



RHEEM CONTINUOUS FLOW FLUE DIVERTERS



GAS



6 STAR

1 - 5

PEOPLE

12, 16
or 26
L/MIN

CAPACITY

10
YEAR

HEAT
EXCHANGER
WARRANTY¹



Rheem Flue Diverters give you added flexibility in installation, while enabling compliance with relevant national and local regulations. The flue diverter can be simply fitted to the water heater, even when installed within a recess box.

Note: NSW installations shown, other states and territories may have differing requirements. You should confirm with your local authorities that the installation complies with all regulations applicable in your area.²

Rheem Flue Diverters

Standard Flue Diverter – fits Rheem 12L, 16L or 26L/min Natural Gas models (60 °C or 50°C) only

Extended Flue Diverter – fits Rheem 26L Natural Gas models (60 °C or 50°C) only

- Stainless steel finish
- Left or right handed fitting
- Fixed heat shield for added homeowner safety
- Easily fitted using brackets included
- Rheem Extended flue diverter includes an additional wall bracket for installations where extra support is necessary

Rheem Continuous Flow

- Available in 50°C models for the added safety of a fully-tempered home (without the cost of a tempering valve)³
- 50°C models are adjustable at installation to deliver 50°C at the nearest tap³
- Digital monitor shows set hot water temperature and error codes for easier servicing
- Remote Temperature Controller options for added convenience and safety
- Flamesafe® overheat protection shuts down the water heater should overheating occur
- Recess Box available - to set water heater into the wall. Compatible with flue diverter
- Security mounting bracket available – for added security
- 10 Year Heat Exchanger Warranty¹
- Technical support via Rheem's national service network



COMES ON STEADY, HOT AND STRONG

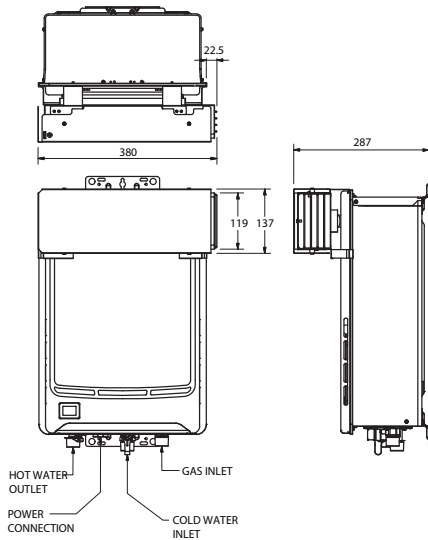
INSTALL A



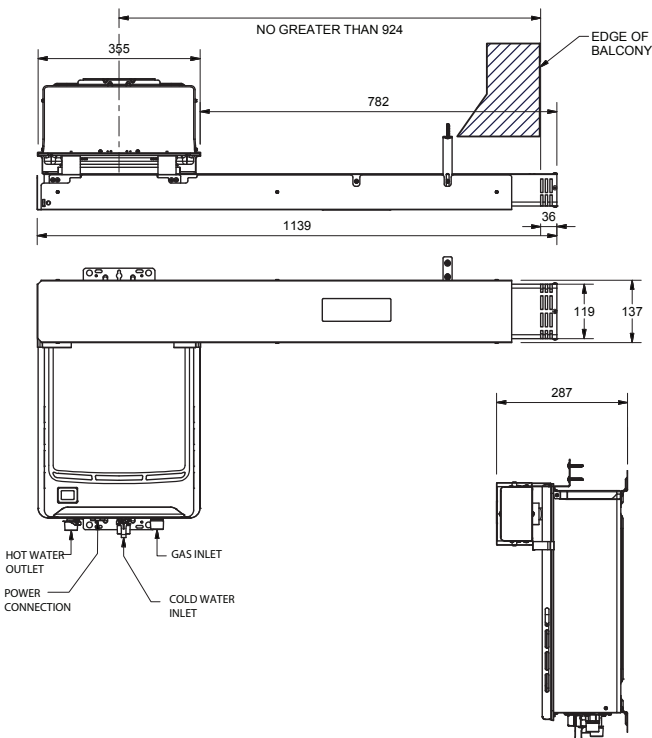


RHEEM CONTINUOUS FLOW FLUE DIVERTERS

Rheem Standard Flue Diverter



Rheem Extended Flue Diverter



SPECIFICATION

Model Number	Rheem 12	Rheem Metro 16	Rheem Metro Max 26
Pre-set Temperature 50°C	876812NF	876T16NF	876T26NF
Pre-set Temperature 60°C	874812NF	874T16NF	874T26NF
Number of People	1 – 5		
Gas Type	Natural Gas only		
Gas Energy Rating	Stars	6.0	
Flow Rate @ 25°C Rise	L/min	12/16/26	
Min. Operating Flow Rate	L/min	2.0	
Nominal Gas Consumption	MJ/hr	94/126/199	
Dimensions			
Height A	mm	520	
Width B	mm	355	
Depth C	mm	187	
Depth – from wall to Hot Water Outlet	mm	87	
Depth – from wall to Cold Water Inlet	mm	68	
Depth – from wall to Gas Inlet	mm	77	
Weight (empty)	kg	16	
Max. Water Supply Pressure	kPa	1000	
Min. Water Supply Pressure	kPa	120	
Cold Water Connection		R ¾	
Hot Water Connection		R ¾	
Gas Connection		R ¾	
Accessories			
Pipe Cover		299426	
Recess Box		299842	
Wall Mount Security Kit		299868	
Standard Flue Diverter (12/16/26L)		299287	
Extended Flue Diverter (26L only)		299285	

¹ Continuous Flow Warranty Conditions:

10 Years parts and 3 Years labour on Heat Exchanger, 3 Years parts & labour on other components, when installed in a domestic dwelling. For all other installations, the warranty period is 1 Year parts and labour on Heat Exchanger and other components. Conditions apply. See the Rheem warranty set out in the Owner's Guide & Installation Instructions or view at www.rheem.com.au/warranty.

² Refer to your State or Territory gazetted regulation revision of AS/NZS 5601-XXXX to ensure installation compliance.

³ 50°C factory pre-set models supply hot water at a maximum 50°C to all outlets in accordance with AS 3498. Some applications may require tempering, refer to AS/NZS 3500.4. 60°C and higher temperature models must have a tempering valve installed in accordance with AS/NZS 3500.4.

Information current as at April 2018. Materials and data are subject to change without notice.

® Registered Trademark of Rheem Australia Pty Ltd.

™ Trademark of SAI Global.



Rheem Australia Pty Ltd.

1 Alan Street, Rydalmere, New South Wales 2116, Australia
PO Box 7508, Silverwater, New South Wales 2128, Australia.

