

Owners Guide and Installation Instructions



YF Series Commercial Water to Water Heat Pump Water Heater



Install a Rheem



**WARNING: THIS WATER HEATER CONTAINS LOW BURNING VELOCITY
MATERIAL**



WaterMark

WMKA21549

*This water heater must be installed and serviced by a qualified person.
Please leave this guide with a responsible officer.*

An electronic copy of these Owner's Guide and Installation Instructions can be downloaded from rheem.com.au and rheem.co.nz.

PATENTS

This water heater may be protected by one or more patents or registered designs.

TRADEMARKS

® Registered trademark of Rheem Australia Pty Ltd.

™ Trademark of Rheem Australia Pty Ltd.

NOTE: Every care has been taken to ensure accuracy in preparation of this publication. No liability can be accepted for any consequences, which may arise as a result of its application.

CONTENTS

RESPONSIBLE OFFICER

This booklet contains important information about your new water heater, including terms of the Rheem warranty.

We recommend you read pages 8 to 27,
and the terms of the Rheem warranty on pages 4 to 7.

The other pages are intended for the installer but may be of interest.

Contents	3
Rheem Heat Pump Water Heater Warranty - ANZ Only -	4
About Your Water Heater	12
How Your Water Heater Works	16
Maintenance Requirements	20
Water Supplies	22
Save A Service Call	24
Installation	28
Heat Pump And Tank Assembly	42
Manifold Installations	49
Connections – Plumbing	52
Connections – Electrical	54
Commissioning	73
Draining The Water Heater	91
Trouble Shooting	92

RHEEM AUSTRALIA PTY LTD, A.B.N. 21 098 823 511

www.rheem.com.au, www.rheem.co.nz

For Service Telephone 131 031 AUSTRALIA or 0800 657 335 NEW ZEALAND

RHEEM HEAT PUMP WATER HEATER WARRANTY - AUSTRALIA & NEW ZEALAND ONLY –

HEAT PUMP WATER HEATER MODELS 95501600, 9550160V, 95503200, 9550320V,

1. THE RHEEM WARRANTY – GENERAL

- 1.1 This warranty is given in Australia by Rheem Australia Pty Limited ABN 21 098 823 511 of 1 Alan Street, Rydalmere New South Wales, and in New Zealand by Rheem New Zealand Limited of 475 Rosebank Road Avondale Auckland 1026.
- 1.2 Rheem offer a trained and qualified national service network who will repair or replace components at the address of the water heater subject to the terms of the Rheem warranty. Rheem Service, in addition can provide preventative maintenance and advice on the operation of your water heater. The Rheem Service contact number in Australia is 131031, with Contact Centre personnel available 24 hours, 7 days a week to take your call and if necessary to arrange a service call for during normal working hours Monday to Friday (hours subject to change) or in New Zealand on 0800 657 335.
- 1.3 For details about this warranty, you can contact us in Australia on 131031 or by email at warrantyenquiry@rheem.com.au (not for service bookings), or in New Zealand on 0800 657 335 or by email at rheem@rheem.co.nz (not for service bookings).
- 1.4 The terms of this warranty and what is covered by it are set out in sections 2 and 3 and apply to water heaters manufactured from the 1st September 2023.
- 1.5 If a subsequent version of this warranty is published, the terms of that warranty and what is covered by it will apply to water heaters manufactured after the date specified in the subsequent version.

2. TERMS OF THE RHEEM WARRANTY AND EXCLUSIONS TO IT

- 2.1 The decision of whether to repair or replace a faulty component is at Rheem's sole discretion.
- 2.2 If you require a call out and we find that the fault is not covered by the Rheem warranty, you are responsible for our standard call out charge. If you wish to have the relevant component repaired or replaced by Rheem, that service will be at your cost.
- 2.3 Where a failed component or cylinder is replaced under this warranty, the balance of the original warranty period will remain effective. The replacement does not carry a new Rheem warranty.
- 2.4 Where the water heater is installed outside the boundaries of a metropolitan area as defined by Rheem or further than 25 km from either a regional Rheem branch office or an Accredited Rheem Service Agent's / Centre's office, the cost of transport, insurance and travelling between the nearest branch office or Rheem Accredited Service Agent's / Centre's office and the installed site shall be the owner's responsibility.

- 2.5 Where the water heater is installed in a position that does not allow safe or ready access, the cost of that access, including the cost of additional materials handling and/or safety equipment, shall be the owner's responsibility. In other words, the cost of dismantling or removing cupboards, doors or walls and the cost of any special equipment to bring the water heater to floor or ground level or to a serviceable position is not covered by this warranty.
- 2.6 This warranty only applies to the original and genuine Rheem water heater in its original installed location and any genuine Rheem replacement parts.
- 2.7 The Rheem warranty does not cover faults that are a result of:
- a) Accidental damage to the water heater or any component (for example: (i) Acts of God such as floods, storms, fires, lightning strikes and the like; and (ii) third party acts or omissions).
 - b) Misuse or abnormal use of the water heater.
 - c) Installation not in accordance with the Owner's Guide and Installation Instructions or with relevant statutory and local requirements in the State or Territory in which the water heater is installed.
 - d) Connection at any time to a water supply that does not comply with the water supply guidelines as outlined in the Owner's Guide and Installation Instructions.
 - e) Repairs, attempts to repair or modifications to the water heater by a person other than Rheem Service or a Rheem Accredited Service Agent / Centre.
 - f) Faulty plumbing or faulty power supply.
 - g) Failure to maintain the water heater in accordance with the Owner's Guide and Installation Instructions.
 - h) Transport damage.
 - i) Fair wear and tear from adverse conditions (for example, corrosion).
 - j) Cosmetic defects.
- 2.8 Subject to any statutory provisions to the contrary, this warranty excludes any and all claims for damage to furniture, carpet, walls, foundations or any other consequential loss either directly or indirectly due to leakage from the water heater, or due to leakage from fittings and/ or pipe work of metal, plastic or other materials caused by water temperature, workmanship or other modes of failure.
- 2.9 If the water heater is not sized to supply the hot water demand in accordance with the guidelines in the Rheem water heater literature, any resultant fault will not be covered by the Rheem warranty.
- 2.10 In New Zealand this warranty excludes to the extent permissible all implied warranties set out in the Sale of Goods Act 1908 (New Zealand) and all guarantees set out in the Consumers Guarantees Act 1993 (New Zealand) to the extent that the goods are acquired

for the purpose of resupply in trade consumption in the course of a process of production or manufacture or repairing or treating in trade other goods or fixtures on land.

3. WHAT IS COVERED BY THE RHEEM WARRANTY FOR THE WATER HEATERS DETAILED IN THIS DOCUMENT

- 3.1 Rheem will repair or replace a faulty component of your water heater if it fails to operate in accordance with its specifications as follows:

What components are covered	The period in which the fault must appear in order to be covered	What coverage you receive
All components	Year 1	Repair and/or replacement of the faulty component, free of charge, including labour.
Sealed System* components	Year 2	Repair and/or replacement of the faulty component, free of charge, including labour.

* The Sealed System includes components that carry refrigerant only, e.g. Compressor, Condenser, TX Valve, EE Valve, Receiver / Drier, Evaporator and associated pipe work.

4. ENTITLEMENT TO MAKE A CLAIM UNDER THIS WARRANTY

- 4.1 To be entitled to make a claim under this warranty you need to:
- a) Be the owner of the water heater or have consent of the owner to act on their behalf.
 - b) Contact Rheem Service without undue delay after detection of the defect and, in any event, within the applicable warranty period.
- 4.2 You are **not** entitled to make a claim under this warranty if your water heater:
- a) Does not have its original serial numbers or rating labels.
 - b) Is not installed in Australia or New Zealand.

5. HOW TO MAKE A CLAIM UNDER THIS WARRANTY

- 5.1 If you wish to make a claim under this warranty, you need to:
- a) Contact Rheem on 131031 in Australia or 0800 657 335 in New Zealand and provide owner's details, address of the water heater, a contact number and date of installation of the water heater or if that's unavailable, the date of manufacture and serial number (from the rating label on the water heater).
 - b) Rheem will arrange for the water heater to be tested and assessed on-site.
 - c) If Rheem determines that you have a valid warranty claim, Rheem will repair or replace the water heater in accordance with this warranty.
- 5.2 Any expenses incurred in the making of a claim under this warranty will be borne by you.

6. THE AUSTRALIAN CONSUMER LAW

- 6.1 Our goods come with guarantees that cannot be excluded under the Australian Consumer Law. You are entitled to a replacement or refund for a major failure and for compensation for any other reasonably foreseeable loss or damage. You are also entitled to have the goods repaired or replaced if the goods fail to be of acceptable quality and the failure does not amount to a major failure.
- 6.2 The Rheem warranty (set out above) is in addition to any rights and remedies that you may have under the Australian Consumer Law.

7. THE CONSUMER GUARANTEES ACT 1993 (NEW ZEALAND)

- 7.1 Our goods come with guarantees that cannot be excluded under the Consumer Guarantees Act 1993 (New Zealand). If the goods fail to comply with the applicable guarantees set out under the Consumer Guarantees Act 1993 (New Zealand) being the guarantee as to acceptable quality, the guarantee as to correspondence with description or the guarantee as to repair and parts, or if the goods fail to comply with any express guarantee given by Rheem, then you are entitled to a replacement or refund and for compensation for any other reasonably foreseeable loss or damage.
- 7.2 The Rheem warranty (set out above) is in addition to any rights and remedies that you may have under the Consumer Guarantees Act 1993 (New Zealand).

SAFETY, WARNINGS, INSTALLATION NOTES

It is important you read the following safety and warnings information.

SAFETY AND WARNINGS

- This water heater is only intended to be operated by persons who have the experience or the knowledge and the capabilities to do so.
- This water heater is not intended to be operated by persons with reduced physical, sensory or mental capabilities i.e. the infirm, or by children. Children should be supervised to ensure they do not interfere with the water heater.
- If the electrical conduit to the water heater is damaged, it must be replaced by a qualified person in order to avoid a hazard. Phone Rheem Service or their nearest Accredited Service Agent / Centre to arrange for an inspection.
- This water heater uses 415V / 240 V AC electrical power for operation of the control systems and other electrically operated components. The removal of the access cover(s) will expose 415V / 240 V wiring. They must only be removed by a qualified person.
- This water heater contains low burning velocity material.
- This water heater is supplied with built in Rheem IQ Controller which controls low and high pressure switches, low temperature cut off safety switch and flow switch.

Additionally, the compressor is fitted with thermal overload protection, the condenser heat exchanger is fitted with a pressure relief valve and the storage tanks are supplied with a combination temperature pressure relief valve. These devices must not be tampered with or removed. The water heater must not be operated unless each of these devices is fitted and is in working order.

- The water heater will operate until a water temperature of 60°C to 65°C is reached, depending upon the setting of the controller.

Refer to [“How Hot Should The Water Be?”](#) on page 12.

- The lever on the temperature pressure relief valve on the storage tank and expansion control valve (if fitted) requires to be operated every six (6) months to clear any deposits and to ensure the valve and its drain line are not blocked.

Refer to [“Relief Valves”](#) on page 9 and [“Minor Maintenance Every Six Months”](#) on page 21.

- For continued safety of this water heater it must be installed, operated and maintained in accordance with the Owner's Guide and Installation Instructions.
- Servicing of a water heater must only be carried out by qualified personnel. Phone Rheem Service or their nearest Accredited Service Agent / Centre.
- Only a person qualified to install or service a water heater can drain the water heater, if this is required.
- Do not modify this water heater.

RELIEF VALVES

Temperature Pressure Relief Valve

The storage tank connected to this water heater incorporates a temperature pressure relief valve located near the top of the storage tank. This valve is essential for the water heater's safe operation.

It is possible for the valve to discharge a quantity of water through the drain line during each heating period. This quantity should be equal to approximately 1/50 of the hot water used, as water expands by this volume when heated.


Expansion Control Valve

In many areas, including South Australia, Western Australia, New Zealand and scaling water areas, it is mandatory an expansion control valve is fitted to the cold water line to the water heater.

The expansion control valve will discharge the quantity of water from its drain line during the heating period instead of the temperature pressure relief valve as it has a lower pressure rating.

Valve Operation

Continuous leakage of water from either valve and its drain line may indicate a problem with the water heater. Refer to "[Temperature Pressure Relief Valve or Expansion Control Valve Running](#)" on page 26.

 **Warning:** Never block the outlet of either valve or their drain lines for any reason. A relief valve drain must be left open to atmosphere and be installed in a continuously downward direction.

In locations where water pipes are prone to freezing, the relief valve drain line must be insulated and not exceed 300 mm in length before discharging into a tundish through an air gap.

Operate the easing lever on the temperature pressure relief valve and expansion control valve once every six (6) months to clear any deposits and ensure the valve and its drain line are not blocked. **It is very important the lever is raised**

and lowered gently. Refer to “[Minor Maintenance Every Six Months](#)” on page 21.

⚠ Warning: Water discharged from the temperature pressure relief valve drain line will be hot. Exercise care to avoid any splashing of water by standing clear of the drain line’s point of discharge when operating either valve’s easing lever.

⚠ DANGER: Failure to operate the easing lever on the relief valve once every six (6) months may result in the storage tank cylinder failing, or under certain circumstances, exploding.

If water does not flow freely from the drain line when the lever is lifted, then the water heater must be checked. Phone Rheem Service or their nearest Accredited Service Agent / Centre to arrange for an inspection.

The temperature pressure relief valve should be replaced at intervals not exceeding five (5) years and the expansion control valve should be checked for performance or replaced at intervals not exceeding five (5) years. The checking of the valves performance or replacement should occur more frequently in areas where there is a high incidence of water deposits. Refer to “[Water Supplies](#)” on page 22.

INSTALLATION NOTES

This water heater must be installed:

- by a qualified person,
- in accordance with the installation instructions,
- in compliance with the Plumbing Code of Australia (PCA) and Plumbing Standard AS/NZS 3500.4,
 - This water heater is suitable for either indoor or outdoor installation.
 - This water heater is intended to be permanently connected to the water mains and not connected by a hose-set. A braided flexible hose or semi-flexible connector may be used for connection to the water heater, where permitted by AS/NZS 3500.4.
- in compliance with the Australian / New Zealand Wiring Rules AS/NZS 3000,
 - An isolation switch must be installed at the switchboard in the electrical circuit to the water heater, and also adjacent to the water heater, in accordance with the Wiring Rules, so the water heater can be switched off. Refer to “[Connections – Electrical](#)” on page 54.

- The power supply wires are to be directly connected to the terminal block, with no excess wire loops inside the front cover. The temperature rating of the power supply wires insulation must suit this application.
- In compliance with AS/NZS 60335.2.40-2019 and/or ISO 5149.3-2014 with regards to A2L material.
- in compliance with all local codes and regulatory authority requirements.
- in New Zealand also conforming to Clauses G12 and H1 of the New Zealand Building Code.

Installation and commissioning requirements and details for the installing plumber and licensed electrical worker are contained on [pages 28 to 73](#).

Mains pressure water supply

The water heater is designed to operate at mains pressure by connecting directly to the mains water supply.

Refer to the table on **page 32** for relief valve operating pressures and maximum supply pressures.

ABOUT YOUR WATER HEATER

WATER HEATER APPLICATION

This water heater is designed for the purpose of heating potable water. Its use in an application other than this may shorten its life.

MODEL TYPE

Congratulations for choosing a Rheem® commercial water to water (W2W) heat pump water heater. The Rheem W2W heat pump water heater is designed for outdoor or indoor installation.

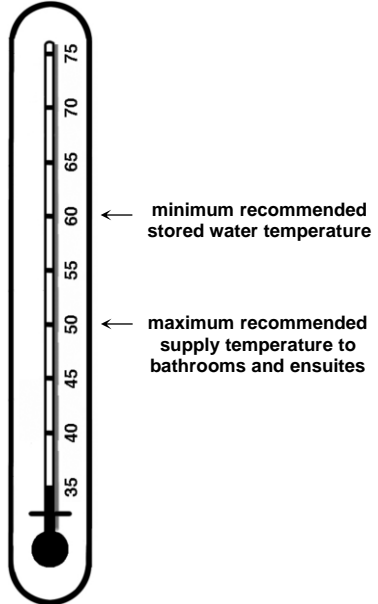
HOW HOT SHOULD THE WATER BE?

The heat pump (compressor, evaporator and condenser) will operate until a water temperature of up to set point is reached.

To meet the requirements of the National Plumbing Standard (AS/NZS3500.4) the temperature of the stored water must not be below 60°C.

The factory setting is 65°C.

Note: Australian Standard AS 3498 and New Zealand Building Code Clause G12 require that a water heater provides the means to inhibit the growth of Legionella bacteria in potable water. This water heater can satisfy these AS 3498 and Clause G12 requirements provided it is energised and the thermostat setting is 60°C or higher, including when it is used as an in-series booster water heater for a solar water heater.



HOTTER WATER INCREASES THE RISK OF SCALD INJURY

This water heater can deliver water at temperatures which can cause scalding.

Check the water temperature before use, such as when entering a shower or filling a bath or basin, to ensure it is suitable for the application and will not cause scald injury.

We recommend and it may also be required by regulations that an approved temperature limiting device be fitted into the hot water pipe work to the bathroom and ensuite when this water heater is installed. The maximum permitted by the Plumbing Code of Australia and New Zealand Building Code Clause G12 to

ABOUT YOUR WATER HEATER

these areas. The risk of scald injury will be reduced and still allow hotter water to the kitchen, laundry and other areas requiring sanitising temperatures.

TEMPERATURE ADJUSTMENT

Set Point Quick Setting

Press '**prg**' from the main display screen and the Set Point page will appear. Cursor will be on the set temperature. Pressing the up and down keys will adjust the setting in 0.1 increments. Hold down for rapid change. Press '**Enter**' to confirm change. Press '**esc**' to return to the main display screen. Refer to **page 66** for more information.

We advise the thermostats are adjusted to the lowest temperature setting that meets your needs, especially if there are young children or elderly people in the premises. Refer to "[Hotter Water Increases the Risk of Scald Injury](#)" on page 12.

PRECAUTIONS

Under certain installation conditions where damage to property can occur in the event of the water heater leaking AS/NZS 3500.4 requires the water heater be installed in a safe tray. Construction, installation and draining of a safe tray must comply with AS/NZS 3500.4 and all local codes and regulatory authority requirements. In New Zealand the safe tray must also meet the requirements of Clause G12 of the New Zealand Building Code. AS/NZS 3500.4 and the NZBC also have particular requirements when a safe tray must be installed.

Alternatively, where additional leak protection is required for installations not defined by AS/NZS 3500.4, a suitable bund may be constructed to surround the water heater in lieu of using a safe tray.

The water heater must be maintained in accordance with the Owner's Guide and Installation Instructions. Refer to "[Maintenance Requirements](#)" on page 20.

If this water heater is to be used where an uninterrupted hot water supply is necessary for your application or business you should ensure that you have back-up redundancy within the hot water system design. This should ensure the continuity of hot water supply in the event that this water heater were to become inoperable for any reason. We recommend you seek advice from your plumber or specifier about your needs and building back-up redundancy into your hot water supply system.

ABOUT YOUR WATER HEATER

Do not use **aerosols, stain removers and chemicals** near the water heater whilst it is working. Gases from some aerosol sprays, stain removers and chemicals are corrosive to the materials used in the heat pump system.

Do not store swimming pool chemicals, household or industrial cleaners, etc., near the water heater.

TO TURN OFF THE WATER HEATER

- Switch off the electrical supply at the isolating switch to the water heater.
- Close the isolation valves at the inlet and outlet of the water heater.

TO TURN ON THE WATER HEATER

- First, ensure the water is connected to storage tanks, the system is filled with water and all valves between the tanks and the water heater are open.
- Open the cold side and hot side water isolation valve fully at the inlets to the water heater.
- Switch on the electrical supply at the isolating switch to the water heater.

Note: The water heater may not turn on immediately when it is first switched on, if it is switched on within 20 minutes to 2 hours of it having been switched off at the isolating switch, or the heat pump has just completed a heating cycle. The water heater will wait until the conditions for start-up are favourable in order to protect the compressor from damage. This may take up to 20 minutes to 2 hours.

VICTORIAN CUSTOMERS

Notice to Victorian Customers from the Victorian Building Authority. This water heater must be installed by a licensed person as required by the Victorian Building Act 1993.

Only a licensed person will give you a Compliance Certificate, showing that the work complies with all the relevant Standards. Only a licensed person will have insurance protecting their workmanship for 6 years. Make sure you use a licensed person to install this water heater and ask for your Compliance Certificate.

ABOUT YOUR WATER HEATER

DOES THE WATER CHEMISTRY AFFECT THE WATER HEATER?

The water heater is suitable for most public water supplies, however some water chemistries may have detrimental effects on the water heater, its components and fittings. **Refer to “Water Supplies” on page 22**. If you are not sure, have your water chemistry checked against the conditions described on **pages 22 to 23**.

HOW LONG WILL THE WATER HEATER LAST?

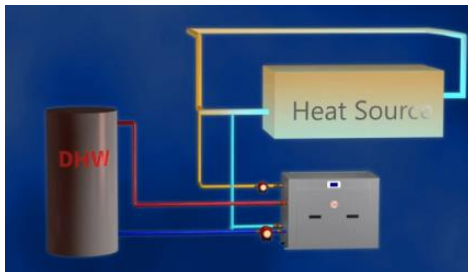
Your water heater is supported by a manufacturer’s warranty (refer to **page 4**). There are a number of factors that will affect the length of service the water heater will provide. These include but are not limited to the water chemistry, the water pressure, temperature (inlet and outlet) and the water usage pattern.

ENVIRONMENT

At the end of the service life of the heat pump water heater and prior to the water heater being disposed of, a person qualified to work with refrigerants must recover the refrigerant from within the sealed system. The refrigerant must not be vented to atmosphere. Phone your nearest Rheem Service Department or Accredited Service Agent (or Service Centre in NZ) to arrange for an inspection.

HOW YOUR WATER HEATER WORKS

The Rheem commercial water to water heat pump is an instantaneous type and does not have an integral storage cylinder. The unit is designed to be installed indoors or outdoors. The water heater's evaporator absorbs heat from the returning chilled water circuit or condenser loop and transfers this heat into the potable water. A circulator transfers the heated water to a bank of storage tanks. By taking heat from the chilled water circuit, the heat pump reduces load on chiller as colder water returns to the building chiller circuit. The heat pump produces a sound level of up to 62 dBA (measured at 3 metres) when it is operating.



When hot water is drawn off and cold water enters the storage tanks, a remote thermostat activates the compressor and circulating pumps of the water heater. The chiller return water (building heat) is drawn in through the cold side inlet and then through the evaporator (single wall heat exchanger), where heat is transferred to a refrigerant fluid. The fluid is compressed and passes to the condenser (double wall heat exchanger) where heat is transferred into the potable water. The pump circulates water from the bottom of the storage tanks through the heat exchanger and the heated water is circulated back into the storage tanks. This process continues until the water in the storage tanks reaches the set temperature.

The heat pump is designed to operate most efficiently at cold side temperatures between a minimum of 12°C and maximum of 35°C. Operation with higher cold side inlet temperature is possible, however must be engineered in consultation with Rheem. The efficiency of the water heater is relative to the building chilled water circuit temperature and the incoming hot side (potable) water temperature.

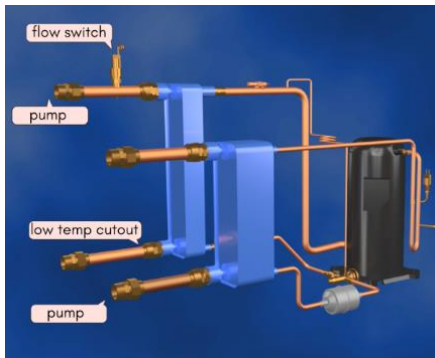
Automatic safety controls are fitted to the water heater to provide safe and efficient operation.

FREEZE PROTECTION

Ice may begin to form in the evaporator when the cold side outlet temperature falls below 4°C or the flow rate of cold side water is excessively low or the pump on the cold side fails, and this may damage the evaporator heat exchanger.

HOW YOUR WATER HEATER WORKS

To prevent this damage, the pumps for both sides of the water heater are sized and supplied by Rheem and the heat pump is supplied with a flow switch sensor and a low temperature cut out switch. The heat pump will terminate its operation if poor flow rate is sensed or the cold side outlet temperature or hot side outlet temperature falls below 5°C.



AUXILIARY BOOST OPERATION

There are two types of auxiliary boost operation, which operate as follows:

ANTIFREEZE AUXILIARY BOOST OPERATION

When freeze protection activates, the heat pump will cease operating. It is then possible to activate auxiliary heating mode.

In auxiliary heating mode the controller deactivates the heat pump and switches to an auxiliary gas or electric water heater, if installed and activated in the menu. A pump circulates water from the storage tanks through the auxiliary water heater until the set temperature is reached.

When the cold side outlet temperature and hot side outlet temperature rises to 10°C, the auxiliary heating mode is deactivated and the heat pump starts operating again.

For installations using multiple heat pumps in a master/slave configuration, activation of antifreeze auxiliary boost operation on any heat pump activates the auxiliary boost on all LAN connected heat pumps.

OPERATION IN FAULT MODE

If fitted, the auxiliary booster will operate instead of the heat pump if the heat pump is in fault.

For multiple heat pump (Master/Slave) configuration, the auxiliary booster will operate instead of the heat pumps if fifty percent (50%) or more heat pumps are in fault.

The auxiliary boost will operate until the set temperature is reached. The auxiliary boost should be set to 65°C.

HOW YOUR WATER HEATER WORKS

⚠ Warning: Rheem will not be responsible for higher utility bills due to excessive use of auxiliary boost heater. It is the customers' responsibility to monitor the system regularly for its correct operation. Rheem recommends monitoring via BMS (modules supplied separately).

MAINS PRESSURE

The water heater is designed to operate at mains pressure by connecting directly to the mains water supply. If the mains supply pressure in your area exceeds that shown on **page 32**, a pressure limiting valve must be fitted.

THERMAL CUT OUT

The refrigeration circuit is protected by thermal sensors. These will activate a thermal cut out in the event of excessive heat in the refrigeration system.

If the thermal cut out has activated, the heat pump will not operate for a period of 20 minutes to 2 hours. The water heater will make two more attempts to start up. If the thermal cut out is tripped again after the third attempt, the system will enter lock out and the alarm contacts will close. If connected to a BMS, this will alert the user that the unit is not operating.

The lockout condition can be manually reset by switching the power to the water heater off and then on.

CONTROL FUNCTIONALITY

A timer can be set through the heat pump control panel to limit the hours of operation of the water heater (e.g. to reduce noise at night).

The operation of the heat pump can also be controlled by setting up tariff option on the control panel to manage operating costs.

Note: depending on the booster configuration there may be insufficient stored energy available for the next peak period if the system is not up to temperature.

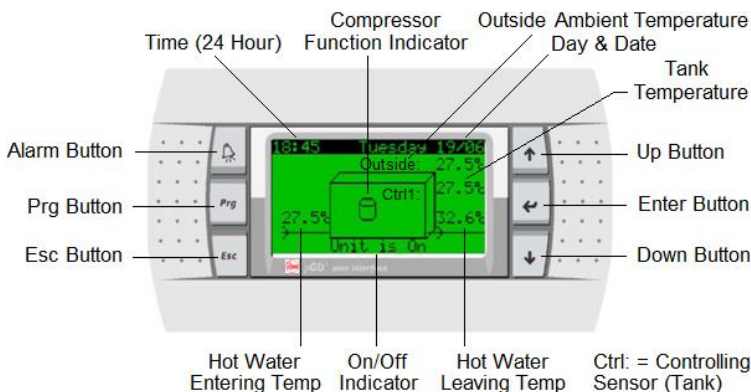
HOW YOUR WATER HEATER WORKS

SUPERIOR MONITORING

The W2W Heat Pump System is supplied with 11 sensors:

1. Tank temperature sensor
2. Building flow temperature sensor
3. Chilled water inlet temperature sensor
4. Chilled water outlet temperature sensor
5. Hot water inlet temperature sensor
6. Hot water outlet temperature sensor
7. Refrigerant suction side temperature (superheat)
8. Suction pressure transducer
9. Discharge pressure transducer
10. Cold water flow switch
11. Cold water differential pressure switch

The output of these sensors are displayed on the user friendly control panel to ensure correct system operation.



The system can be connected to BMS. Modbus RS485 is provisioned on the controller for a single 16kW heat pump. Modbus RS485, BACnet MS-TP or BACnet TCP/IP Ethernet interface cards, supplied by Rheem, are required for any other configuration. Contact Rheem for further information on BMS.

MAINTENANCE REQUIREMENTS



WARNING: THIS WATER HEATER CONTAINS LOW BURNING VELOCITY MATERIAL

MINOR MAINTENANCE EVERY SIX MONTHS

It is recommended minor maintenance be performed every six (6) months. Minor maintenance can be performed by a responsible officer.

The minor maintenance includes:

- Operate the easing lever on the temperature pressure relief valve. **It is very important the lever is raised and lowered gently.** Refer to “Relief Valves” on page 9.

⚠ Warning: Water discharged from the temperature pressure relief valve drain line will be hot. Exercise care to avoid any splashing of water by standing clear of the drain line’s point of discharge when operating the valve’s easing lever.

- Operate the easing lever on the expansion control valve (if fitted). **It is very important the lever is raised and lowered gently.** Refer to “Relief Valves” on page 9.
- Check the condensate drain and safe tray drain (if one is installed) is not blocked.

ANNUAL SERVICE

It is recommended the commercial heat pump be serviced annually, to retain optimum performance. Servicing must be performed by a suitably qualified person.

The annual service includes:

1. Check the sensors are fully installed into thermal wells.
2. Check for leaks at all fittings.
3. Check for signs of excessive corrosion on storage tank(s) jacket(s) and heat pump casing.
4. Check for sludge build up and if necessary drain and flush storage tank(s).
5. Clear hot water pump impellor and ensure free rotation.
6. Check condensate drain for blockages – clear if necessary.
7. Clean blockages and debris from evaporator fins, fan blades, grilles and louvres.

8. Isolate power to heat pump and check all electrical connections for signs of overheating due to poor connection.
9. Check for vibration or excessive noise from compressor and hot and cold water pumps.
10. Check refrigerant pressures and adjust refrigerant charge if required.
11. Visually check system for any potential problems.
12. Confirm correct system operation.
13. Operate temperature and pressure relief valve and expansion control valve. Refer to **page 9**.

FIVE YEAR SERVICE

1. As per annual service.
2. Inspect and if required, replace storage tank(s) anode(s). If the anode is not replaced, it should be replaced within three years of this service.
3. Check operation of defrost solenoid valve by manually operating the valve.
4. Replace temperature and pressure relief valve or expansion control valve.

Refer to Service manual for more information.

WATER SUPPLIES

This water heater must be installed in accordance with this advice to be covered by the Rheem warranty.

This water heater is manufactured to suit the water conditions of most public reticulated water supplies. However, there are some known water chemistries which can have detrimental effects on the water heater and its operation and / or life expectancy. If you are unsure of your water chemistry, you may be able to obtain information from your local water supply authority. This water heater should only be connected to a water supply which complies with these guidelines for the Rheem's warranty to apply.

CHANGE OF WATER SUPPLY

The changing or alternating from one water supply to another can have a detrimental effect on the operation and / or life expectation of a number of components in this water heater.

Where there is a changeover from one water supply to another, e.g. a rainwater tank supply, bore water supply, desalinated water supply, public reticulated water supply or water brought in from another supply, then water chemistry information should be sought from the supplier or it should be tested to ensure the water supply meets the requirements given in these guidelines for the Rheem warranty to apply.

SATURATION INDEX

The saturation index (SI) is used as a measure of the water's corrosive or scaling properties.

Where the saturation index is less than -1.0 , the water is very corrosive and the Rheem warranty does not apply to the water heater. In a corrosive water supply, the water can attack copper parts and cause them to fail.

Where the saturation index exceeds $+0.40$, the water is very scaling and an expansion control valve* must be fitted on the cold water line after the non-return valve. The Rheem warranty does not apply to the water heater.

Water which is scaling may be treated with a water softening device to reduce the saturation index of the water.

* Refer to the cold water connection detail on [page 52](#).

CHLORIDE AND PH

In a high chloride water supply, the water can corrode stainless steel parts and cause them to fail. Where the chloride level exceeds 250 mg/L the Rheem warranty does not apply to the water heater if fitted with a brazed plate stainless steel heat exchanger.

WATER SUPPLIES

Where the pH is less than 6.0 the Rheem warranty does not apply to the water heater. pH is a measure of whether the water is alkaline or acid. In an acidic water supply, the water can attack stainless steel parts and cause them to fail.

Water with a pH less than 6.0 may be treated to raise the pH. The water supply from a rainwater tank in a metropolitan area is likely to be corrosive due to the dissolution of atmospheric contaminants.

Where the Chloride and/or pH exceed the warranty limits for stainless steel, an optional copper tube in tube condenser heat exchanger can be specified, subject to the Saturation Index being within warranty limits.

SUMMARY OF WATER CHEMISTRY ADVICE AFFECTING THE RHEEM WARRANTY

The water heater is not suitable for certain water chemistries. Those chemistries are listed below. If the water heater is connected at any time to a water supply with the following water chemistry, Rheem's warranty will not cover any resultant faults:

Water Chemistry

Saturation Index (SI) < -1.0

Saturation Index (SI) > +0.4

Chloride > 250 mg/L

pH < 6.0

Component

water heater (copper heat exchanger and parts)

water heater (expansion control valve)

water heater (stainless steel heat exchanger)

water heater (stainless steel heat exchanger)

SAVE A SERVICE CALL

Check the items below before making a service call. You will be charged for attending to any condition or fault that is not related to manufacture or failure of a part.

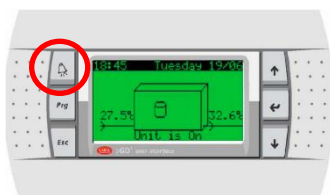
NOT ENOUGH HOT WATER (OR NO HOT WATER)

- **Is the electricity switched on?**

Inspect the isolating switch marked “HOT WATER” or “WATER HEATER” at the switchboard and the isolating switch at the water heater and ensure they are turned on.

Check the circuit breaker marked “HOT WATER” or “WATER HEATER” at the switchboard.

- **Is the alarm light flashing RED on heat pump controller?**



If the alarm light is flashing RED, check the alarm by pressing the alarm button. Phone your nearest Rheem Service Department or Accredited Service Agent (or Service Centre in NZ) to inform about the alarm.

- **Is the timer set?**

If the timer has been set, ensure sufficient time has been allowed to reheat the storage tanks.

- **Are you using more hot water than you think?**

Are outlets (especially the showers) using more hot water than you think? Very often it is not realised the amount of hot water used, particularly when showering. Carefully review the hot water usage. Have your plumber install a flow control valve to each shower outlet to reduce water usage.



- **Heat pump circulator has failed?**

The heat pump will not operate if the heat pump circulator has failed. Refer to “[Heat Pump Is Not Operating](#)” on [page 25](#). Phone your nearest Rheem Service Department or Accredited Service Agent to arrange for an inspection.

- **Water heater size**

Do you have the correct size water heater for your requirements? The sizing guide in the sales literature and on the Rheem website (www.rheem.com.au or www.rheem.co.nz) suggest average sizes that may be needed.

- **Air temperature is cold – defrost mode**

The heat pump will enter a defrost mode when ice is sensed on the evaporator coil. The recovery rate of the heat pump is reduced in due to the lower operating air temperature and heating of water is reduced during the defrost cycle.

WATER TOO HOT

The water heater, during both normal heat pump operation and auxiliary booster operation (optionally activated when the chilled water circuit is off, or heat pump fault), will heat the water to a temperature of 60°C to 65°C. It is recommended to set the auxiliary booster thermostat setting to 65°C.

WATER NOT HOT ENOUGH

You may find that due to heavy hot water usage the water temperature may be lower than normally expected, due to insufficient heating time being allowed. Additional storage or an in series booster may be required to be installed under these circumstances.

HEAT PUMP IS NOT OPERATING

- **When freeze protection is activated– auxiliary boost mode**

If the freeze protection activates, the heat pump will stop operating and the auxiliary water heater, if installed, will operate instead. The total storage tank capacity will be heated to 65°C during these periods. Heating of the water by the heat pump will occur when the freeze protection deactivates.

- **Thermal cut out activated**

Has the thermal cut out for the heat pump compressor activated?

If the thermal cut out has activated, the heat pump will not operate for a period of 20 minutes to 2 hours and display alarm on the control panel. The water heater will make two more attempts to start. If the thermal cut out is tripped again after the third attempt, the system will enter lock out. If connected to a BMS, this will alert the user that the unit is not operating.

To check whether there may be a problem, switch the power to the water heater off and on again at the circuit breaker to the water heater, then open

a hot tap and allow to run for ten to fifteen minutes. The heat pump, if working properly, will activate and continue operating to heat the water. Close the hot tap when the heat pump begins to operate.

However, if the heat pump deactivates within five minutes, there may be a problem. Phone your nearest Rheem Service Department or Accredited Service Agent (or Service Centre in NZ) to arrange for an inspection.

- **Incorrect Phase Rotation**

The phase fail relay will open circuit if the heat pump has been wired with incorrect phase rotation or if a phase has failed. Both green and yellow LEDs on the relay will be illuminated if all phases are available and phase rotation is correct.

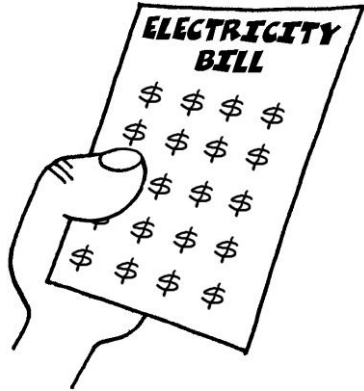
- **Heat pump circulator has failed**

If the heat pump circulator has failed, the heat pump will not operate and may trip on a fault. Phone your nearest Rheem Service Department or Accredited Service Agent (or Service Centre in NZ) to arrange for an inspection.

HIGH ELECTRICITY BILLS

With the installation of your new air sourced heat pump water heater, maximum electrical energy savings can be achieved. Should you at any time, feel your energy account is too high, we suggest you check the following points:

- Is the relief valve in the storage tanks running excessively?
- Are outlets (especially the showers) using more hot water than you think? (Refer to “[Not Enough Hot Water](#)” on [page 24](#)).
- Is there a leaking hot water pipe, dripping hot water tap, etc? Even a small leak will waste a surprising quantity of hot water and energy. Replace faulty tap washers, and have your plumber rectify any leaking pipe work.
- Consider recent changes to your hot water usage pattern and check if there has been any increase in tariffs since your previous account.
- The heat pump water heater operates at its most efficient at higher air temperatures. Prolonged periods of low ambient temperature will decrease the efficiency of the system and increase running costs.



IF YOU HAVE CHECKED ALL THE FOREGOING AND STILL BELIEVE YOU NEED ASSISTANCE, CALL YOUR NEAREST RHEEM SERVICE DEPARTMENT OR ACCREDITED SERVICE AGENT.

INSTALLATION

**THIS WATER HEATER IS FOR INDOOR OR OUTDOOR INSTALLATION,
THIS WATER HEATER IS NOT SUITABLE FOR POOL HEATING.**

INSTALLATION STANDARDS

The water heater must be installed:

- by a qualified person, and
- in accordance with the installation instructions, and
- in compliance with the Plumbing Code of Australia (PCA), Standards AS/NZS 3500.4, AS/NZS 3000, AS/NZS 60335.2.40-2019 and/or ISO 5149.3-2014 and all local codes and regulatory authority requirements.
- in New Zealand also conforming to Clauses G12 and H1 of the New Zealand Building Code.

⚠ Warning: This water heater may deliver water at high temperature. Refer to the Plumbing Code of Australia, local requirements and these installation instructions to determine if additional delivery temperature control is required. Refer to “[Hot Water Delivery](#)” on page 32.

All packaging materials must be removed from the water heater prior to its installation.

WATER HEATER APPLICATION

This water heater is designed for the purpose of heating potable water. Its use in an application other than this may shorten its life

If this water heater is to be used where an uninterrupted hot water supply is necessary for the application or business, then there should be redundancy within the hot water system design. This should ensure the continuity of hot water supply in the event that this water heater was to become inoperable for any reason. We recommend you provide advice to the system owner about their needs and building backup redundancy into the hot water supply system.

Note: Australian Standard AS 3498 and New Zealand Building Code Clause G12 require that a water heater provides the means to inhibit the growth of Legionella bacteria in potable water. This water heater can satisfy these AS 3498 and Clause G12 requirements provided it is energised and the thermostat setting is 60°C or higher, including when it is used as an in-series booster water heater for a solar water heater.

INSTALLATION

COMPONENTS

The heat pump water heater system is modular and comprises three main components: the heat pump water heater, storage tanks and primary circulators. An auxiliary booster and/or circulator may also be employed as part of the system. The water heater must not be operated until all components are assembled.

Do not tilt the heat pump more than 45° from the vertical. This will unsettle the refrigerant gas and compressor lubricating oil. If the heat pump has been tilted more than 45° from the vertical during handling, it will need one hour to settle before the power to the water heater can be switched on, otherwise damage to the compressor may result.

If the heat pump is tilted whilst conveying it on stairs, the compressor must be braced adequately to prevent undue strain being applied to the piping and feet.

INDOOR INSTALLATION

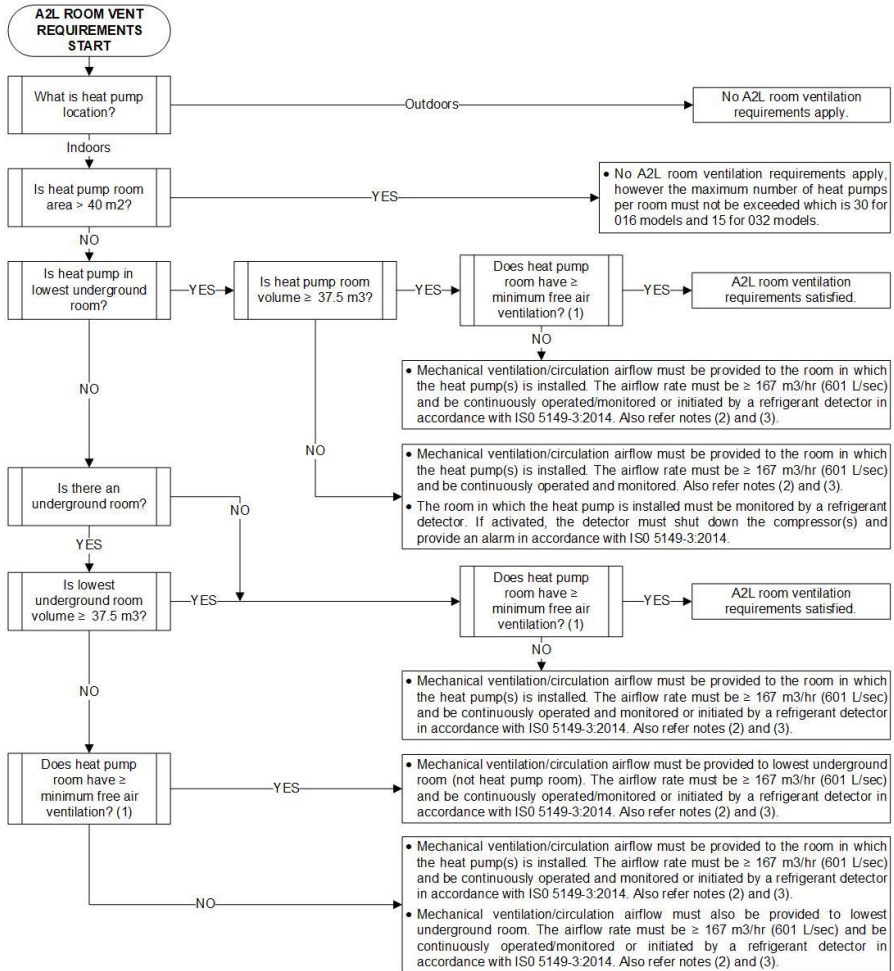
This heat pump uses R1234yf which has a global warming potential of <1. It is an A2L refrigerant, classified as mildly flammable with low burning velocity material.

The flow chart on **page 30** is provided as a guidance as they apply to this water heater in accordance with AS/NZS 60335.2.40-2019 and/or ISO 5149.3-2014, and as such cannot cover all requirements of the standards. Room area, volume and ventilation requirements are the limits required to comply with the standards with regard to A2L refrigerants.

In accordance with the standards, the requirements are calculated based on the largest single refrigeration circuit in the building, and not the cumulative refrigerant contained in multiple heat pump circuits.

INSTALLATION

A2L Room Ventilation Requirements



Notes:

(1) Minimum free air ventilation is 0.078 m² (must be 780 mm wide x 200 mm high minimum vent with 50% free air openings) located with the bottom of the vent no higher than 100 mm from the floor, and the top of the vent no higher than 300 mm from the floor. A second opening of 0.039 m² free air ventilation (e.g. 300 mm x 300 mm vent with 50% free air openings) shall be located between 1.5 m and 2.2 m from the floor.

(2) The airflow reaching height shall not exceed 2.2 m (measured from floor to top of ventilation/circulation fan or top of airflow ventilation opening).

(3) If the airflow rate falls below the minimum airflow rate, the compressor(s) must be shut down within 10 seconds and an alarm must be activated to warn the user that the airflow is reduced. This is typically achieved by one of the following methods:

- By a BMS monitoring system connected to the heat pump.
- By a sail or pressure switch connected to an alarm system and the heat pump 'Remote ON/OFF' terminal block (240 VAC input = ON).

INSTALLATION

WATER HEATER LOCATION

All models are designed to be installed outdoors. Indoor installation is allowable if the requirements of the flow chart on **page 30** are met.

The water heater should be installed close to the storage tanks and its position chosen with noise, safety and service in mind.

It is advisable to install the water heater away from bedroom or living room windows as the system can generate a noise of up to 62dBA (at 3 metres from the water heater) whilst operating.

It is recommended the water heater be installed at ground or floor level. Stacked units with base unit at ground or floor level is acceptable from a servicing perspective.

The water heater must stand vertically upright.

Clearance must be allowed for servicing of the water heater. Refer to **page 41** for clearance data. The water heater must be accessible without the use of a ladder or scaffold.

You must be able to read the information on the rating plate. Remember you may have to remove the entire water heater later for servicing.

The water heater must not be installed in an area with a corrosive atmosphere where chemicals are stored or where aerosol propellants are released. Remember the air may be safe to breathe, but the chemicals may attack the materials used in the heat pump system.

SAFE TRAY

Under certain installation conditions where damage to property can occur in the event of the water heater leaking AS/NZS 3500.4 requires the water heater be installed in a safe tray. Construction, installation and draining of a safe tray must comply with AS/NZS 3500.4 and all local codes and regulatory authority requirements. In New Zealand the safe tray must also meet the requirements of Clause G12 of the New Zealand Building Code. AS/NZS 3500.4 and the NZBC also have particular requirements when a safe tray must be installed.

Alternatively, where additional leak protection is required for installations not defined by AS/NZS 3500.4, a suitable bund may be constructed to surround the water heater in lieu of using a safe tray.

INSTALLATION

TANK WATER SUPPLY

If the storage tank is supplied with water from a tank supply and a pressure pump system is not installed, then the bottom of the supply tank must be at least 1 m above the highest point of the hot water plumbing system, including the storage tank. Care must be taken to avoid air locks. The cold water line to the storage tank should be adequately sized and fitted with a full flow gate valve or ball valve.

MAINS WATER SUPPLY

Where the mains water supply pressure exceeds that shown in the table below, an approved pressure limiting valve is required and should be fitted as shown in the installation diagram (refer to diagram on [page 52](#)).

Relief valve setting (VE/610 Series storage tanks)	1000 kPa
Expansion control valve setting *	850 kPa
Relief valve setting (SS/RT Series storage tanks)	850kPa
Expansion control valve setting *	700 kPa
Relief valve setting (SS/RW Series storage tanks)	700kPa
Expansion control valve setting *	550kPa
Max-supply pressure (VE/610 Series storage tanks)	
Without expansion control valve	800 kPa
With expansion control valve	680 kPa
Max-supply pressure (SS/RT Series storage tanks)	
Without expansion control valve	680 kPa
With expansion control valve	550 kPa
Max-supply pressure (SS/RW Series storage tanks)	
Without expansion control valve	550 kPa
With expansion control valve	450 kPa
* Expansion control valve not supplied with the water heater.	



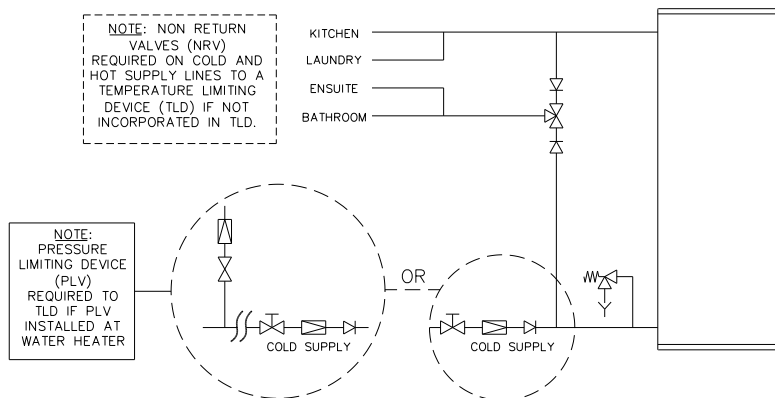
HOT WATER DELIVERY

This water heater can deliver water at temperatures which can cause scalding.

It is necessary and we recommend that a temperature limiting device be fitted between the storage tanks and the hot water outlets in any ablation area such as a bathroom or ensuite, to reduce the risk of scalding. The installing plumber may have a legal obligation to ensure the installation of this water heater system meets the delivery water temperature requirements of AS/NZS 3500.4 so that scalding water temperatures are not delivered to a bathroom, ensuite or other ablation area.

INSTALLATION

Where a temperature limiting device is installed adjacent to the storage tanks, the cold water line to the temperature limiting device can be branched off the cold water line either before or after the isolation valve, pressure limiting valve and non return valve to the water heater system. If an expansion control valve is required, it must always be installed after the non return valve and be the last valve prior to the storage tanks.



Two Temperature Zones Using a Temperature Limiting Device

If a pressure limiting valve is installed on the cold water line to the water heater system and the cold water line to a temperature limiting device branches off before this valve or from another cold water line in the premises, then a pressure limiting valve of an equal pressure setting may be required prior to the temperature limiting device.

CIRCULATED HOT WATER FLOW AND RETURN SYSTEM

This heat pump water heater may be installed as part of a circulated hot water flow and return system in a building as long as a temperature boosting water heater is not installed downstream of the heat pump.

If a temperature boosting water heater is installed the circulated hot water flow and return system must return to the inlet of the temperature boosting water heater, and not the heat pump, to avoid potential nuisance tripping. Refer to the diagram on [page 37](#).

A 3-way valve may be used to divert circulated hot water flow and return between the boosting water heater and the heat pump storage depending on the temperature in the heat pump storage tank. Consult Rheem Technical Sales for more information.

INSTALLATION

Temperature Limiting Device

A temperature limiting device cannot be installed in circulated hot water flow and return pipe work unless the device is designed for such application, such as Rheem Guardian. The tempered water from a temperature limiting device cannot be circulated. Where a circulated hot water flow and return system is required in a building, a temperature limiting device can only be installed on a dead leg, branching off the circulated hot water flow and return pipe.

If circulated tempered water were to be returned back to the water heater, depending on the location of the return line connection on the water supply line to the water heater, then either:

- water will be supplied to the cold water inlet of the temperature limiting device at a temperature exceeding the maximum recommended water supply temperature, or
- when the hot taps are closed no water will be supplied to the cold water inlet of the temperature limiting device whilst hot water will continue to be supplied to the hot water inlet of the temperature limiting device.

These conditions may result in either water at a temperature exceeding the requirements of AS/NZS 3500.4 being delivered to the hot water outlets in the ablution areas, or the device closing completely and not delivering water at all, or the device failing. Under either condition, the operation and performance of the device cannot be guaranteed.

INSULATION

To minimise heat loss and provide protection from freezing, the cold water line to and the hot water line from the heat pump water heater must be insulated in accordance with the requirements of AS/NZS 3500.4. The insulation must be weatherproof and UV resistant if exposed.

INSTALLATION

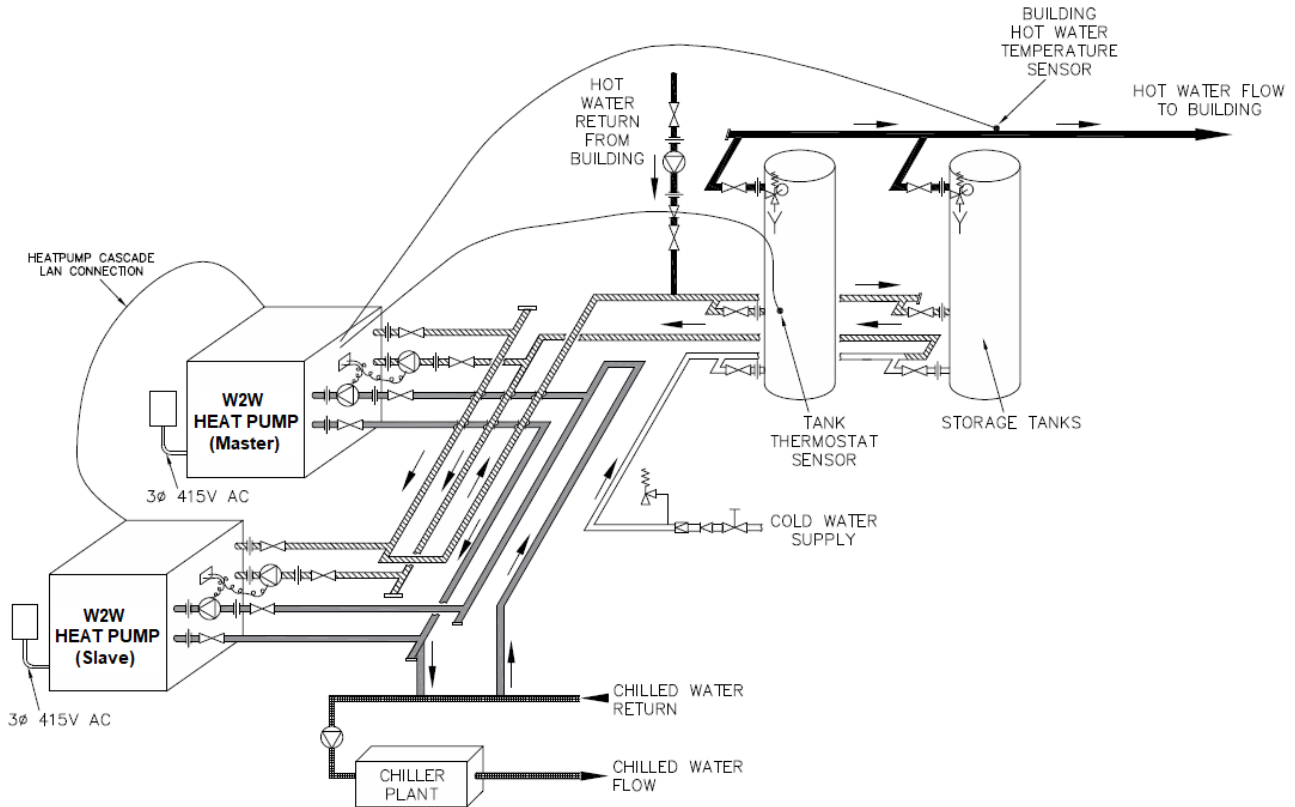
SADDLING - PIPE WORK

To prevent damage to the heat pump and storage tanks when attaching pipe clips or saddles to the water heater jacket, we recommend the use of self-drilling screws with a maximum length of 12 mm. Should pre drilling be required, extreme caution must be observed when penetrating the jacket of the water heater.

Avoid drilling or saddling in the vicinity of the refrigerant or plumbing circuits. These circuits are in close proximity to the jacket and rupturing of the circuit may occur.

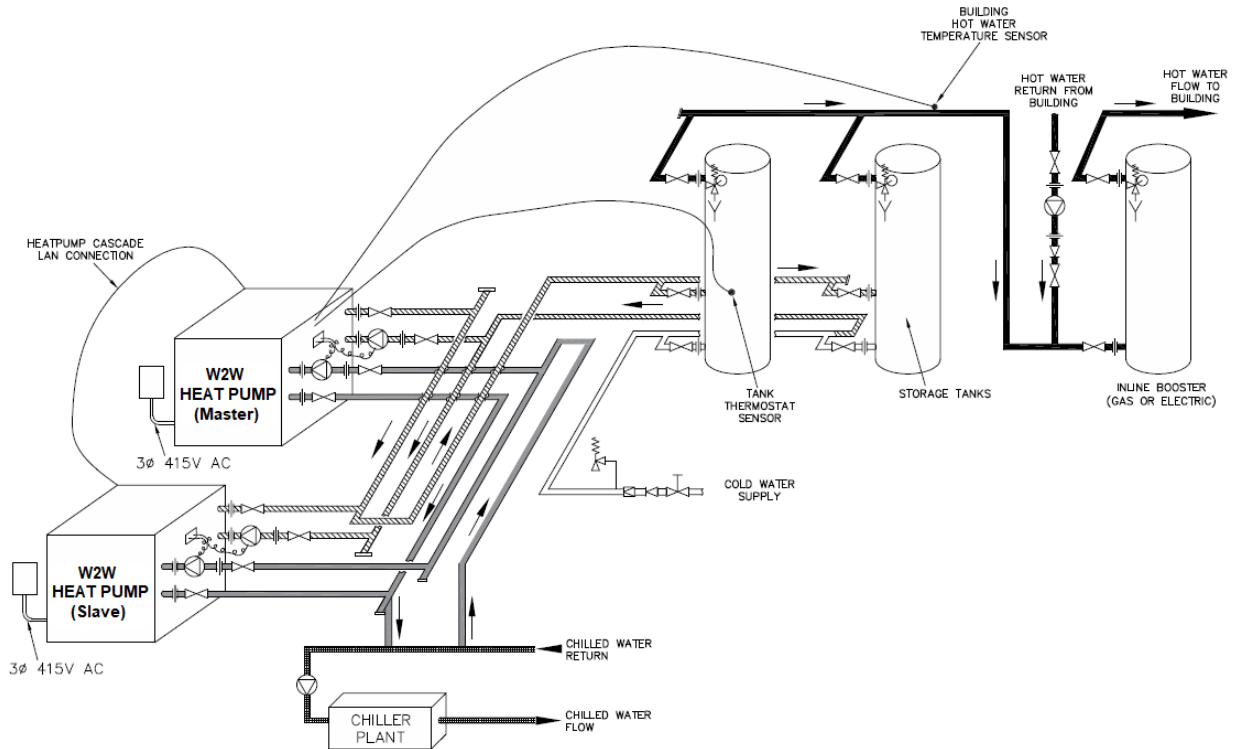
Note: If the heat pump is damaged as a result of attaching pipe clips or saddling to the jacket, any resultant faults will not be covered by the Rheem warranty.

INSTALLATION



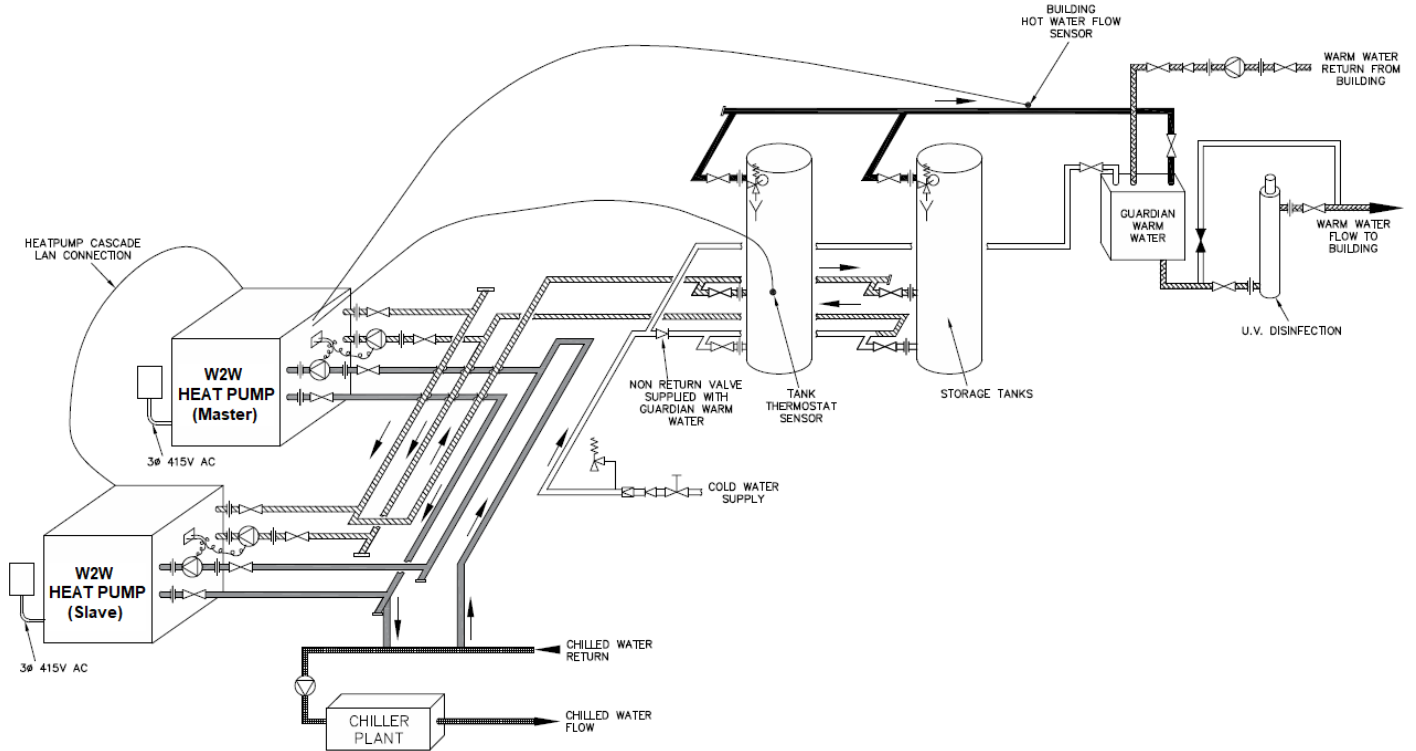
Typical W2W Heat Pump Installation with Recirculation

INSTALLATION



Typical W2W Heat Pump Installation with Inline Boost

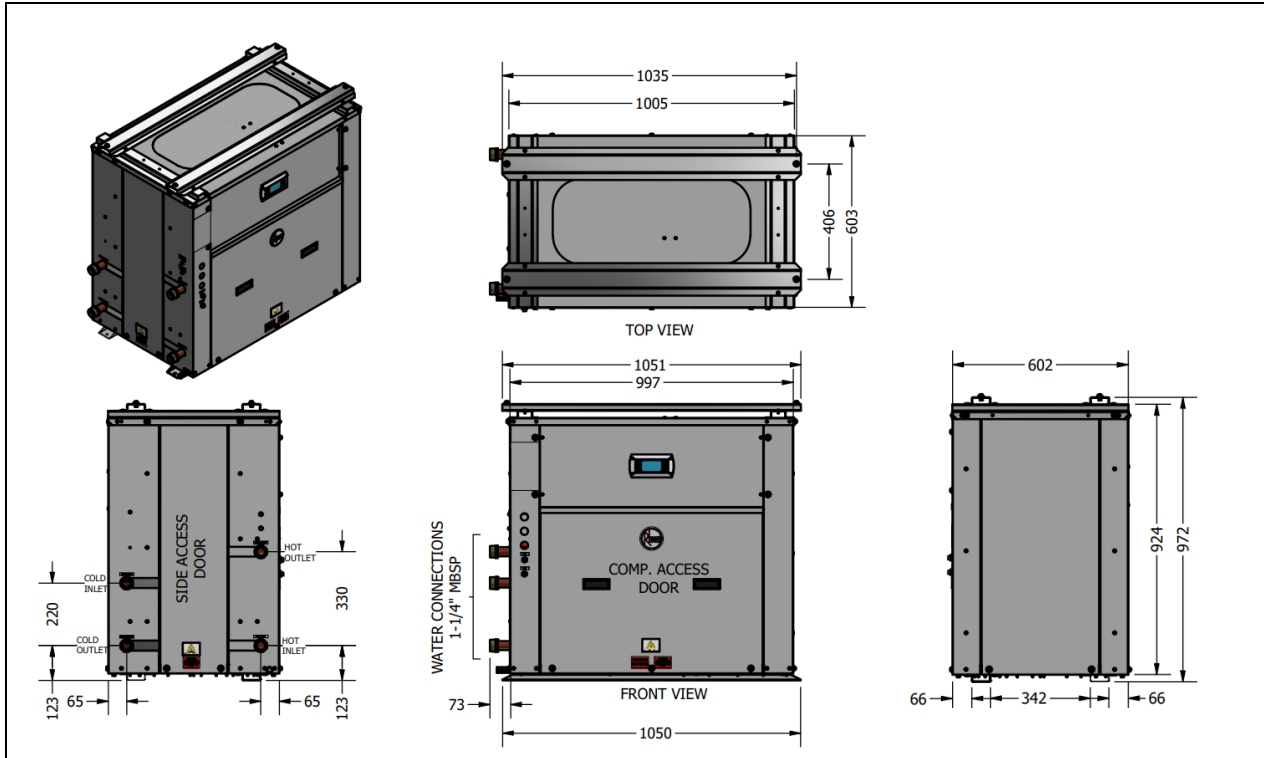
INSTALLATION



Typical W2W Heat Pump Installation with Guardian Warm Water

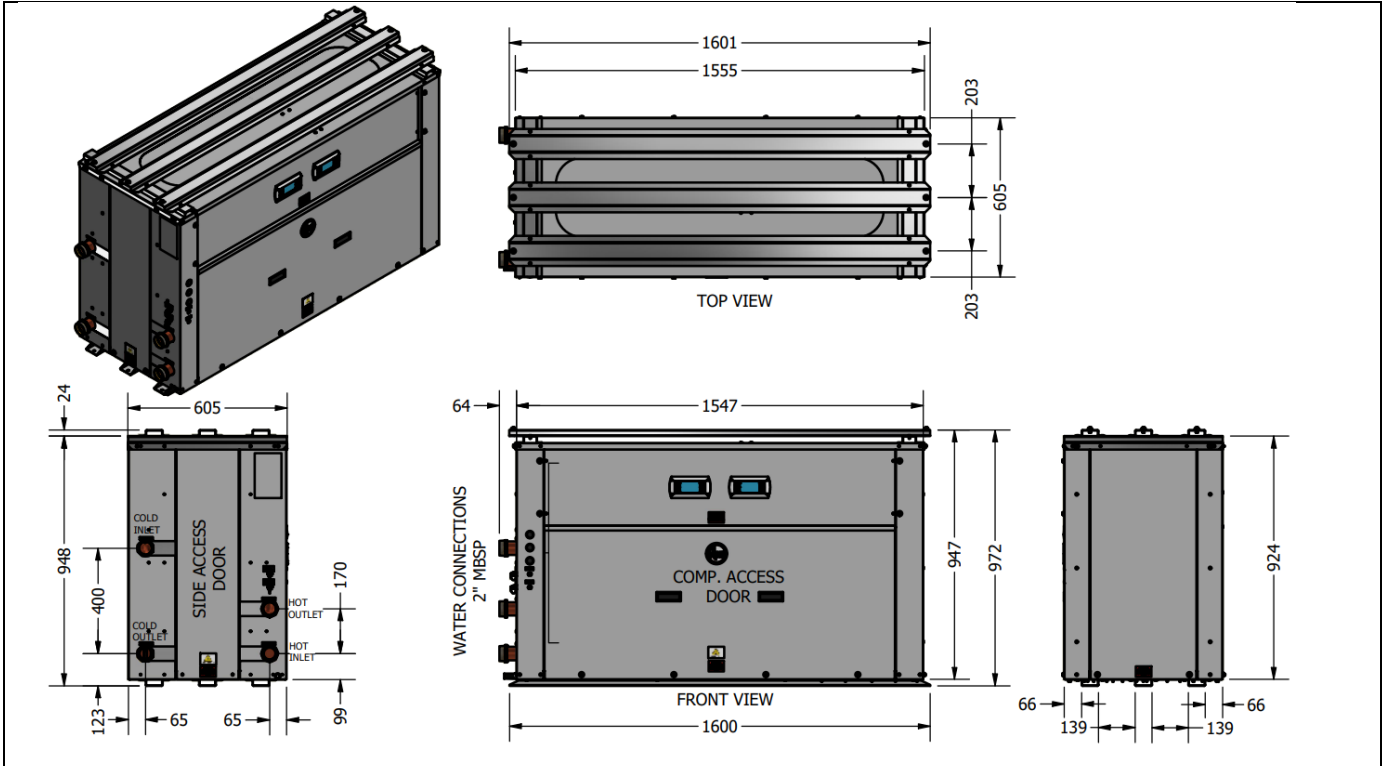
INSTALLATION

Dimensions and Technical Data- W2W 16kW Models 95501600/ 9550160V



INSTALLATION

Dimensions and Technical Data- W2W 32kW Models 95503200 / 9550320V



INSTALLATION

CLEARANCES- WATER TO WATER HEAT PUMP MODELS

Sides	Unit	All Water to Water Heat Pumps
Front	mm	850
Back	mm	Nil
Water Connections Side	mm	850
RHS Side	mm	Nil
Top	mm	Clearance above unit required for service personnel to stand

HEAT PUMP AND TANK ASSEMBLY

HEAT PUMP AND STORAGE TANKS

The heat pump water heater system is modular and comprises three main components: the heat pump water heater, storage tanks and primary circulators. An auxiliary booster and/or circulator and/or 3 way valve may also be employed as part of the system. The water heater must not be operated until all components are assembled.

HEAT PUMP

Locate the heat pump(s) in the appropriate position observing the required clearances for operation and servicing. **Refer to page 41.**

Indoor Installations

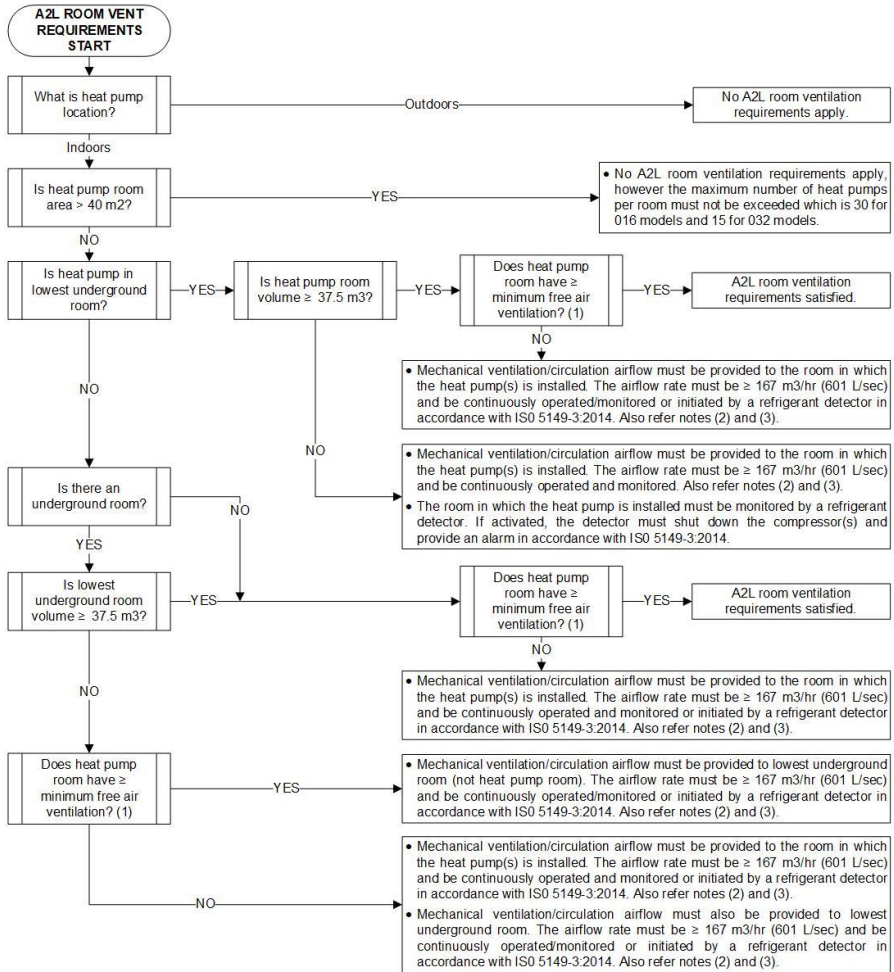
This heat pump uses R1234yf which has a global warming potential of <1. It is an A2L refrigerant, classified as mildly flammable with low burning velocity material.

The flow chart on **page 43** is provided as a guidance as they apply to this water heater in accordance with AS/NZS 60335.2.40-2019 and/or ISO 5149.3-2014, and as such cannot cover all requirements of the standards. Room area, volume and ventilation requirements are the limits required to comply with the standards with regard to A2L refrigerants.

In accordance with the standards, the requirements are calculated based on the largest single refrigeration circuit in the building, and not the cumulative refrigerant contained in multiple heat pump circuits.

HEAT PUMP AND TANK ASSEMBLY

A2L Room Ventilation Requirements



Notes:

(1) Minimum free air ventilation is 0.078 m² (must be 780 mm wide x 200 mm high minimum vent with 50% free air openings) located with the bottom of the vent no higher than 100 mm from the floor, and the top of the vent no higher than 300 mm from the floor. A second opening of 0.039 m² free air ventilation (e.g. 300 mm x 300 mm vent with 50% free air openings) shall be located between 1.5 m and 2.2 m from the floor.

(2) The airflow reaching height shall not exceed 2.2 m (measured from floor to top of ventilation/circulation fan or top of airflow ventilation opening).

(3) If the airflow rate falls below the minimum airflow rate, the compressor(s) must be shut down within 10 seconds and an alarm must be activated to warn the user that the airflow is reduced. This is typically achieved by one of the following methods:

- By a BMS monitoring system connected to the heat pump.
- By a sail or pressure switch connected to an alarm system and the heat pump 'Remote ON/OFF' terminal block (240 VAC input = ON).

HEAT PUMP AND TANK ASSEMBLY

WATER HEATER LOCATION

This water heater can be installed indoors or outdoors. Indoor installation is allowable if the requirements of the flow chart on **page 43** are met.

The water heater should be installed close to the storage tanks and its position chosen with noise, safety and service in mind.

It is advisable to install the water heater away from bedroom or living room windows as the system can generate a noise of up to 62dBA, model dependent, (at 3 metres from the water heater) whilst operating.

It is recommended the water heater be installed at ground or floor level. Stacked units with base unit at ground or floor level is acceptable from a servicing perspective.

The water heater must stand vertically upright.

Clearance must be allowed for servicing of the water heater. Refer to **page 41** for clearance data. The water heater must be accessible without the use of a ladder or scaffold.

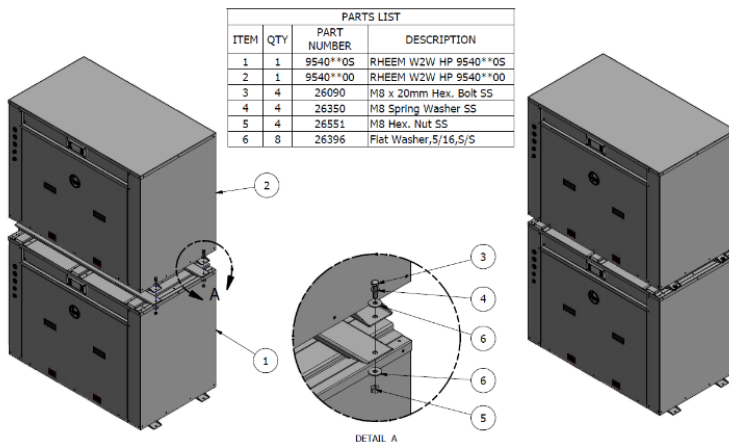
You must be able to read the information on the rating plate. Remember you may have to remove the entire water heater later for servicing.

The water heater must not be installed in an area with a corrosive atmosphere where chemicals are stored or where aerosol propellants are released. Remember the air may be safe to breathe, but the chemicals may attack the materials used in the heat pump system.

Stacked Installations

The water heater can be stacked two high to reduce footprint as shown in the diagram below.

HEAT PUMP AND TANK ASSEMBLY



STORAGE TANKS

Rheem Commercial storage tanks are employed to store the hot water generated by the heat pump. The tanks must be manifolded using the Equa-Flow[®] manifold system to ensure even distribution of the stored energy. Up to ten tanks can be manifolded together in a single bank. More than one bank can be used. Follow the diagram on [page 50](#) when manifolding the tanks.

Refer to the installation instructions supplied with the storage tanks for specific information relating to the installation of the storage tanks.

PRIMARY CIRCULATORS

Each side (cold and hot) of the heat pump requires a primary circulator to ensure the correct flow rate and temperature rise is achieved. Where more than one heat pump is installed the common manifold must be installed using the Equa-Flow[®] manifold system and must be sized to accommodate the total flow of all the primary pumps running simultaneously.

Refer to table below for minimum (ID) pipe sizing.

The designed primary pump per 16kW model is Grundfos model CM3-2 and per 32kW model is CM10-1. Refer to installation manuals supplied with pumps. If another pump has been supplied, consult Rheem before continuing with the installation.

W2W H A2W HP 16kW				
Hot Side				
No. Heat Pumps in Parallel	1	2	3	4
Pump	Grundfos CM3-2			

W2W HP 32kW				
Hot Side				
No. Heat Pumps in Parallel	1	2	3	4
Pump	Grundfos CM10-1			

HEAT PUMP AND TANK ASSEMBLY

Branch Size (mm)	40			
Header Size (mm)	40	50	65	80
Cold Side				
No. Heat Pumps in Parallel				
Pump	Grundfos CM3-2			
Branch Size (mm)	40			
Header Size (mm)	40	50	65	80

Branch Size (mm)	50			
Header Size (mm)	50	80	100	100
Cold Side				
No. Heat Pumps in Parallel				
Pump	Grundfos CM10-1			
Branch Size (mm)	50			
Header Size (mm)	50	80	100	100

Header pipe sizing is based on one pump per heat pump with a total length of 40m of primary flow and return piping and 20 x 90° bends, excluding Equa-flow manifolds on storage tanks and heat pumps, at 1.2m/sec velocity. If this specification is exceeded consult Rheem before continuing with the installation.

Multiple heat pumps **MUST** be installed using Equa-Flow® principles to ensure the demand on each heat pump (or storage tank) in the bank is the same as any other. To achieve this, the following is necessary:

1. The **inlet** manifolds must be designed to balance the flow to each heat pump i.e. each branch line must be the same diameter and length.
2. The **outlet** manifold must be designed to balance the flow from each heat pump i.e. each branch line must be the same diameter and length.
3. The first heat pump in must be the last heat pump out.

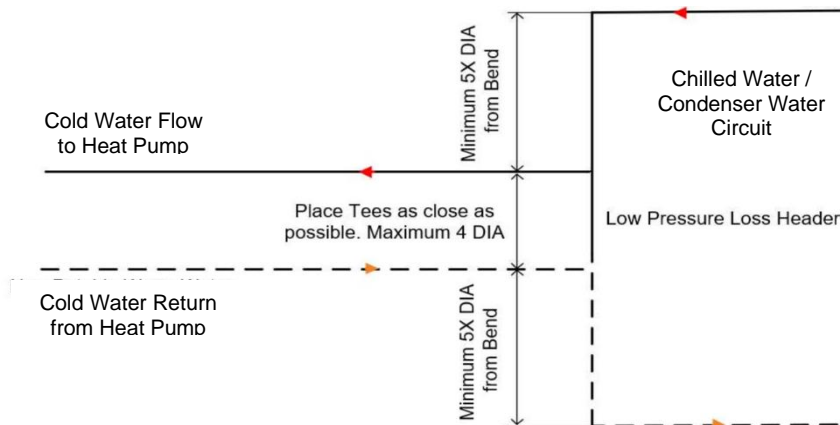
Note: Inlet and outlet water isolation valves **MUST** be installed at each heat pump to enable each heat pump to be individually isolated for servicing. The inlet isolation valve **MUST** be installed before the pump to also enable the pump to be isolated for servicing. Note: non-return valves are NOT required after the pumps.

LOW PRESSURE LOSS HEADER – COLD WATER SIDE

It is recommended to install the cold water side primary flow and return in a low pressure loss header arrangement. This will ensure independent operation of the heat pump circuit to the main chiller/condenser loop. Refer to the diagram on **page 47**.

The take offs to and from the heat pump should be as close as possible and no more than 4 pipe diameters of the main chilled water/condenser line. The take offs must be a minimum of 5 pipe diameters from any bends.

HEAT PUMP AND TANK ASSEMBLY



Low Pressure Loss Header Arrangement

AUXILIARY WATER HEATER

It may be necessary to install an auxiliary water heater under the following conditions:

- If poor flow rate is sensed or the cold side outlet temperature or hot side outlet temperature is likely to drop below 5°C during periods when heating may be required.
- To ensure sufficient hot water is available for higher than expected peak conditions.
- If higher temperature water is required for certain applications, eg commercial laundry or kitchen.

The configuration of the auxiliary water heating plant can vary depending on the requirements of the individual installation.

Operation at Activation of Freeze Protection Only - Where the auxiliary water heater is required to be activated if the heat pump cannot operate due to freeze protection, the heat pump can activate the auxiliary heater or pump. There are many configurations depending on system design. Consult the Application Guide for details on the auxiliary boost function designed for this system.

In Line Boosting Only - Where the auxiliary water heater is required to ensure sufficient hot water is available for periods after the main peak or to boost the temperature of the water produced by the heat pump for other purposes (eg high

HEAT PUMP AND TANK ASSEMBLY

temperature for kitchen and laundry use), an auxiliary water heater must be installed in-series with the storage tanks. ie, the hot water outlet from the storage tanks must feed into the inlet of the auxiliary water heater(s).

Note: Where RT and RW storage tanks are used, boosting in the top portion of the storage tank is equivalent to boosting in series.

Where multiple auxiliary water heaters are required to be manifolded together, these must be manifolded using the Equa-Flow® manifold system and the manifold in-series with the storage tanks. Refer to **page 50**.

This arrangement can also be adapted to include recirculation heat loss make up and / or freeze protection activation heating. Refer to Application Guide for options.

MANIFOLD INSTALLATIONS

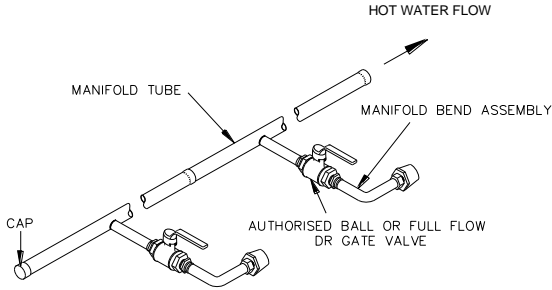
The Rheem commercial heat pump water heater is designed to be installed with storage tanks on a single manifold or multiple manifolds if required, using the Rheem Equa-Flow® manifold system. The Equa-Flow principle will function with water heaters in line, around a corner or in rows back to back (refer to the diagrams on **pages 50 to 51**).

The cold water, primary flow and hot water manifolds must be designed to balance the flow from each water heater and storage tank. To achieve this, there are basic installation requirements and principles which must be followed:

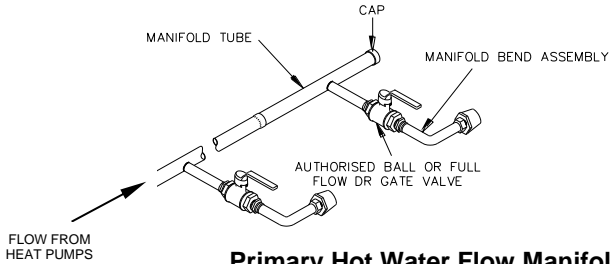
1. The maximum number of storage tanks in a bank should be 10, however several banks of storage tanks can be installed.
2. The hot water line from the manifold must leave from the opposite end to which the cold water line enters the manifold.
3. The storage tanks must be of the same model.
4. The cold water line, cold and hot headers and hot water line must be sized to meet the requirements of both AS/NZS 3500.4 and the application.
5. A non-return valve, isolation valve and if required a pressure limiting valve and expansion control valve, must be installed on the cold water line to the system.
6. A full flow gate valve or ball valve (not a stop tap, as used on a single water heater installation) must be installed on both the cold water branch and hot water branch of each water heater and storage tank.
7. Non return valves or pressure limiting valves **MUST NOT** be installed on the branch lines to the water heaters or storage tanks.
8. All fittings, valves and branch lines must be matched sets all the way along the manifold.
9. Sufficient space must be left to enable access, servicing or removal of any water heater or storage tank.
10. The temperature pressure relief valve drain line from each storage tank can terminate at a common tundish (funnel) with a visible air break at each drain discharge point.

MANIFOLD INSTALLATIONS

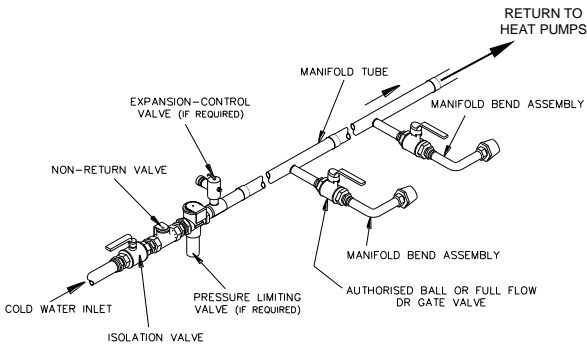
Manifold Arrangement



Hot Manifold Assembly

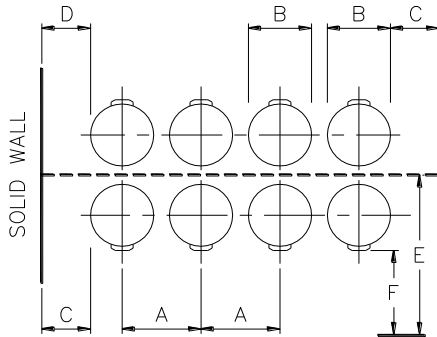
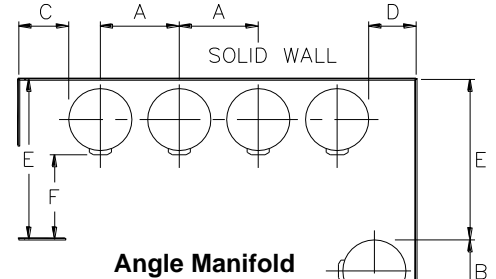
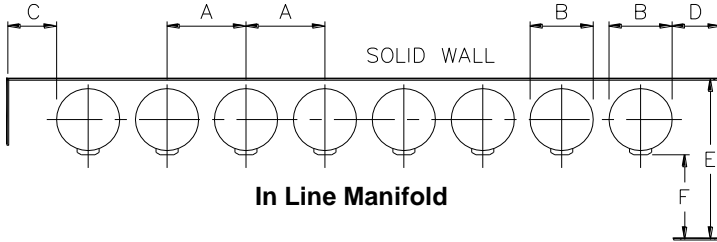


Primary Hot Water Flow Manifold Assembly



Cold Manifold Assembly

MANIFOLD INSTALLATIONS



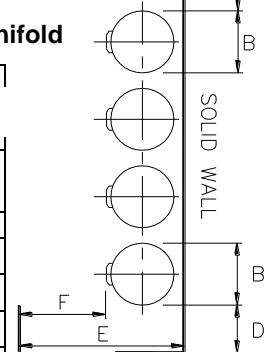
NOTES:

Minimum recommended space between wall and back of water heater is 100 mm.

A minimum of 900 mm (E* & F*) should be left in front of the water heater for access, servicing and water heater removal.

Installation Layout Minimum Dimensions

Model	A	B	C	D	E *	F *
610 430	935	685	300	100	1685	900
RT/RW 1000	1250	1000	300	100	2100	1000
RT/RW 2000	1550	1300	300	100	2700	1300
RT/RW 3000	1700	1450	300	100	3000	1450
RT4000	1850	1600	300	100	3300	1600
RT5000	2050	1800	300	100	3700	1800



INSTALLATION DIMENSIONS – MULTIPLE RHEEM STORAGE TANKS

CONNECTIONS – PLUMBING

CONNECTION SIZES

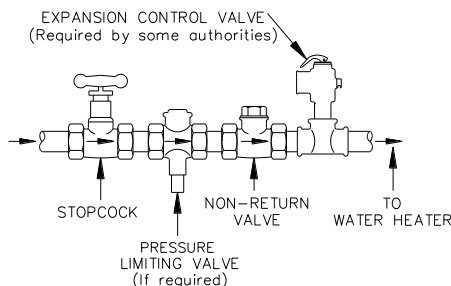
Model	16kW	32kW
Heat pump water heater inlet connection	R1¼ BSPM	R2 BSPM
Heat pump water heater outlet connection	R1¼ BSPM	R2 BSPM
Condensate drain connection	20mm O.D	

All plumbing work must be carried out by a qualified person and in accordance with the Plumbing Standard AS/NZS 3500.4 and local authority requirements.

WATER INLET AND OUTLET

The pipe work must be cleared of foreign matter before connection and purged before attempting to operate the water heater. All olive compression fittings must use brass or copper olives. Use thread sealing tape or approved thread sealant on all screwed fittings.

An isolation valve and non-return valve must be installed on the cold water line to the water heater system. An acceptable arrangement is shown in the diagram. Refer also to “Hot Water Delivery” on **page 32** and to “Mains Water Supply” on **page 32**.



Disconnection unions are required at the cold water inlet and hot water outlet on the water heater to allow for disconnection of the water heater.

PIPE SIZES

To achieve true mains pressure operation, the cold water line to the storage tanks should be the same size or bigger than the hot water line from the storage tanks.

The pipe sizing for hot water supply systems should be carried out by persons competent to do so, choosing the most suitable pipe size for each individual application. Reference to the technical specifications of the water heater and local regulatory authority requirements must be made.

Refer to the table on **page 45** for correct primary flow and return pipe sizing.

RELIEF VALVE

The heat pump is supplied with an integral pressure relief valve located on the inside of the heat pump cabinet and will discharge into the tray of the heat pump. Refer to Condensate Drain on **page 53** for drainage instructions.

CONNECTIONS - PLUMBING

EXPANSION CONTROL VALVE

Local regulations may make it mandatory to install an expansion control valve (ECV) in the cold water line to the water heater system. In other areas, an ECV is not required unless the saturation index is greater than +0.4 (refer to "Water Supplies" on **page 22**). However, an ECV may be needed in a corrosive water area where there are sufficient quantities of silica dissolved in the water.

The expansion control valve must always be installed after the non return valve and be the last valve installed prior to the water heater system (refer to diagram on **page 49**).

EXPANSION CONTROL VALVE DRAIN

A copper drain line must be fitted to the relief valve to carry the discharge clear of the water heater. Connect the drain line to the relief valve using a disconnection union. The pipe work from the relief valve to the drain should be as short as possible and fall all the way from the water heater with no restrictions. It should have no more than three right angle bends in it. Use DN15 pipe.

The outlet of the drain line must be in such a position that flow out of the pipe can be easily seen (refer to AS/NZS 3500.4) - but arranged so hot water discharge will not cause injury, damage or nuisance. The drain line must discharge at an outlet or air break not more than 9 metres from the relief valve.

In locations where water pipes are prone to freezing, the drain line must be insulated and not exceed 300 mm in length. In this instance, the drain line is to discharge into a tundish through an air gap of between 75 mm and 150 mm.

CONDENSATE DRAIN

A drain line must be fitted to the condensate drains to carry the discharge clear of the water heater. The drain line can be extended using 20 mm O.D. rigid hose or conduit. Where installed externally, the drain line pipe work must be UV resistant or protected from sunlight. The outlet of the drain line must be in such a position that flow out of the pipe can be easily seen - but arranged so water discharge will not cause damage or nuisance.

The condensate drain must not be connected to the pressure relief or expansion control valve drain line but may discharge at the same point.

CONNECTIONS – ELECTRICAL

The power supply to the water heater must not be switched on until the water heater is filled with water and a satisfactory megger reading is obtained.

Megger Reading

When a megger test is conducted on this water heater, then the following should be noted.

⚠ Warning: This water heater contains electronic equipment and 500 V insulation tests must only be conducted between actives and earth and between neutral and earth. An active to neutral test WILL damage the electronics.

An insulation test result of above 1 MΩ should be obtained for this water heater.

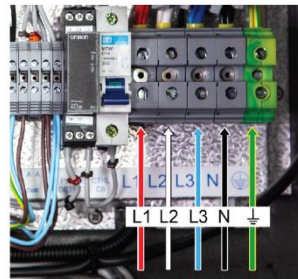
Electrical Connection

All electrical work and permanent wiring must be carried out by a qualified person and in accordance with the Wiring Rules AS/NZS 3000 and local authority requirements.

Heat Pump

The heat pump water heater must be directly connected to a 380-415 V AC 50 Hz mains power supply. The heat pump must be on its own circuit with an appropriately sized circuit breaker and isolating switch installed at the switchboard. A secondary isolating switch must be installed within reach of the water heater.

If the heat pump is installed within a machinery room, as defined by ISO 5149.1-2014 (ie where mechanical ventilation is used), then a remote emergency isolation switch in accordance with ISO 13850 and IEC 60204.1 must be additionally installed outside the machinery room and at a suitable location within the machinery room.



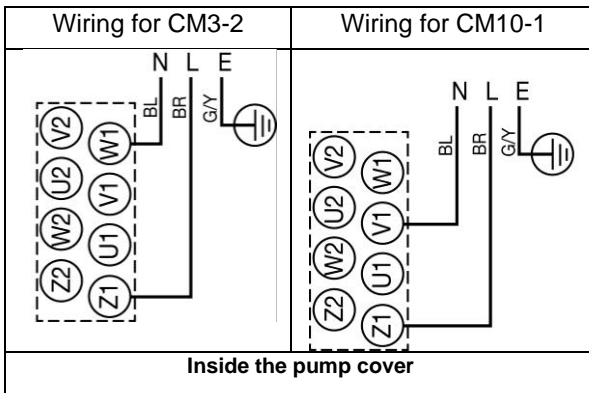
A conduit is required for the electrical cable to the heat pump water heater. The conduit is to be connected to the unit with a 20mm terminator. Holes are provided on the electrical panel for cabling. Connect the power supply and earth wires directly to the terminal block, ensuring there are no excess wire loops inside the electrical enclosure. Correct phase connection is required.

Two (2) ferrites are supplied in the bag containing the sensor cables. Follow the instructions supplied with the ferrites to fit the ferrites on the cable.

Electrical Data Table		
Model	16kW	32kW
Electrical Connection	3 Phase / 380 - 415 Volts / 50 Hz	
Max Current per Phase (running, excl pumps)	9.6A	19.3A
Max Pump Current (allow for 2 x pumps per heat pump)	2 x 2.4	2 x 4.4
Minimum Circuit Size (per phase)	20A	40A

Hot and Cold Side Pumps

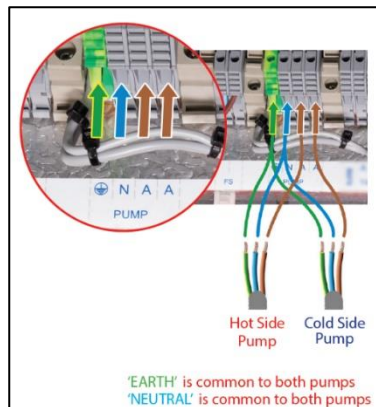
The power to the hot side pump and cold side pump for each heat pump is supplied from the water heater (heat pump enclosure). Connect the active, neutral and earth wire to the pump terminals as shown in the diagram inside the pump cover and to the terminals located within the heat pump electrical enclosure.



A 20 mm conduit is required for the electrical cable between the water heater and pump. The conduit is to be connected to the water heater with a 20 mm terminator.

Holes are provided on the electrical panel for cabling.

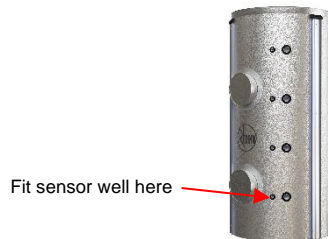
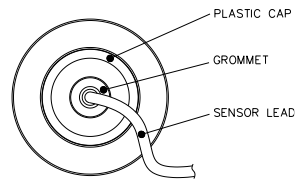
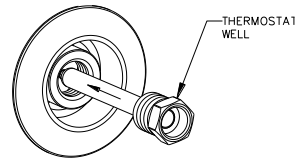
Photo inside the heat pump enclosure



Tank Sensor Installation

Connect one of the supplied temperature sensors to the connection terminal on the heat pump marked “Tank Sensor”.

- Run out the sensor to the nearest storage tank.
- For 610 and RW series tanks, a thermostat well is supplied within each tank.
- Remove the plastic cover from the fitting located 90° from the water connections on the storage tank, but do not discard.
- Make a small hole in the centre of the plastic cap and thread the sensor through the hole.
- For RT series tanks, a thermostat well is supplied which needs to be fitted to the lowest fitting as shown.
- Insert the sensor all the way into the thermostat well and fit the plastic cap back onto the storage tank.
- To prevent the sensor dislodging from the well, screw the cable to the tank jacket using a cable clamp.
- Cable tie the sensor lead, curling up and tying off any excess lead.



Building Flow Temperature Sensor Installation

- Connect the 2nd temperature sensor to the connection terminal on the heat pump marked “Building Flow Sensor”.
- Run out the sensor to the building flow pipe.
- Fit a thermostat well (not supplied) in the pipe ensuring the end of the sensor is in the flow of water. To prevent the sensor dislodging from the well, secure the sensor to the insulation using a cable tie. Alternatively, clamp the sensor to the outside of the pipe using a pipe clamp prior to the insulation being fitted.

Note: where multiple 16kW model heat pumps are installed, the preferred method is to interconnect the heat pumps (up to 6 maximum) via LAN cables, available as an accessory (part number: 17670).

In this case, only one tank sensor and building flow temperature sensor is required, which are connected to the heat pump designated as the Main.

Alternatively, each 16kW or 32kW heat pump can operate independently in which case each tank sensor and building flow temperature sensor must be connected and fitted as described above.

Note: failure to fit a sensor when independantly operated will result in a sensor error alarm.

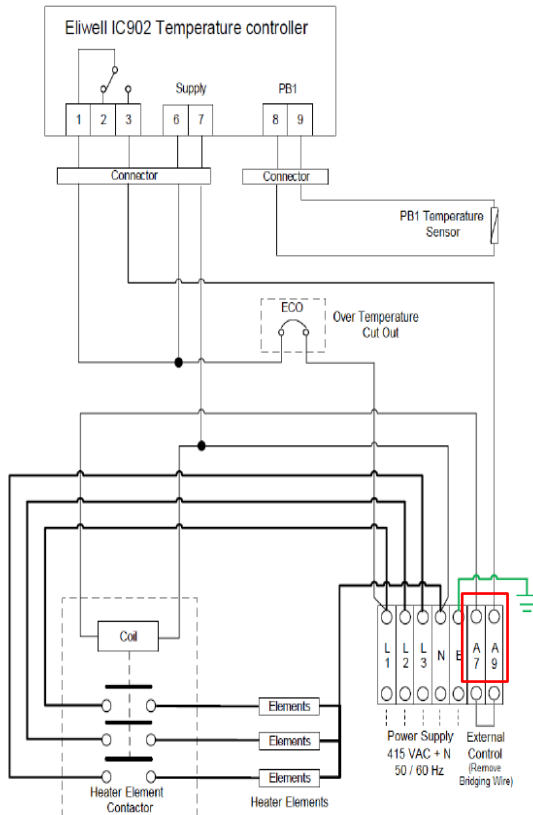
Note: It is not possible to LAN connect 32kW model heat pumps in a Master/Slave arrangement.

Where the number of 32kW heat pumps exceeds the number of storage tanks multiple sensors will need to be fitted to each tank. A larger thermal well will be required to allow up to two sensors to fit within one tank. (Accessory part number 079445).

Auxiliary Boost Element

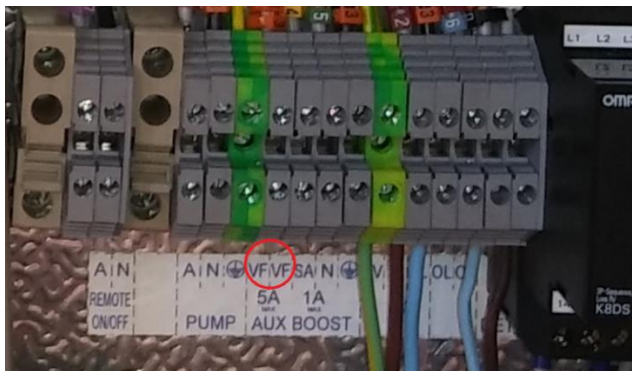
Depending on the installation, an auxiliary boost element may be supplied with an RT or RW series storage tank.

If an auxiliary boost element is supplied by Rheem, remove bridging wire at the terminals marked 'A7 and A9' behind the element controller cover and connect the terminal 'A7' and 'A9' of the element to the voltage free terminal marked 'VF / VF' in the heat pump enclosure to control the operation of the boost element. Wiring is not polarity sensitive. Refer to the diagram on **page 58** and photo on **page 59**



Electric Heating Unit – Wiring Diagram

CONNECTIONS - ELECTRICAL



Picture of heat pump terminal strip

Auxiliary Element Control by Individual Heat Pumps – All models

Where multiple auxiliary boost elements are required, and the number of auxiliary boost elements matches the number of heat pumps, each element may be interlocked with an individual heat pump directly using the method described above. In this case, the heat pumps should operate independently, and each have their own tank and building flow temperature sensor connected.

Auxiliary Element Control by Master Heat Pump – 16kW models

Where the number of auxiliary boost elements does not match the number of heat pumps or the heat pumps are connected in a Main/Sub arrangement using LAN cables (refer to **page 61**), then the heat pumps must be connected via LAN cables and control of the auxiliary boost elements will be via the Main heat pump using an intermediary relay arrangement. Refer to Application Guide for more detail.

Auxiliary Element Control - 32kW models

Where the number of 32kW model heat pumps does not match the number of auxiliary boost elements (greater than or less than) then connect each heating element to an individual heat pump where possible using the method described above.

For the balance, where multiple heat pumps need to control a single element or multiple elements need to be controlled by a single heat pump, then control of the auxiliary booster elements will be via an intermediary relay box (not supplied) and powered by the heat pump “SA”, “N” and “GND” terminals.

CONNECTIONS - ELECTRICAL

Auxiliary Boost Heater (external to storage tank)

Depending on the installation, an auxiliary heater and/or boost pump may be supplied. Refer to Application Guide for auxiliary boost options.

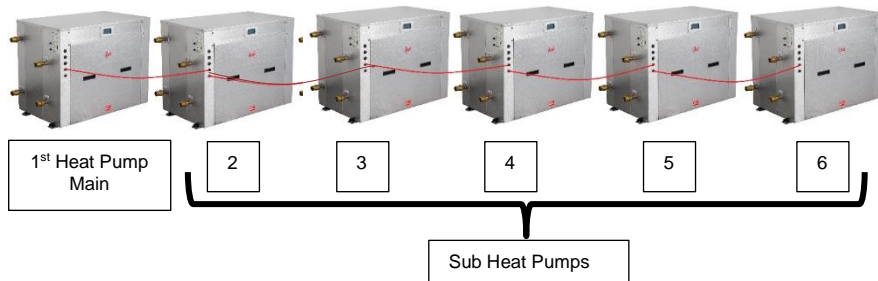
In the heat pump enclosure, terminals marked “SA”, “N” and “GND” provide 240V to control the auxiliary heater and/or auxiliary pump or multiple boost elements or allow one boost heater to be controlled by multiple heat pumps depending on the system design. Maximum current is 1A. Refer to Application Guide for further information to connect auxiliary boost heater.

For 16kW models connected in a Main/Sub arrangement using LAN cables (up to six heat pumps) (refer to **page 61**), and control of the auxiliary boost heaters will be via the Main heat pump. Refer to Application Guide for more details.

CONNECTIONS - ELECTRICAL

Multiple Heat Pump Installation using LAN Cables – 16kW

Up to six 16kW heat pumps can be interconnected by daisy chaining the LAN cables for operation as shown below. LAN cable is available as an accessory (part number: 17670).



Interconnect the heat pumps as shown above by using the LAN cables. Determine the 1st heat pump as MAIN. Route the cables neatly to prevent damage and trip hazards. Do not route across access panels.

Notes

1. Any of the two LAN connections will be acceptable.
2. Tank Temperature Sensor and Building Temperature Sensor for the MAIN heat pump must be connected, otherwise the heat pumps will not operate due to fault. There is no need to connect tank and building temperature sensors for SUB heat pumps.
3. 30kW models cannot be connected in Main/Sub arrangement.

Building Management Systems (BMS/BAS)

Each water heater can be connected to a BMS or BAS system via interface cards (Modbus RS485 or BACnet MS-TP or BACnet TCP/IP Ethernet), available as an accessory.

Modbus RS485 is provisioned on the controller and can be used for BMS connection without any additional interface cards when each 16kW heat pump is directly connected to the BMS.

Interface cards, supplied by Rheem, are required for BACnet MS-TP or BACnet TCP/IP Ethernet, or if multiple 16kW model heat pumps are connected to BMS in Main/Sub arrangement using Modbus RS485.

CONNECTIONS - ELECTRICAL

If an interface card is required, connect to Rheem IQ control panel as shown in the diagram below.



- If the system is comprised of single or multiple standalone heat pumps, each heat pump will have its own BMS card and/or connection.

If required, insert the BMS card into the connector for each heat pump, taking care that the card is firmly placed as shown in red circle.

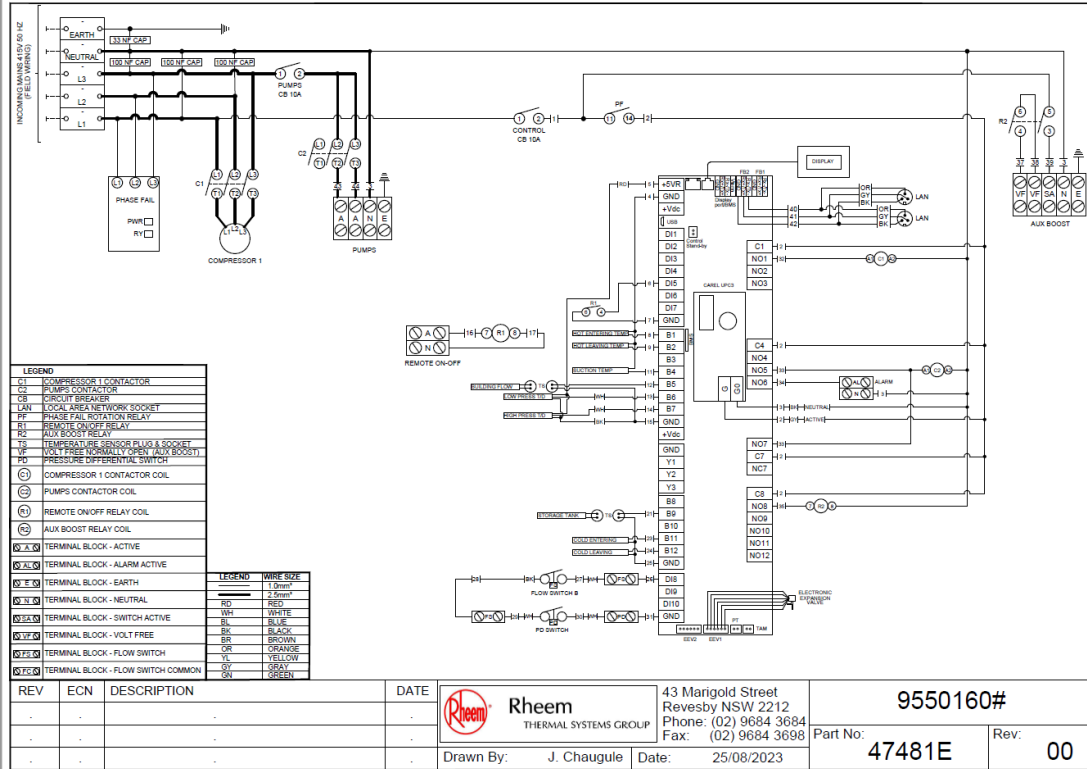
- If the system is comprised of multiple heat pumps (16kW models only) for Main/Sub operation, only the MAIN heat pump will have a BMS card and the SUB heat pumps will be connected via LAN cables.

Follow the instruction on [page 61](#) for Interconnecting Multiple Heat Pumps from step 1 to step 2.

Insert the BMS card into the connector for MAIN heat pump, taking care that the card is firmly placed as shown in red circle.

CONNECTIONS - ELECTRICAL

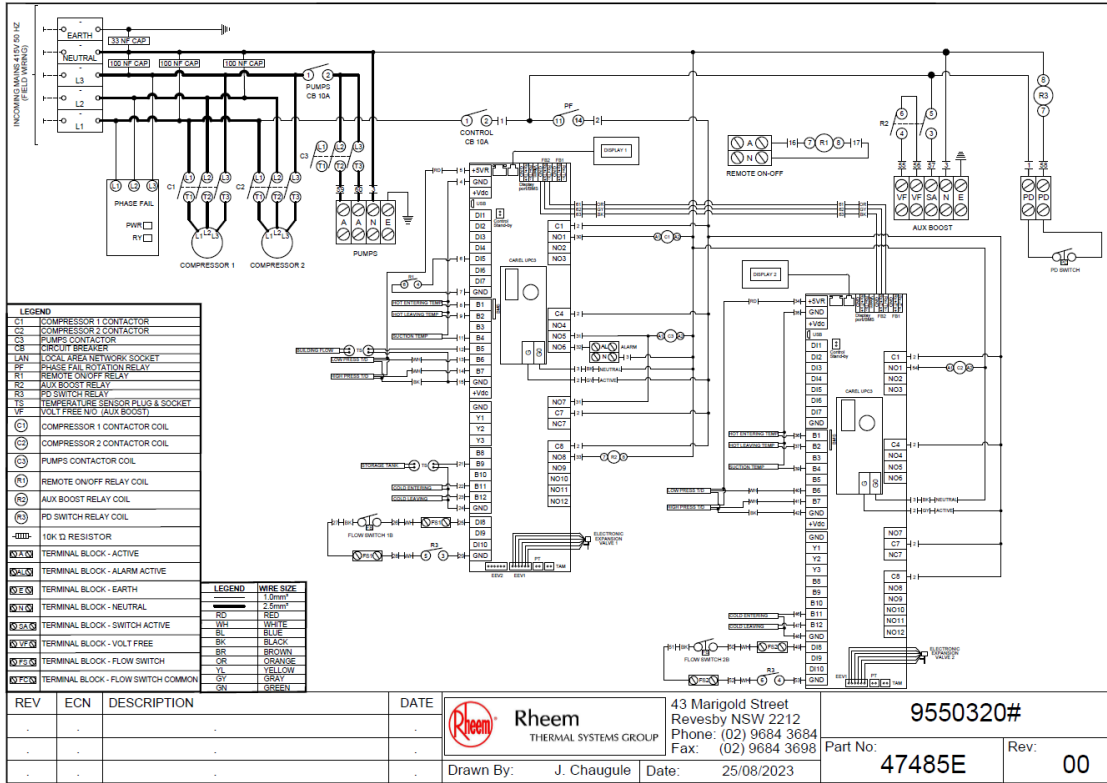
16KW HEAT PUMP WIRING DIAGRAM – 955016 MODELS



REV	ECN	DESCRIPTION	DATE	Rheem THERMAL SYSTEMS GROUP	43 Marigold Street Revesby NSW 2212 Phone: (02) 9684 3684 Fax: (02) 9684 3698	9550160# Part No: 47481E Rev: 00
-	-	-	-			
-	-	-	-			
Drawn By: J. Chaugule Date: 25/08/2023						

CONNECTIONS - ELECTRICAL

32KW HEAT PUMP WIRING DIAGRAM – 955032 MODELS

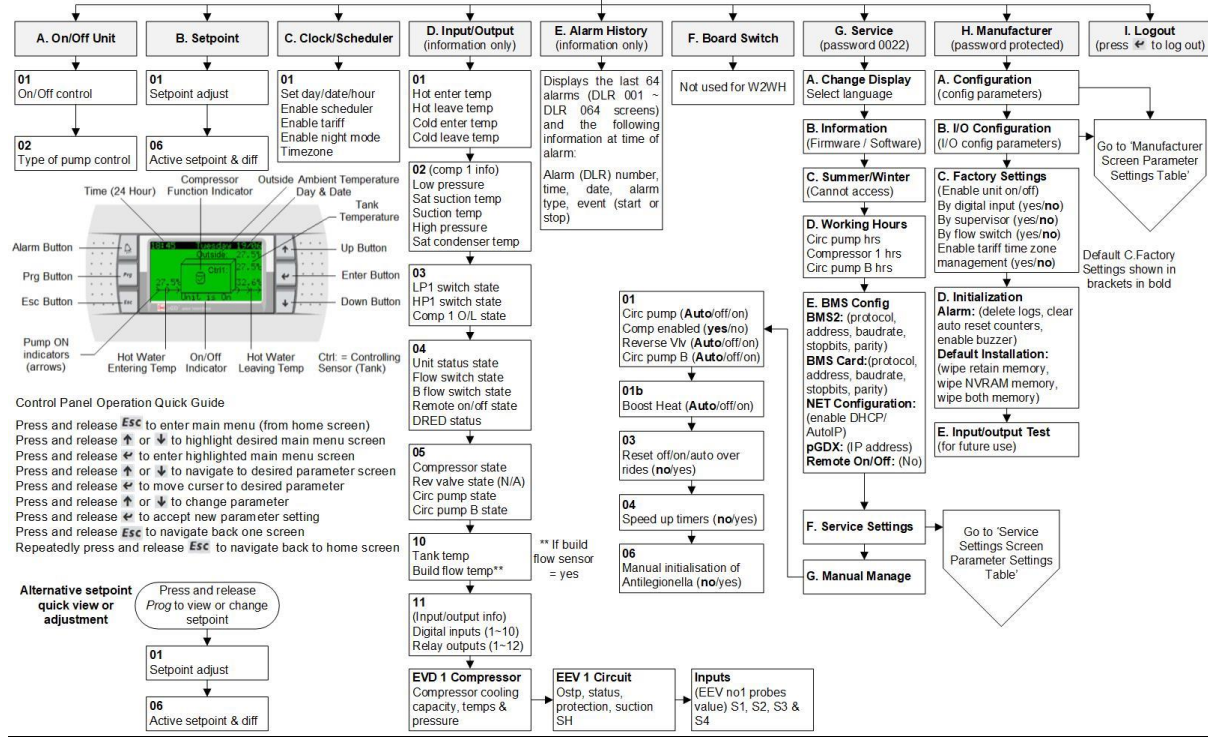


CONNECTIONS - ELECTRICAL

Controller and Display Information

Rheem parameter sheets 0030 & 0031
W2WH Software V1.0.10-1

START Press and release *Esc*
to enter main menu (greyed)



CONNECTIONS - ELECTRICAL

Note: If no keys are pressed for 60 seconds, screen reverts to main display screen and any changes made and not confirmed will be lost.

Set Point Quick Setting

Press '**prg**' from the main display screen and the Set Point page will appear. Cursor will be on the set temperature. Pressing the up and down keys will adjust the setting in 0.1 increments. Hold down for rapid change. Press '**Enter**' to confirm change. Press '**esc**' to return to the main display screen. The factory setting is 61°C. The set point can be adjusted up to 65°C depending on site suitability after consulting with Rheem.

Menu Item

- A. **01 - On/Off** – Press '**enter**' to access change. Press '**up**' or '**down**' to turn unit on or off. Press '**enter**' to confirm.
02 - Press '**down**' key to display type of circulating pump control.
Default: AUTOMATIC ON TEMP
Press '**esc**' to return to Menu Master.

- B. **01 - Set Point** - displays the tank maximum set point at which the compressor will be deactivated. Cursor will be on the set temperature. Pressing the '**up**' and '**down**' keys will adjust the setting in 0.1 increments. Hold down for rapid change. Press '**enter**' to confirm change. Press '**esc**' to return to the Menu Master.

- C. **01 - Clock / Scheduler** – time and date are set here. Other adjustments include:
 - i. **Enable Scheduler:** No (controls heat pump operating time based on programmed time period)
 - ii. **Enable Tariff:** No (controls heat pump operating time based on tariffs)
 - iii. **Enable Night Mode:** No (no function for W2W heat pumps)
 - iv. **Timezone:** No (enables time zones to apply to Scheduler and Tariff functions above)

CONNECTIONS - ELECTRICAL

- i. **Enabling Scheduler** to 'Yes' will open a 2nd page which will allow the user to program specified operating times on a 7-day basis.
E.g.:

Clock Schedule

Mon 00:00 to 00:00

Tue 00:00 to 00:00

Pressing the '**down**' key will reveal a 2nd page in the Clock Scheduler:

- Do you want to enable Special Event: No
(programs the temperature to be maintained during a specified date range)

Enabling the Special Event to 'Yes' allows user to program in the desired date range, set point and differential to be maintained during the Special Event period.

- ii. **Enabling Tariff** to Yes will open the Tariff Time Band pages which allows the user to program which hours are off peak, shoulder and peak in 12 hour blocks as Weekday AM, Weekday PM, Weekend AM, Weekend PM.

A third page allows the user to load the default for NSW or QLD or Custom.

- iii. **Enabling Night Mode** No (No function for W2W heat pumps)

- iv. **Enabling Timezone** to Yes will enable programmed local time zones to be implemented for Scheduler and Tariff functions above.

Press '**esc**' until page returns to the Menu Master.

CONNECTIONS - ELECTRICAL

D. **Input/output View** – Displays the actual readings as follows:

Hot Enter Temp:	Potable water temperature entering and leaving the condenser heat exchanger
Hot Leave Temp:	
Cold enter Temp:	Non-potable/chilled water temperature entering and leaving the evaporator heat exchanger
Cold Leave Temp:	
Compressor 1 –	Compressor temperature and pressure readings
Low Press:	
sat. suction:	
Suction:	
High Press:	
sat. condenser:	Hi and Lo pressure switches closed or open circuit
LP1 switch: OK	
HP1 switch: OK	Compressor overload activated
Comp O/Load: On/Off	
Unit Status State: On/Off	State of heat pump On/Off
Flow Switch: On/Off	Flow switch in non-potable/chilled water circuit activated (W2W heat pump)
B Flow Switch State: On/Off	Flow switch in non-potable/chilled water circuit activated (W2W heat pump)
Remote: On/Off	Remote control of heat pump activated
DRED Status: On/Off	Whether DRED control is enabled or not
Compressor 1: On/Off	Compressor status
Rev. valve: On/Off	Reversing valve status (NA)
Fan: On/Off	Fan status (A2W heat pump)
Circ. Pump: On/Off	Primary pump/s status (NB: both non-potable/chilled and potable water pumps are activated by same relay in W2W heat pump)
Circ. Pump B: On/Off	
Tank Temp:	Temperature at near bottom of tank
Building Flow Temp:	Temperature being delivered to building flow
Digital Inputs:	Displays the inputs (1-10)
Relay Outputs:	Displays the outputs (1-12)

CONNECTIONS - ELECTRICAL

- E. **Alarm History** – Displays the last 64 alarms (DLR 001 ~ DLR 064 screens) and the following information at time of alarm:
- Alarm (DLR) number, time, date, alarm type, event (start or stop)
- Alarms can be cleared by pressing the '**Alarm Bell**' key.
- F. Board Switch – Not used for W2W Heat Pumps
- G. **Service** – password: 0022
- a. Change display (do not use)
 - b. Information – software version information
 - c. Summer/Winter (not applicable to this product)
 - d. Working Hours:
 - i. Circ. Pump / reset counter
 - ii. Compressor 1 / reset counter
 - iii. Circ. Pump B / reset counter
 - e. BMS configuration (will time out after 5 minutes if no buttons pressed)

BMS2: (protocol, address, Baudrate, stopbits, parity)
BMS Card: (protocol, address, baudrate, stopbits, parity)
NET Configuration: (enable DHCP/AutoIP)
pGDX: (IP address)
Remote On/Off: (No)

Address: 1

- if BMS Interface Card Modbus on RS485 is used, change the address value based on the unique address set by the customer's network.
- For all other BMS interface cards, ignore this value.

Protocol: CAREL/Modbus

- choose **Modbus** only for BMS Interface Card Modbus on RS485.
- For all other BMS interface cards, choose **CAREL**.

Speed: 19200

- if BMS Interface Card Modbus on RS485 is used, change the speed value based on the customer's network.
- For all other BMS interface cards, use **19200** as speed.

CONNECTIONS - ELECTRICAL

- f. Service Settings
- i. Working Hour Set
 - ii. Prove Adjustment
 - iii. Thermoregulation (for multiple heat pump installation, change the no. of compressor and other settings from here.)

	Parameter	Sub Parameter	Main	Sub	
	C. Thermoregulation	Thermoregulation 01	Setpoint	65.0°C	Screen N/A
Differential			4.0°C	Screen N/A	
Dead band			0.5°C	Screen N/A	
Thermoregulation 04 (Pump A settings)		Flow proof delay		10s	Screen N/A
		Pump min run time		300s	Screen N/A
		Pump run on time		180s	Screen N/A
		Flow recheck del		180s	Screen N/A
		Flow switch A fitted		NO	Screen N/A
Thermoregulation 04a (Pump B settings)		Pump min run time		300s	Screen N/A
		Pump run on time		180s	Screen N/A
		PumpB > PumpA On		10s	Screen N/A
		PumpA > Comp On		5s	Screen N/A
		Comp > PumpA Off		60s	Screen N/A
Thermoregulation 04b (Pump B settings)		PumpA > PumpB Off		30s	Screen N/A
		Flow switch B fitted		Yes	Screen N/A
Thermoregulation 04d		Enable variable pump speed		NO	Screen N/A
Thermoregulation 04s (flow switch A & B slave)		Flow switch A fitted		Screen N/A	NO (single stage & multistage)
		Flow switch B fitted		Screen N/A	YES (single stage & multistage)
Thermoregulation 05		Blackout delay		15s	15s
		No. Compressors		Set as required (default 1)	Set as required (default 1)
		I am compressor		1 (screen N/A if 1 comp)	Set as required i.e. 2 - 6
		Compressor staging		Simultaneous	Screen N/A
Thermoregulation 05b		Controlling sensor		Tank	Screen N/A
		Compressor start after request (CFH) delay		20s	20s
		LP Alarm delay when comp starts in heat mode		30s	30s
Thermoregulation 06 (Enable unit On/Off)		By digital input		No	Screen N/A
	By supervisor		No	Screen N/A	
	By flow switch		No	Screen N/A	
	Enable D.R.E.D		No	Screen N/A	
Thermoregulation 07 (HP/LP Safety)	LP trip set		0.2 Bar	0.2 Bar	
	HP trip set		27.5 Bar	27.5 Bar	
Thermoregulation 08 (Anti-freeze safety for PHE evaporator (leave))	Low limit trip		5.0°C	5.0°C	
	Low limit reset		10.0°C	10.0°C	
Thermoregulation 09	Aux. Boost Fitted		YES	Screen N/A	

CONNECTIONS - ELECTRICAL

	% compressor in alarm to activate boost	50%	Screen N/A
	Boost act. Delay	5m	Screen N/A
Thermoregulation 11	Water temp. delta too big trip point	10.0°C	Screen N/A
	Leaving water Hi temp trip point	75.0°C	Screen N/A
	Leaving water Hi temp reset point	65.0°C	Screen N/A
Thermoregulation 12	Out Air sensor	None	None
	Tank temp sensor	NTC	None
	Bld temp sensor	NONE (default) (or NTC (6))	None
	UnitOfMeas	(C, bar)	(c, bar)
Thermoregulation 13	Enable BMS maximum power limit	NO	Screen N/A
	Enable BMS demand request (DRED)	NO	Screen N/A
Thermoregulation 18	Comp. config	Common (single unit with 1 screen) or Separate (all master slave configurations)	Screen N/A
	Fan plenum (screen N/A if No. Compressors = 1)	Common (single unit with 1 screen) or Separate (all master slave configurations)	Screen N/A
	User type	Commercial	Screen N/A
Thermoregulation 19	Frost protection	Enabled	Screen N/A
	Loop (A) active	(status i.e. yes or no)	Screen N/A
	Loop B active	(status i.e. yes or no)	Screen N/A
Thermoregulation 20	Frost protection setpoint	3.0°C	Screen N/A
	Differential	2.0°C	Screen N/A
	Delay Time	3m	Screen N/A
Thermoregulation 21	Antilegionella Enabled	Yes	Screen N/A
	Antilegionella Type	Fixed Period	Screen N/A
	Min duration	2 min	Screen N/A
	Max. amount of tries before alarm	3	Screen N/A
Thermoregulation 22	Activate every	06 days	Screen N/A
	Active from	10:00 – 16:00	Screen N/A
Thermoregulation 23	Manual initialisation of Antilegionella	No	Screen N/A
	Currently activated	(Status i.e. yes or No)	Screen N/A

iv. User DEV/Change PW1

g. Manual Manage

i. Circ pump (**Auto/off/on**)

ii. Comp enabled (**yes/no**)

iii. Reverse Vlv (**Auto/off/on**)

CONNECTIONS - ELECTRICAL

- iv. Circ pump B (**Auto**/off/on)
- v. Boost heat (**Auto**/off/on)
- vi. Reset off/on/auto over rides (**no**/yes)
- vii. Speed up times (**no**/yes)
- viii. Manual initialisation of anti Legionella (**no**/yes)

For more information, please refer to the service manual for heat pumps.

COMMISSIONING

To Fill And Turn On The Water Heater

The power supply to the water heater and controller must not be switched on until the water heater is filled with water and a satisfactory megger reading is obtained.

⚠ Warning: This water heater contains electronic equipment and 500 V insulation tests must only be conducted between actives and earth and between neutral and earth. An active to neutral test WILL damage the electronics.

Commissioning Procedure – Standalone Heat Pump Configuration

- Perform this procedure to commission a single (standalone) heat pump.
- If the system is comprised of multiple standalone heat pumps, perform this procedure for each heat pump.

- Open all of the hot water taps in the building (don't forget the showers) and supply cocks and valves in the system.
- Open the isolation valves fully on the cold, return and hot water branches to the storage tanks.
- Open the main cold water isolation valve.
- Air will be forced out of the taps.
- Close each tap as water flows freely from it.
- Check the pipe work for leaks.
- Switch on the electrical supply at the isolating switch to the water heater.
- Set time/tariff control if required.
- Reset alarms. Skip this step if there are no alarms.

If the water heater is full of cold water, the primary pumps will activate and heating will commence unless the system senses no flow or temperature below 5°C on the chilled water side, in which case the auxiliary boost will operate, if installed.

It is important to wait for five minutes after the heat pump has activated to ensure it continues to operate and is functioning correctly.

Note: The water heater may not turn on immediately when it is first switched on, if it is switched on within 20 minutes to 2 hours of it having been switched off at the isolating switch, or the heat pump has just completed a heating cycle. The water heater will wait until the conditions for start-up are favourable in order to protect the compressor from damage. This may take up to 20 minutes to 2 hours. The auxiliary booster (if installed) will operate instead of the heat pump if the ambient air temperature is less than the ambient sensor set point.

Explain to a responsible officer the functions and operation of the heat pump water heater. Upon completion of the installation and commissioning of the water heating system, leave this guide with the responsible officer.

Commissioning Procedure – Main/Sub Configuration

Perform this procedure if the system is comprised of multiple heat pumps to be configured for Master/Slave operation.

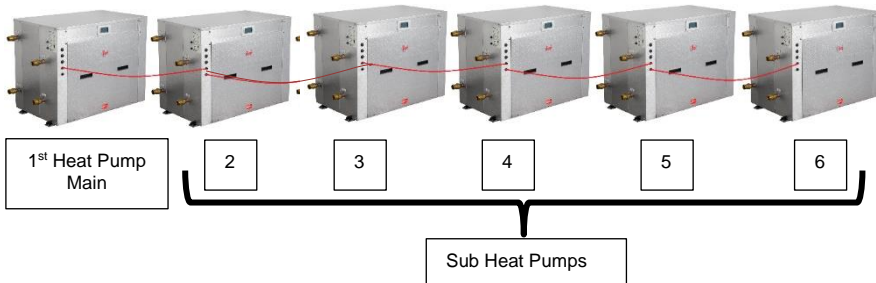
- Open all of the hot water taps in the building (don't forget the showers) and supply cocks and valves in the system.
- Open the isolation valves fully on the cold, return and hot water branches to the storage tanks.
- Open the main cold water isolation valve on the cold water line to the storage tanks.









Air will be forced out of the taps.

- Close each tap as water flows freely from it.
- Check the pipe work for leaks.

Before commencing the Master/Slave commissioning procedure, ensure the **Multiple Heat Pump Installation using LAN Cables – 16kW** - step 1 and step 2 have been completed as stated on **page 61**.

- Set-up for Main/Sub operation **MUST** be performed in the order shown.



1. Make sure all the LAN cables between heat pumps are disconnected.
2. On each heat pump in turn, go to the Service menu (Service>Service Settings- password 0022>Thermoregulation). Refer to **page 65** to see the chart for navigating Service menu and **page 70** for Thermoregulation section.
 - a. Whilst in the home screen on control panel, press Esc to enter the main menu.
 - b. Press Down  until "Service" Menu is displayed.
 - c. Press Enter .
 - d. Press Down  until "Service Settings" Menu is displayed.
 - e. Key in password "0022" and press Enter .
 - f. Press Down  until "Thermoregulation" is displayed.
 - g. Use Up  or Down  buttons to set values.
 - h. Press and release Enter  to move cursor to next line.
3. Make changes in Thermoregulation 12 first, followed by Thermoregulation 18 and 05.
4. Thermoregulation 12 - Change SUB heat pump 'Out air sensor', 'Storage tank temp' sensor and 'Building flow temp' sensor parameters to 'NONE'.
5. Thermoregulation 18 – change MAIN and SUB heat pump "Comp.Config" to SEPARATE and "User Type" to COMMERCIAL
6. Thermoregulation 05 –
 - a. Set "No of Compressors" to the TOTAL number of heat pumps in the array (2-6).
 - b. Set "I am Compressor.." as required for each heat pump with MAIN being 1 and each SUB in turn (2-6).
 - c. Set "Compressor Staging" depending on application.
 - i. If no staging is required, set each heat pump as SIMULTANEOUS.
 - ii. If staging is required set Main and Sub heat pumps to STAGGERED.
 - d. Set "Controlling Sensor" to TANK for Main heat pump, and to ENTERING WATER A for Sub heat pumps.

Main Parameter	Sub Parameter	While setting Main unit	While setting Sub unit
Thermoregulation 12	Out Air sensor	NTC	NONE
	Tank Temp sensor	NTC	NONE
	Bld Temp sensor	NTC	NONE
	Unit OF Measure:	(C, bar)	(C, bar)
Thermoregulation 18	Comp. Config:	SEPARATE	SEPARATE
	User type:	COMMERCIAL	COMMERCIAL
Thermoregulation 05	Blackout delay	15s	15s
	No of Compressors	Set as required. Maximum 6 (default 1)	Set as required. Maximum 6 (default 1)
	I am Compressor	1	Set as required 2-6 (default 1)
	Compressor staging	SIMULTANEOUS or STAGGERED	SIMULTANEOUS or STAGGERED
	Controlling sensor	Tank	Entering Water A



Parameters will appear as below:

Main Parameter	Sub Parameter	After setting Main unit (#1)	After setting Sub unit (#2)
Thermoregulation 12	Out Air sensor	NTC	NONE
	Tank Temp sensor	NTC	NONE
	Bld Temp sensor	NTC	NONE
	Unit OF Measure:	(C, bar)	(C, bar)
Thermoregulation 18	Comp. Config:	SEPARATE	Screen N/A
	User type:	COMMERCIAL	
Thermoregulation 05	Blackout delay	15s	15s
	No of Compressors	2-6	2
	I am Compressor	1	2
	Compressor staging	SIMULTANEOUS or STAGGERED as set	Screen N/A
	Controlling sensor	Tank	Screen N/A

Compressor Staging and Rotation (Staggered operation)

If “Compressor Staging” has been set to STAGGERED, the differential will need to be set. Standard differential is 4K. The recommended differential for multiple heat pump staging is as follows depending on the number of heat pumps:

Number of Heat Pumps	Recommended Differential	Differential for each stage
2	5	2.5
3	7.5	2.5
4	10	2.5
5	12.5	2.5
6	15	2.5

Press Up  or Down  to scroll to Thermoregulation 01 and change differential as required.

7. When all settings have been set, switch OFF all the heat pumps.
8. Interconnect the heat pumps as shown above by using the LAN cables. Determine the 1st heat pump as MAIN. Route the cables neatly to prevent damage and trip hazards. Do not route across access panels.

Notes

- Any of the two LAN connections will be acceptable.
 - Tank Temperature Sensor and Building Temperature Sensor for the MAIN heat pump must be connected, otherwise the heat pumps will not operate due to fault. There is no need to connect tank and building temperature sensors for SUB heat pumps.
9. Switch ON all the heat pumps.
 10. If the water heaters are full of cold water, the pumps will activate on each water heater and heating will commence unless the evaporator low temperature sensor is below the set point, in which case the auxiliary boost will operate, if installed.

It is important to wait for five minutes after each heat pump has activated to ensure it continues to operate and is functioning correctly.

Note: The heat pump may not turn on immediately when it is first switched on, if it is switched on within 20 minutes to 2 hours of it having been switched off at the isolating switch, or the heat pump has just completed a heating cycle. The heat pump will wait until the conditions for start-up are favourable in order to protect the compressor from damage. This may take up to 20 minutes to 2 hours. The auxiliary booster (if installed) will operate instead of the heat pump if the ambient air temperature is less than the ambient sensor set point.

Explain to a responsible officer the functions and operation of the heat pumps. Upon completion of the installation and commissioning of the water heating system, leave this guide with the responsible officer.

Commissioning Procedure- BMS Configuration

Before commencing the commissioning procedure, ensure the '**Building Management Systems (BMS/BAS)**' installation procedure has been completed as stated on **page 61**.

- If the system is comprised of single or multiple standalone heat pumps, perform this procedure for each heat pump. Each heat pump will have its own BMS card.
- If the system is comprised of multiple heat pumps for Main/Sub operation, perform this procedure for only Main heat pump. Only Main heat pump will have a BMS card and the sub heat pumps will be connected via LAN cable.

Configure BMS settings from the display of the heat pump.

After commissioning the Main heat pump, go to the Service menu (Service- password 0022>BMS config). Refer to **page 65** to see the chart for navigating Service menu.

1. Configuration: BMS Interface Card **Modbus on RS485**

1. Go to BMS configuration (will time out after 5 minutes if no buttons pressed)

Change the settings for BMS configuration from the display menu as mentioned below.

Address: Change the address value based on the unique address set by the customer's network.

Protocol: Choose option 'Modbus'

Speed: Change the speed value based on the customer's network.

2. Parameter table is provide for customers to follow for further configuration to customer's network on **page 81**.

2. Configuration: BMS Interface card **BACnet MS-TP**

1. Go to BMS configuration (will time out after 5 minutes if no buttons pressed)

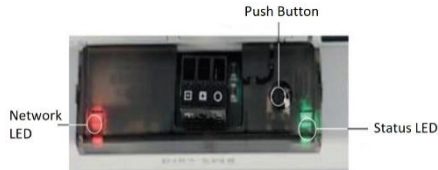
Change the settings for BMS configuration from the display menu as mentioned below.

Address: No change required (address is irrelevant for this card).

Protocol: CAREL

Speed: 19200 (this value is set from factory to communicate between heat pump and BMS card)

2. Open the heat pump enclosure and check the BMS card.



The BACnet MS-TP card features a button (PUSHBUTTON) and two indicator lights (STATUS LED and NETWORK LED).

Functions of the Push Button: When starting up the BACnet MS-TP, this is used to select, for network communication, whether to use the factory parameters or the user parameters.

In normal operation, reboots BACnet MS-TP without needing to disconnect the power supply.

Status LED: indicates the status of communication with the heat pump and the card. Once the starting sequence has been completed, the Status LED flashes to indicate the quality of communication.

- a. If Status LED flashes green, then communication with the BACnet MS-TP is OK.
- b. If LED is red or green-red-green, then the communication is not established. In that case, check the BMS configuration.

Network LED: The Network LED (left) indicates the status of communication with customer's network. Once the starting sequence has been completed, the Network LED flashes to indicate the quality of communication with customer's network.

- a. If Network LED flashes green with occasional red flashes then communication is OK.
- b. If Network LED flashes green and red ON together (BACnet MS/TP meaning: continuous Poll-For-Master): communication is not established (connection problems, or no network device found); this may depend on electrical connection difficulties or communication settings that are not compatible with the other network devices connected.

3. For further configuration of BACnet MS-TP card, please follow the "BACnet MS-TP Configuration Guide".
4. Parameter table is provided for customers to follow for further configuration to customer's network on **page 81**.

3. Configuration: BMS Interface card **BACnet TCP/IP Ethernet**

1. Go to BMS configuration (will time out after 5 minutes if no buttons pressed)

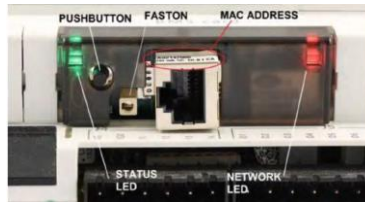
Change the settings for BMS configuration from the display menu as mentioned below.

Address: No change required (address is irrelevant for this card).

Protocol: CAREL

Speed: 19200 (this value is set from factory to communicate between heat pump and BMS card)

2. Open the heat pump enclosure and check the BMS card.



The BACnet TCP/IP Ethernet card features a button (PUSHBUTTON) and two indicator lights (STATUS LED and NETWORK LED).

Functions of the Push Button: When starting up the TCP/IP Ethernet card, this is used to select, for network communication, whether to use the factory parameters or the user parameters. In normal operation, reboots TCP/IP Ethernet card without needing to disconnect the power supply.

Status LED: indicates the status of communication with the heat pump and the card. Once the starting sequence has been completed, the Status LED flashes to indicate the quality of communication.

- a. If Status LED flashes green or green steady, then communication with the BACnet TCP/IP Ethernet card is OK.
- b. If LED is red or green-red-green, then the communication is not established. In that case, check the BMS configuration.

Network LED: Displays the status of the physical network connection (Ethernet connection signals), regardless of whether the network parameters are correct; usually this must be green and flash when data is transmitted/received.

3. For further configuration of BACnet TCP/IP Ethernet card, please follow the “BACnet TCP/IP Ethernet Configuration Guide”.
4. Parameter table is provided for customers to follow for further configuration to customer’s network on **page 81**.

Refer to the parameter tables below for BMS:

COIL:

Index	Size	Variable Name	Variable Description	Data Type	Default Value	Min	Max	UoM	Direction
1	1	DummyBol_01	LP switch (raw) - Din01	Bool				NoUnits	Read
2	1	DummyBol_02	HP switch (raw) - Din02	Bool				NoUnits	Read
3	1	DummyBol_03	Flow switch Hot side (raw) - Din03	Bool				NoUnits	Read
4	1	DummyBol_04	Compressor Overload (raw) - Din04	Bool				NoUnits	Read
5	1	DummyBol_05	Remote on/off (raw) - Din05	Bool				NoUnits	Read
6	1	DummyBol_06	D.R.E.D. activate signal (raw) - Din06	Bool				NoUnits	Read
7	1	DummyBol_07	Outdoor Fan Overload (raw) - Din07	Bool				NoUnits	Read
8	1	DummyBol_08	Flow switch Cold side (raw) - Din08	Bool				NoUnits	Read
9	1	DummyBol_09	Not used - Din09	Bool				NoUnits	Read
10	1	DummyBol_10	Not used - Din10	Bool				NoUnits	Read
19	1	Dout_01	Compressor - Relay Output 01	Bool				NoUnits	Read
20	1	Dout_02	Reversing Valve / Hot Gas solenoid - Relay Output 02	Bool				NoUnits	Read
21	1	Dout_03	Outdoor Fan - Relay Output 03	Bool				NoUnits	Read
22	1	Dout_04	Outdoor Fan High speed - Relay Output 04	Bool				NoUnits	Read
23	1	Dout_05	Pump (cold side) - Relay Output 05	Bool				NoUnits	Read
24	1	Dout_06	Alarm Output - Relay Output 06	Bool				NoUnits	Read
25	1	Dout_07	Pump (hot side) - Relay Output 07	Bool				NoUnits	Read
26	1	Dout_08	Boost Heat Output - Relay Output 08	Bool				NoUnits	Read
27	1	Dout_09	Pool / Spa changeover - Relay Output 09	Bool				NoUnits	Read
28	1	Dout_10	Not used - Relay Output 10	Bool				NoUnits	Read
29	1	Dout_11	Not used - Relay Output 11	Bool				NoUnits	Read
30	1	Dout_12	Not used - Relay Output 12	Bool				NoUnits	Read
31	1	Dout_13	Not used - Relay Output 13	Bool				NoUnits	Read
32	1	Pmp	Circulating Pump (Hot side)	Bool				NoUnits	Read
33	1	PmpB	Circulating Pump for Source water - cold side	Bool				NoUnits	Read
35	1	Comp1_En	remote / maintenance enable of compressor 1	Bool	TRUE			NoUnits	ReadWrite
36	1	Comp2_En	remote / maintenance enable of compressor 2	Bool	TRUE			NoUnits	ReadWrite
37	1	Comp3_En	remote / maintenance enable of compressor 3	Bool	TRUE			NoUnits	ReadWrite
38	1	Comp4_En	remote / maintenance enable of compressor 4	Bool	TRUE			NoUnits	ReadWrite

Index	Size	Variable Name	Variable Description	Data Type	Default Value	Min	Max	UoM	Direction
39	1	Comp5_En	remote / maintenance enable of compressor 5	Bool				NoUnits	ReadWrite
40	1	Comp6_En	remote / maintenance enable of compressor 6	Bool				NoUnits	ReadWrite
41	1	DeviceStatusComp1	Actual status of compressor 1	Bool				NoUnits	Read
42	1	DeviceStatusComp2	Actual status of compressor 2	Bool				NoUnits	Read
43	1	DeviceStatusComp3	Actual status of compressor 3	Bool				NoUnits	Read
44	1	DeviceStatusComp4	Actual status of compressor 4	Bool				NoUnits	Read
45	1	DeviceStatusComp5	Actual status of compressor 5	Bool				NoUnits	Read
46	1	DeviceStatusComp6	Actual status of compressor 6	Bool				NoUnits	Read
49	1	UnitOn	Unit On status: TRUE = Unit ON	Bool				NoUnits	Read
50	1	OnOffUnitMng.BmsOnOff	Unit On/Off by BMS (if enabled)	Bool				NoUnits	ReadWrite
51	1	AlarmMng.AlarmResByBms	Alarm reset by BMS	Bool				NoUnits	ReadWrite
52	1	En_trf	Enable Tariff	Bool	TRUE			NoUnits	ReadWrite
53	1	DeviceStatusRevVlv1	Actual status of Reverse Valve / Hot Gas Solenoid 1	Bool				NoUnits	Read
54	1	DeviceStatusRevVlv2	Actual status of Reverse Valve / Hot Gas Solenoid 2	Bool				NoUnits	Read
55	1	DeviceStatusRevVlv3	Actual status of Reverse Valve / Hot Gas Solenoid 3	Bool				NoUnits	Read
56	1	DeviceStatusRevVlv4	Actual status of Reverse Valve / Hot Gas Solenoid 4	Bool				NoUnits	Read
57	1	DeviceStatusRevVlv5	Actual status of Reverse Valve / Hot Gas Solenoid 5	Bool				NoUnits	Read
58	1	DeviceStatusRevVlv6	Actual status of Reverse Valve / Hot Gas Solenoid 6	Bool				NoUnits	Read
60	1	En_Elect_Heat	(Electric) Boost element is installed	Bool	TRUE			NoUnits	ReadWrite
61	1	BMS_Boost	Boost heat activated by BMS	Bool				NoUnits	ReadWrite
62	1	En_BMS_demand	Enable BMS demand capacity	Bool				NoUnits	ReadWrite
63	1	En_PwrLim	Enable power limiting	Bool				NoUnits	ReadWrite
64	1	EnSchedOnOff	Enable Scheduler	Bool				NoUnits	ReadWrite
65	1	Special_act	Special timezone active	Bool				NoUnits	ReadWrite
66	1	LowAmbMode	Enable Setback offset	Bool				NoUnits	Read
67	1	En_NightMode	Enable Night Mode	Bool				NoUnits	ReadWrite
68	1	Night_act	Night Mode active	Bool				NoUnits	ReadWrite
69	1	En_FrostSaf	Enable frost protection safety	Bool	TRUE			NoUnits	ReadWrite
70	1	Pmp_HR_Res	Pump hour run reset	Bool				NoUnits	ReadWrite
71	1	PmpB_HR_Res	Pump B hour run reset	Bool				NoUnits	ReadWrite
72	1	Comp_HR_Res1	Compressor 1 Hour run reset	Bool				NoUnits	ReadWrite

Index	Size	Variable Name	Variable Description	Data Type	Default Value	Min	Max	UoM	Direction
73	1	Comp_HR_Res2	Compressor 2 Hour run reset	Bool				NoUnits	ReadWrite
74	1	Comp_HR_Res3	Compressor 3 Hour run reset	Bool				NoUnits	ReadWrite
75	1	Comp_HR_Res4	Compressor 4 Hour run reset	Bool				NoUnits	ReadWrite
76	1	Comp_HR_Res5	Compressor 5 Hour run reset	Bool				NoUnits	ReadWrite
77	1	Comp_HR_Res6	Compressor 6 Hour run reset	Bool				NoUnits	ReadWrite
78	1	OdorFanHR_Res1	Outdoor fan 1 hour run reset	Bool				NoUnits	ReadWrite
79	1	OdorFanHR_Res2	Outdoor fan 2 hour run reset	Bool				NoUnits	ReadWrite
80	1	OdorFanHR_Res3	Outdoor fan 3 hour run reset	Bool				NoUnits	ReadWrite
81	1	OdorFanHR_Res4	Outdoor fan 4 hour run reset	Bool				NoUnits	ReadWrite
82	1	OdorFanHR_Res5	Outdoor fan 5 hour run reset	Bool				NoUnits	ReadWrite
83	1	OdorFanHR_Res6	Outdoor fan 6 hour run reset	Bool				NoUnits	ReadWrite
84	1	Flw_SW_Present	Flow switch present	Bool	TRUE			NoUnits	ReadWrite
85	1	EnLWTCtrl	Enable Leaving water temp control	Bool				NoUnits	ReadWrite
86	1	En_CompLowAmb	Keep compressor enabled in low ambient condition	Bool	TRUE			NoUnits	ReadWrite
87	1	En_PoolSpa	Pool/Spa Installed	Bool				NoUnits	ReadWrite
119	1	GlbAlrm	Global alarms (at least one active alarm)	Bool				NoUnits	Read
120	1	Al_Pr_b_01.Trigger	Probe 01 Alarm - Alarm status Trigger	Bool				NoUnits	Read
121	1	Al_Pr_b_02.Trigger	Probe 02 Alarm - Alarm status Trigger	Bool				NoUnits	Read
122	1	Al_Pr_b_03.Trigger	Probe 03 Alarm - Alarm status Trigger	Bool				NoUnits	Read
123	1	Al_Pr_b_04.Trigger	Probe 04 Alarm - Alarm status Trigger	Bool				NoUnits	Read
124	1	Al_Pr_b_05.Trigger	Probe 05 Alarm - Alarm status Trigger	Bool				NoUnits	Read
125	1	Al_Pr_b_06.Trigger	Probe 06 Alarm - Alarm status Trigger	Bool				NoUnits	Read
126	1	Al_Pr_b_07.Trigger	Probe 07 Alarm - Alarm status Trigger	Bool				NoUnits	Read
127	1	Al_Pr_b_08.Trigger	Probe 08 Alarm - Alarm status Trigger	Bool				NoUnits	Read
128	1	Al_Pr_b_09.Trigger	Probe 09 Alarm - Alarm status Trigger	Bool				NoUnits	Read
129	1	Al_Pr_b_10.Trigger	Probe 10 Alarm - Alarm status Trigger	Bool				NoUnits	Read
130	1	Al_Pr_b_11.Trigger	Probe 11 Alarm - Alarm status Trigger	Bool				NoUnits	Read
131	1	Al_Pr_b_12.Trigger	Probe 12 Alarm - Alarm status Trigger	Bool				NoUnits	Read
132	1	DeviceAlarmComp1	Alarm Comp 1	Bool				NoUnits	Read
133	1	DeviceAlarmComp2	Alarm Comp 2	Bool				NoUnits	Read
134	1	DeviceAlarmComp3	Alarm Comp 3	Bool				NoUnits	Read
135	1	DeviceAlarmComp4	Alarm Comp 4	Bool				NoUnits	Read
136	1	DeviceAlarmComp5	Alarm Comp 5	Bool				NoUnits	Read
137	1	DeviceAlarmComp6	Alarm Comp 6	Bool				NoUnits	Read
138	1	Comp1OL	Compressor 1 O/L	Bool				NoUnits	Read
139	1	Comp2OL	Compressor 2 O/L	Bool				NoUnits	Read
140	1	Comp3OL	Compressor 3 O/L	Bool				NoUnits	Read
141	1	Comp4OL	Compressor 4 O/L	Bool				NoUnits	Read
142	1	Comp5OL	Compressor 5 O/L	Bool				NoUnits	Read

Index	Size	Variable Name	Variable Description	Data Type	Default Value	Min	Max	UoM	Direction
143	1	Comp6OL	Compressor 6 O/L	Bool				NoUnits	Read
144	1	TDelta_AL1	Temperature Delta Alarm 1 (Hot side)	Bool				NoUnits	Read
145	1	TDelta_AL2	Temperature Delta Alarm 2 (Hot side)	Bool				NoUnits	Read
146	1	TDelta_AL3	Temperature Delta Alarm 3 (Hot side)	Bool				NoUnits	Read
147	1	TDelta_AL4	Temperature Delta Alarm 4 (Hot side)	Bool				NoUnits	Read
148	1	TDelta_AL5	Temperature Delta Alarm 5 (Hot side)	Bool				NoUnits	Read
149	1	TDelta_AL6	Temperature Delta Alarm 6 (Hot side)	Bool				NoUnits	Read
150	1	TDeltaB_AL1	Temperature Delta Alarm 1 (Cool side)	Bool				NoUnits	Read
151	1	TDeltaB_AL2	Temperature Delta Alarm 2 (Cool side)	Bool				NoUnits	Read
152	1	TDeltaB_AL3	Temperature Delta Alarm 3 (Cool side)	Bool				NoUnits	Read
153	1	TDeltaB_AL4	Temperature Delta Alarm 4 (Cool side)	Bool				NoUnits	Read
154	1	TDeltaB_AL5	Temperature Delta Alarm 5 (Cool side)	Bool				NoUnits	Read
155	1	TDeltaB_AL6	Temperature Delta Alarm 6 (Cool side)	Bool				NoUnits	Read
156	1	AI_LWT_Hi.Trigger	High Leaving Water Temperature Alarm - Alarm status Trigger	Bool				NoUnits	Read

Holding Registers:

Index	Size	Variable Name	Variable Description	Data Type	Default Value	Min	Max	UoM	Direction
1	1	BMS_DummyReal_01	Entering Water temperature (Hot side) - Ain01	Int				NoUnits	Read
2	1	BMS_DummyReal_02	Leaving Water temperature (Hot side) - Ain02	Int				NoUnits	Read
3	1	BMS_DummyReal_03	Outdoor coil temperature - Ain03	Int				NoUnits	Read
4	1	BMS_DummyReal_04	Suction temperature - Ain04	Int				NoUnits	Read
5	1	BMS_DummyReal_05	Compressor Discharge temperature - Ain05	Int				NoUnits	Read
6	1	BMS_DummyReal_06	Suction Pressure - Ain06	Int				NoUnits	Read
7	1	BMS_DummyReal_07	Discharge Pressure - Ain07	Int				NoUnits	Read
8	1	BMS_DummyReal_08	Outside Air Temperature - Ain08	Int				NoUnits	Read
9	1	BMS_DummyReal_09	Tank Temperature - Ain09	Int				NoUnits	Read
10	1	BMS_DummyReal_10	Building Supply Temperature - Ain10	Int				NoUnits	Read
11	1	BMS_DummyReal_11	Entering Water temperature (Cold side) - Ain11	Int				NoUnits	Read
12	1	BMS_DummyReal_12	Leaving Water temperature (Cold side) - Ain12	Int				NoUnits	Read
13	1	BMS_Aout_01	Outdoor Fan Speed - Aout01	Int				NoUnits	Read
14	1	BMS_Aout_02	Compressor Speed or Valve position - Aout02	Int				NoUnits	Read
15	1	BMS_Aout_03	Pump Speed - Aout03	Int				NoUnits	Read
16	1	BMS_Aout_04	Modulating Output 04	Int				NoUnits	Read
17	1	BMS_Aout_05	Modulating Output 05	Int				NoUnits	Read
18	1	BMS_Aout_06	Modulating Output 06	Int				NoUnits	Read
23	1	BMS_CtrlT	Current Controlling Temperature	Int				NoUnits	Read
24	1	BMS_OAT	Outside Air Temperature	Int				NoUnits	Read
25	1	BMS_EW_T	Entering Water Temperature (Hot side)	Int				NoUnits	Read
26	1	BMS_LW_T	Leaving Water Temperature (Hot side)	Int				NoUnits	Read
27	1	BMS_CondT	Condenser Temperature	Int				NoUnits	Read
28	1	BMS_setP_active	Current Active Setpoint	Int				NoUnits	Read
29	1	BMS_diff_active	Current Active Differential	Int				NoUnits	Read
30	1	BMS_SetP	Setpoint (non Pool / Spa)	Int				NoUnits	ReadWrite
31	1	BMS_Ctrl_DB	Control Dead Band	Int				NoUnits	ReadWrite
32	1	BMS_PB	Proportional Band / Differential	Int				NoUnits	ReadWrite
33	1	BMS_EW_TB	Entering Water Temperature (Cold side)	Int				NoUnits	ReadWrite
34	1	BMS_LW_TB	Leaving Water Temperature (Cold side)	Int				NoUnits	Read
35	1	BMS_TankT	Tank Temperature	Int				NoUnits	Read
36	1	BMS_Bld_SupplyT	Building Supply Temperature	Int				NoUnits	Read
39	1	BMS_WaterDelta	Entering Vs Leaving water temperature delta	Int				NoUnits	Read
50	1	BMS_LW_HiTrip	Leave Water Hi Trip Temperature	Int				NoUnits	Read
51	1	BMS_LW_HiRes	Leave Water Hi Reset Temperature	Int				NoUnits	Read
52	1	BMS_LW_LoTrip	Leave Water Lo Trip Temperature	Int				NoUnits	Read
53	1	BMS_LW_LoRes	Leave Water Lo Reset Temperature	Int				NoUnits	Read
54	1	BMS_EW_LoTrip	Entering Water Lo Trip Temperature	Int				NoUnits	Read

Index	Size	Variable Name	Variable Description	Data Type	Default Value	Min	Max	UoM	Direction
55	1	BMS_EW_LoReset	Entering Water Lo Reset Temperature	Int				NoUnits	Read
56	1	BMS_Comp_HiTrip	Compressor Discharge Temperature Trip	Int				NoUnits	Read
60	1	BMS_BLDC_spd	BLDC Compressor speed %	Int				NoUnits	Read
65	1	BMS_EEV_pos	EEV speed %	Int				NoUnits	Read
100	1	BMS_tfr_0_set	Off Peak setpoint (target) temperature	Int				NoUnits	ReadWrite
101	1	BMS_tfr_1_set	Shoulder setpoint (target) temperature	Int				NoUnits	ReadWrite
102	1	BMS_tfr_2_set	Peak setpoint (target) temperature	Int				NoUnits	ReadWrite
103	1	BMS_tfr_3_set	Special Day setpoint (target) temperature	Int				NoUnits	ReadWrite
104	1	BMS_tfr_0_diff	Off Peak differential (on to off difference)	Int				NoUnits	ReadWrite
105	1	BMS_tfr_1_diff	Shoulder differential (on to off difference)	Int				NoUnits	ReadWrite
106	1	BMS_tfr_2_diff	Peak differential (on to off difference)	Int				NoUnits	ReadWrite
107	1	BMS_tfr_3_diff	Special Day differential (on to off difference)	Int				NoUnits	ReadWrite
108	1	BMS_DRED_SetP_Offset	Setpoint Offset when DRED active	Int				NoUnits	ReadWrite
109	1	BMS_DRED_SetP_Abs	Setpoint when DRED active	Int				NoUnits	ReadWrite
110	1	BMS_DRED_diff_Offset	Differential Offset when DRED active	Int				NoUnits	ReadWrite
111	1	BMS_DRED_diff_Abs	Differential when DRED active	Int				NoUnits	ReadWrite
112	1	BMS_SetbackLoLim	Low Ambient Low Limit Setpoint	Int				NoUnits	ReadWrite
113	1	BMS_SetbackUpLim	Low Ambient High Limit Setpoint	Int				NoUnits	ReadWrite
114	1	BMS_SetbackDelta	Low Ambient Setpoint delta from high point to low point	Int				NoUnits	ReadWrite
115	1	BMS_OAT_Lo	Low Ambient - Outside Air temp to lock out compressor operation (if selected)	Int				NoUnits	ReadWrite
116	1	BMS_OAT_LoDiff	Low Ambient - Outside Air differential to lock out compressor operation (if selected)	Int				NoUnits	ReadWrite
117	1	BMS_PoolSetP	Pool mode Setpoint	Int				NoUnits	ReadWrite
118	1	BMS_PoolDiff	Pool mode differential	Int				NoUnits	ReadWrite
119	1	BMS_SpaSetP	Spa mode Setpoint	Int				NoUnits	ReadWrite
120	1	BMS_SpaDiff	Spa mode differential	Int				NoUnits	ReadWrite
121	1	BMS_FrostSetp	Frost Activation setpoint	Int				NoUnits	ReadWrite
122	1	BMS_FrostDiff	Frost Activation differential	Int				NoUnits	ReadWrite
167	1	BMS_PumpSpeedMax	Maximum pump speed if variable speed pump control enabled	Int				NoUnits	ReadWrite
168	1	BMS_PumpSpeedMin	Minimum pump speed if variable speed pump control enabled	Int				NoUnits	ReadWrite
169	1	BMS_LWT_PB	speed proportional band if Leaving water control enabled	Int				NoUnits	ReadWrite
170	1	BMS_LWT_Ti	speed Integral time if Leaving water control enabled	Int				NoUnits	ReadWrite
171	1	BMS_LWT_Td	speed derivative time if Leaving water control enabled	Int				NoUnits	ReadWrite
173	1	BMS_PoolPrb	Pool probe temperature - Pool / Spa mode	Int				NoUnits	ReadWrite

Index	Size	Variable Name	Variable Description	Data Type	Default Value	Min	Max	UoM	Direction
174	1	BMS_SpaPrb	Spa probe temperature - Pool / Spa mode	Int				NoUnits	ReadWrite
175	1	BMS_LP_P_set	Low Pressure trip point	Int				NoUnits	ReadWrite
176	1	BMS_HP_P_set	High Pressure trip point	Int				NoUnits	ReadWrite
177	1	BMS_De_Ice_init	de-ice initialisation temperature	Int				NoUnits	ReadWrite
178	1	BMS_De_Ice_Thrsh	de-ice de-activate temperature	Int				NoUnits	ReadWrite
179	1	BMS_MaxDemandLim	Maximum demand limit if enabled	Int				NoUnits	ReadWrite
5002	1	tfr_00	type of tariff - timeband 0 weekday	Int		0	2	NoUnits	ReadWrite
5003	1	tfr_01	type of tariff - timeband 1 weekday	Int		0	2	NoUnits	ReadWrite
5004	1	tfr_02	type of tariff - timeband 2 weekday	Int		0	2	NoUnits	ReadWrite
5005	1	tfr_03	type of tariff - timeband 3 weekday	Int		0	2	NoUnits	ReadWrite
5006	1	tfr_04	type of tariff - timeband 4 weekday	Int		0	2	NoUnits	ReadWrite
5007	1	tfr_05	type of tariff - timeband 5 weekday	Int		0	2	NoUnits	ReadWrite
5008	1	tfr_06	type of tariff - timeband 6 weekday	Int		0	2	NoUnits	ReadWrite
5009	1	tfr_07	type of tariff - timeband 7 weekday	Int		0	2	NoUnits	ReadWrite
5010	1	tfr_08	type of tariff - timeband 8 weekday	Int		0	2	NoUnits	ReadWrite
5011	1	tfr_09	type of tariff - timeband 9 weekday	Int		0	2	NoUnits	ReadWrite
5012	1	tfr_10	type of tariff - timeband 10 weekday	Int		0	2	NoUnits	ReadWrite
5013	1	tfr_11	type of tariff - timeband 11 weekday	Int		0	2	NoUnits	ReadWrite
5014	1	tfr_12	type of tariff - timeband 12 weekday	Int		0	2	NoUnits	ReadWrite
5015	1	tfr_13	type of tariff - timeband 13 weekday	Int		0	2	NoUnits	ReadWrite
5016	1	tfr_14	type of tariff - timeband 14 weekday	Int		0	2	NoUnits	ReadWrite
5017	1	tfr_15	type of tariff - timeband 15 weekday	Int		0	2	NoUnits	ReadWrite
5018	1	tfr_16	type of tariff - timeband 16 weekday	Int		0	2	NoUnits	ReadWrite
5019	1	tfr_17	type of tariff - timeband 17 weekday	Int		0	2	NoUnits	ReadWrite
5020	1	tfr_18	type of tariff - timeband 18 weekday	Int		0	2	NoUnits	ReadWrite
5021	1	tfr_19	type of tariff - timeband 19 weekday	Int		0	2	NoUnits	ReadWrite
5022	1	tfr_20	type of tariff - timeband 20 weekday	Int		0	2	NoUnits	ReadWrite
5023	1	tfr_21	type of tariff - timeband 21 weekday	Int		0	2	NoUnits	ReadWrite
5024	1	tfr_22	type of tariff - timeband 22 weekday	Int		0	2	NoUnits	ReadWrite
5025	1	tfr_23	type of tariff - timeband 23 weekday	Int		0	2	NoUnits	ReadWrite
5026	1	trfw_00	type of tariff - timeband 0 week end	Int	0	0	2	NoUnits	ReadWrite
5027	1	trfw_01	type of tariff - timeband 1 week end	Int		0	2	NoUnits	ReadWrite
5028	1	trfw_02	type of tariff - timeband 2 week end	Int		0	2	NoUnits	ReadWrite
5029	1	trfw_03	type of tariff - timeband 3 week end	Int		0	2	NoUnits	ReadWrite
5030	1	trfw_04	type of tariff - timeband 4 week end	Int		0	2	NoUnits	ReadWrite
5031	1	trfw_05	type of tariff - timeband 5 week end	Int		0	2	NoUnits	ReadWrite
5032	1	trfw_06	type of tariff - timeband 6 week end	Int		0	2	NoUnits	ReadWrite
5033	1	trfw_07	type of tariff - timeband 7 week end	Int		0	2	NoUnits	ReadWrite
5034	1	trfw_08	type of tariff - timeband 8 week end	Int		0	2	NoUnits	ReadWrite

Index	Size	Variable Name	Variable Description	Data Type	Default Value	Min	Max	UoM	Direction
5035	1	trfw_09	type of tariff - timeband 9 week end	Int		0	2	NoUnits	ReadWrite
5036	1	trfw_10	type of tariff - timeband 10 week end	Int	0	0	2	NoUnits	ReadWrite
5037	1	trfw_11	type of tariff - timeband 11 week end	Int	0	0	2	NoUnits	ReadWrite
5038	1	trfw_12	type of tariff - timeband 12 week end	Int	0	0	2	NoUnits	ReadWrite
5039	1	trfw_13	type of tariff - timeband 13 week end	Int	0	0	2	NoUnits	ReadWrite
5040	1	trfw_14	type of tariff - timeband 14 week end	Int	0	0	2	NoUnits	ReadWrite
5041	1	trfw_15	type of tariff - timeband 15 week end	Int	0	0	2	NoUnits	ReadWrite
5042	1	trfw_16	type of tariff - timeband 16 week end	Int	0	0	2	NoUnits	ReadWrite
5043	1	trfw_17	type of tariff - timeband 17 week end	Int	0	0	2	NoUnits	ReadWrite
5044	1	trfw_18	type of tariff - timeband 18 week end	Int	0	0	2	NoUnits	ReadWrite
5045	1	trfw_19	type of tariff - timeband 19 week end	Int	0	0	2	NoUnits	ReadWrite
5046	1	trfw_20	type of tariff - timeband 20 week end	Int	0	0	2	NoUnits	ReadWrite
5047	1	trfw_21	type of tariff - timeband 21 week end	Int	0	0	2	NoUnits	ReadWrite
5048	1	trfw_22	type of tariff - timeband 22 week end	Int	0	0	2	NoUnits	ReadWrite
5049	1	trfw_23	type of tariff - timeband 23 week end	Int	0	0	2	NoUnits	ReadWrite
5050	1	tfr_active	current active Tariff	Int				NoUnits	Read
5104	1	GeneralMng.Year	Actual year	UInt		0	99	NoUnits	Read
5105	1	GeneralMng.Month	Actual month	UInt		0	99	NoUnits	Read
5106	1	GeneralMng.Day	Actual day	UInt		0	99	NoUnits	Read
5107	1	GeneralMng.Hour	Actual hour	UInt		0	99	NoUnits	Read
5108	1	GeneralMng.Minute	Actual minute	UInt		0	99	NoUnits	Read
5109	1	Mode	mode of unit (1=heat only 2=cool only 3=Auto)	Int	3	1	3	NoUnits	ReadWrite
5110	1	BMS_BMS_demand	BMS demand capacity	Int				NoUnits	ReadWrite
5111	1	BMS_BMS_PwrReq	BMS Maximum Power Request	Int				NoUnits	ReadWrite
5112	1	BMS_MaxPwrOffline	Maximum power when offline	Int				NoUnits	ReadWrite
5113	1	PwrLimOffDT	Offline delay	Int	120	15	300	Seconds	ReadWrite
5114	1	NightEndHr	Night Mode End Hour	Int	7	0	23	NoUnits	ReadWrite
5115	1	NightEndMin	Night Mode End Minute	Int	0	0	59	NoUnits	ReadWrite
5116	1	NightStartHr	Night Mode Start Hour	Int	20	0	23	NoUnits	ReadWrite
5117	1	NightStartMin	Night Mode Start Minute	Int	0	0	59	NoUnits	ReadWrite
5119	1	PmpStageDT	Pump Stage Delay Time to compressor	Int	5	0	99	Seconds	ReadWrite
5120	1	PmpStageOffDT	Pump Stage Off Delay Time	Int	60	0	999	Seconds	ReadWrite
5121	1	PmpBStageOffDT	Pump B Stage delay after Pump A	Int	30	0	999	Seconds	ReadWrite
5122	1	Pmp_Pulse	Variable Speed Pump Pulse duration on start	Int	5	0	30	Seconds	ReadWrite
5123	1	Blackout_DT	Delay time start up after blackout	Int	20	10	60	Seconds	ReadWrite
5124	1	CtrlSenSel	Controlling Sensor Selection	Int	0	0	CtrlSenSel Limit	NoUnits	ReadWrite

Index	Size	Variable Name	Variable Description	Data Type	Default Value	Min	Max	UoM	Direction
5125	1	PoolPrbSel	Pool probe selection	Int	0	0	PriorityPrbMax	NoUnits	ReadWrite
5126	1	CompStart_DT	Delay after Compressor request is sent to Safety block	Int	0	0	120	Seconds	ReadWrite
5127	1	HeatLPLOCKDT	LP lock out delay for Hesat Start	Int	180	5	600	Seconds	ReadWrite
5128	1	ElectrCompNo	Percentage of compressors in AL to force Electric	Int	50	0	100	NoUnits	ReadWrite
5129	1	BoostAct_DT	Active Boost Delay Time	Int	5	0	99	Minutes	ReadWrite
5130	1	PoolSpaPriority	0 = off; 1 = pool priority; 2 = spa priority;	Byte	0	0	2	NoUnits	ReadWrite
5131	1	PoolChgOver	Pool change over time	Int	30	15	300	Minutes	ReadWrite
5132	1	SpaChgOver	Spa change over time	Int	30	15	300	Minutes	ReadWrite
5136	1	UnitStatus	Unit status	UInt		0	9	NoUnits	ReadWrite
5141	1	PmpHRCnt	Pump hour run count	UInt				Hours	Read
5142	1	PmpBHRCnt	Pump B hour run count	UInt				Hours	Read
5143	1	Comp1HRCnt	Compressor 1 Hour run count	UInt				Hours	Read
5144	1	Comp2HRCnt	Compressor 2 Hour run count	UInt				Hours	Read
5145	1	Comp3HRCnt	Compressor 3 Hour run count	UInt				Hours	Read
5146	1	Comp4HRCnt	Compressor 4 Hour run count	UInt				Hours	Read
5147	1	Comp5HRCnt	Compressor 5 Hour run count	UInt				Hours	Read
5148	1	Comp6HRCnt	Compressor 6 Hour run count	UInt				Hours	Read
5149	1	OdoorFan1HRCnt	Outdoor fan 1 Hour run count	UInt				Hours	Read
5150	1	OdoorFan2HRCnt	Outdoor fan 2 Hour run count	UInt				Hours	Read
5151	1	OdoorFan3HRCnt	Outdoor fan 3 Hour run count	UInt				Hours	Read
5152	1	OdoorFan4HRCnt	Outdoor fan 4 Hour run count	UInt				Hours	Read
5153	1	OdoorFan5HRCnt	Outdoor fan 5 Hour run count	UInt				NoUnits	Read
5154	1	OdoorFan6HRCnt	Outdoor fan 6 Hour run count	UInt				NoUnits	Read
5155	1	PmpHRCntThrsh	Pump hour run count threshold	UInt	10000	0	65000	Hours	ReadWrite
5156	1	PmpBHRCntThrsh	Pump B hour run count threshold	UInt	10000	0	65000	Hours	ReadWrite
5157	1	Comp1HRCntThrsh	Compressor 1 Hour run threshold	UInt	10000	0	65000	Hours	ReadWrite
5158	1	Comp2HRCntThrsh	Compressor 2 Hour run threshold	UInt	10000	0	65000	Hours	ReadWrite
5159	1	Comp3HRCntThrsh	Compressor 3 Hour run threshold	UInt	10000	0	65000	Hours	ReadWrite
5160	1	Comp4HRCntThrsh	Compressor 4 Hour run threshold	UInt	10000	0	65000	Hours	ReadWrite
5161	1	Comp5HRCntThrsh	Compressor 5 Hour run threshold	UInt	10000	0	65000	Hours	ReadWrite
5162	1	Comp6HRCntThrsh	Compressor 6 Hour run threshold	UInt	10000	0	65000	Hours	ReadWrite
5163	1	OdoorFan1HRCntThrsh	Outdoor fan 1 Hour run threshold	UInt	10000	0	65000	Hours	ReadWrite
5164	1	OdoorFan2HRCntThrsh	Outdoor fan 2 Hour run threshold	UInt	10000	0	65000	Hours	ReadWrite
5165	1	OdoorFan2HRCntThrsh	Outdoor fan 2 Hour run threshold	UInt	10000	0	65000	Hours	ReadWrite
5167	1	OdoorFan5HRCntThrsh	Outdoor fan 5 Hour run threshold	UInt	10000	0	65000	NoUnits	ReadWrite
5168	1	OdoorFan6HRCntThrsh	Outdoor fan 6 Hour run threshold	UInt	10000	0	65000	NoUnits	ReadWrite
5169	1	Frost_DT	Frost Activation delay	Int	5	0	99	Minutes	ReadWrite

Index	Size	Variable Name	Variable Description	Data Type	Default Value	Min	Max	UoM	Direction
5170	1	De_Ice_Init_time	de-ice initialisation cumulative time	Int	5	0	99	Minutes	ReadWrite
5171	1	de_ice_DT_MinRub	Comp min run time before defrost	Int	20	0	999	Minutes	ReadWrite
5172	1	De_Ice_Max	Maximum duration of a de-ice cycle	Int	15	0	999	Minutes	ReadWrite
5173	1	De_Ice_DT_OnOn	Delay between 2 consecutive de-ice cycles	Int	30	0	999	Minutes	ReadWrite
5174	1	De_Ice_DeW	Fan only coil de-water Delay Time	Int	30	0	999	Seconds	ReadWrite
5175	1	De_IceLPLOCKDT	LP lock out delay after De Ice finish	Int	300	5	600	Seconds	ReadWrite
5176	1	PmpMinOn	Pump Minimum on time (hot side)	Int	300	0	999	Seconds	ReadWrite
5177	1	Pmp_Run_On	Pump run on time delay (hot side)	Int	180	0	999	Seconds	ReadWrite
5178	1	BMS_PumpSpeedFit	Speed the pump will run if leaving water control enabled and LWT probe fault	Int				NoUnits	ReadWrite
5179	1	PmpCycleT	Pump cycle time for temperature testinf (0.5 hour increments)	Int	4	1	10	Hours	ReadWrite
5180	1	PmpBMinOn	Pump Minimum on time (cold side)	Int	300	0	999	Seconds	ReadWrite
5181	1	PmpB_Run_On	Pump run on time delay (cold side)	Int	180	0	999	Seconds	ReadWrite
5182	1	PmpBStageDT	Pump (cold side) Stage Delay Time to Pump (hot side)	Int	10	0	99	Seconds	ReadWrite
5183	1	Flw_Recheck	Time delay for Flow Re Checking	Int	180	0	999	Seconds	ReadWrite
5184	1	Flw_Proof_DT	Flow Proof Delay	Int	30	0	30	Seconds	ReadWrite
5185	1	FlwDT_Off	Off delay when flow switch used for on/off	Int	2	1	6	Seconds	ReadWrite

To Turn Off The Water Heater

If it is necessary to turn off the water heater on completion of the installation, such as on a building site or where the premises are vacant, then:

- Switch off the electrical supply at the isolating switch to the water heater.
- Close the cold water isolation valve at the inlet to the system.

DRAINING THE WATER HEATER

To drain the water heater:

- Turn off the water heater (refer to [“To Turn Off The Water Heater”](#) on **page 77**).
- Close all hot water taps.
- Operate the relief valve release lever on one of the storage tanks - do not let the lever snap back or you will damage the valve seat.

Operating the lever will release the pressure in the water heater.

- Close the isolation valves at the inlet and outlet of the water heater and place a bucket under the cold water inlet.
- Undo the unions at the inlet and outlet of the water heater. The heat pump heat exchanger holds 5 to 10 litres of water (model dependent) and will drain into the bucket.

TROUBLE SHOOTING

- **Heat Pump Won't Start**

A delay of up to 20 minutes to 2 hours can be experienced before heat pump starts operating

- **Incorrect Phase Rotation**

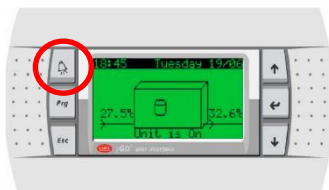


PHASE
DETECT
RELAY



The phase detect relay will open circuit if the heat pump has been wired with incorrect phase rotation or if a phase has failed. Both green and yellow LEDs on the relay will be illuminated if phase rotation is correct.

- **Alarm light on heat pump controller**



If the alarm light is flashing RED, check the alarm by pressing the alarm button. Phone your nearest Rheem Service Department or Accredited Service Agent (or Service Centre in NZ) to inform about the alarm.

- **Activation of Freeze Protection**

Check the control panel of the heat pump. Read the error message/ warning if it shows on the display.

- **Heat pump starts then turns off soon after**

This could be caused by:

- a. Insufficient water flow rate through heat exchanger. Check pipe sizing per chart, check obstructions, check lines and pump are bled, check pump is operating, check temperature rise across inlet and outlet.

Note: Tanks and heat pumps are to be manifolded in Equa-Flow. It is important that the branches to each storage tank **ONLY** contain a gate or ball valve and union. Fitting of loose jumper valves, non-return valves or pressure limiting valves in the branches or primary flow and return lines between the heat pump and tanks **WILL** affect performance of the heat pump.

- b. Refrigerant charge too high? Refer to Alarm.
- c. Refrigerant charge too low? Refer to Alarm.

Turn heat pump off then on again at isolating switch to reset system.

- **Heat pump compressor excessively noisy**

Check for correct phase rotation (refer to **page 92**).

This page is intentionally blank

This page is intentionally blank

