

STORAGE TANKS

Market-leading storage tanks from small to large.



CASE STUDY

**AUSTRALIAN NATIONAL UNIVERSITY
CANBERRA, ACT**

Challenge

Union Court Canberra is a new environmentally sustainable student accommodation precinct for 450 students.

Rheem Commercial Air to Water Heat Pumps helped solve the spatial issues by allowing double stacking of 8 x 16 kW horizontal discharge units for the main plant.

Hot Water Solution

The bottom flange of RT Stainless Steel storage tanks were fitted with auxiliary

electric Heating Units providing back-up during low atmospheric temperature intervals. A "soft start" electrical set-up was employed to stage the auxiliary heating units to eliminate sudden electrical load.

Across the entire precinct, Rheem supplied:

- 11 x Rheem 16kW Air to Water (A2W) Commercial Heat Pumps
- 6 x Rheem 2000L RT-Series Storage Tanks with in-tank 30 kW Heating Unit bundles
- 4 x Rheem 1000L RT-Series Storage Tanks with in-tank 15 kW Heating Unit bundles



RHEEM 610 SERIES

SUITED TO INTEGRATION WITH ALMOST ANY SYSTEM



STORAGE



LARGER ANODE



HIGH FLOW CONNECTION



NO PRESSURE DROP

The work-horse storage system that keeps on working, in a wider range of water quality environments.

FLEXIBLE

Compatible with CFWH, Raypak, solar preheat and heat pump storage or as additional storage for a Rheem gas or electric hot water system.

HIGHLY DURABLE IN POOR WATER QUALITY AREAS

Manufactured with commercial grade vitreous enamel and larger anode.

STABLE PRESSURE

No coils means there's virtually no pressure drop.

MORE KEY FEATURES

- Suitable for up to 82°C for sanitising applications
- Range of sizes
- 50mm high flow water connections
- Ease of fitment and replacement

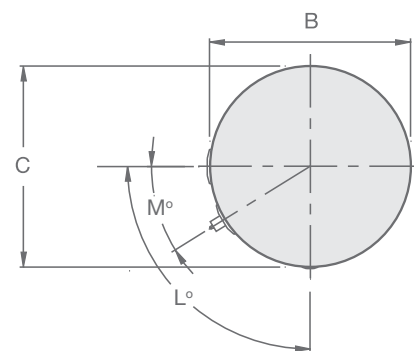
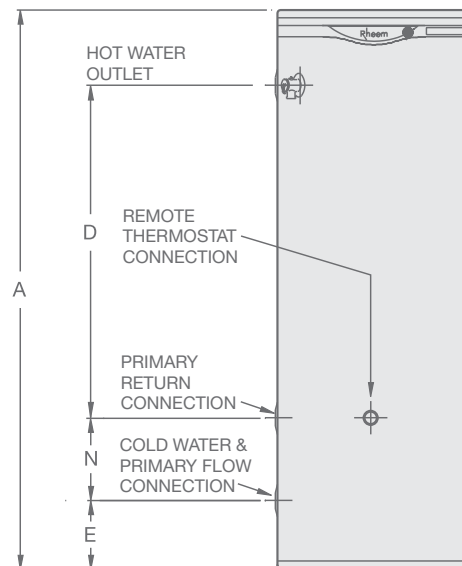


*For full terms and conditions contact Rheem or visit www.rheem.com.au/warranty

TECHNICAL DATA

DIMENSIONS AND TECHNICAL DATA TABLE				
Model number			610 340	610 430
			Vitreous Enamel	
Storage capacity		Litres	325	410
Dimensions	A	mm	1640	1840
	B	mm	640	685
	C	mm	640	685
	D	mm	1008	1210
	E	mm	115	108
	L	°	90°	84°
	M	°	32°	30°
	N	mm	290	273
Weight Empty		kg	96	117
Inlet/Outlet Connections (BSPF)			RP2	RP2
T&PR Valve Connection (BSPF)			RP $\frac{3}{4}$	RP $\frac{3}{4}$
Remote Thermostat Connection (1 x thermowell supplied)			RP $\frac{1}{2}$	RP $\frac{1}{2}$
T&PR Valve Setting		kPa	1000	1000
Expansion Control Valve (ECV) ¹ Setting		kPa	850	850
Maximum Water Supply Pressure				
without ECV ¹ fitted		kPa	800	800
with ECV ¹ fitted		kPa	680	680
Maximum Stored Water Temperature		°C	82	82
Manifold – Min. Centre to Centre		mm	890	935
Maintenance Rate		kWH/day	3.1	4.3

¹ Expansion control valve not supplied with the water heater.



RHEEM RT SERIES

SUITED TO LARGE COMMERCIAL APPLICATIONS



STORAGE



EASY TO INSTALL



HIGH PRESSURE



UP TO 5,000L CAPACITY



SUPERIOR INSULATION

The high pressure, high capacity storage tank.

HIGH PRESSURE

Carbon steel tanks suit 500kPa operation and stainless steel tanks suit up to 850kPa operation. That's up to 20% more operating pressure than competitor tanks of an equivalent size.

HIGH CAPACITY

Available in nominal 1000, 2000, 3000, 4000, 5000L capacities. Multiple tanks of the same capacity can be manifolded in parallel to store larger volumes for reduced footprint and installation flexibility.

EASY TO INSTALL

The only large capacity tank to fit through a single door, the RT1000 tank is just 800mm and can be easily installed in replacement situations. Models up to RT4000 tank fits easily through a double 1400mm door.

HIGH PERFORMANCE INSULATION

100mm polypropylene insulation, with a bonded aluminium cladding suitable for outdoor installation. Polypropylene insulation is fireproof, resistant and resistant to rot, moisture, mould, bacteria and rodents, hypoallergenic, 100% recyclable, light weight and self-supporting.

WITHSTANDS HIGH TEMPERATURES

Can store water up to 90°C.

MORE KEY FEATURES

- Available in a fully welded carbon steel cylinder for indirect applications, or 316L stainless steel for direct water applications
- Flange plates and a variety of high flow 50mm water fittings allow for different auxiliary options such as heat exchange coils (not supplied), electric heating unit bundles, heat pumps, gas water heaters, solar or waste heat
- 4 x sensor well ports provided to suit installation
- 1 x sensor well supplied
- Additional sensor wells may be required, application dependent



ACCESSORY

Additional Temperature Sensor Well

079438

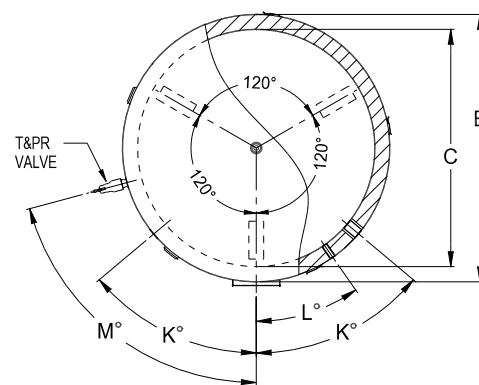
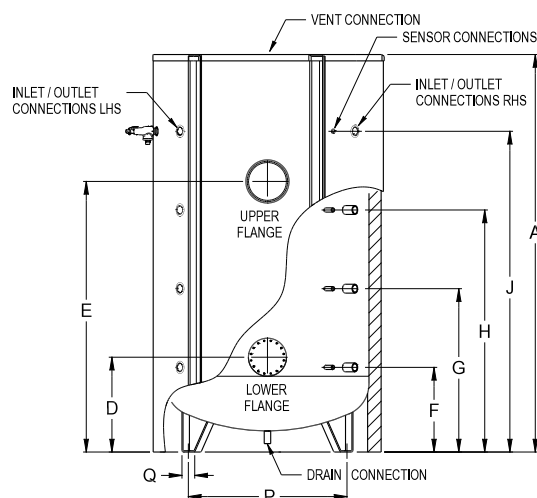


*For full terms and conditions contact Rheem or visit www.rheem.com.au/warranty

TECHNICAL DATA

DIMENSIONS AND TECHNICAL DATA TABLE							
Model number		RT1000	RT2000	RT3000	RT4000	RT5000	
		Stainless steel / Carbon steel					
Storage capacity	Litres	920	2055	2960	3820	5180	
Dimensions	A	mm	2200	2565	2845	2918	3128
	B	mm	1000	1300	1450	1600	1800
	C	mm	800	1100	1250	1400	1600
	D	mm	510	555	600	628	747
	E	mm	1435	1735	1945	1963	2132
	F	mm	417	462	505	533	667
	G	mm	879	1024	1135	1163	1287
	H	mm	1341	1586	1765	1793	1907
	J	mm	1803	2148	2395	2423	2527
	P	mm	685	988	1140	1290	1378
	Q	mm	80	100	100	100	100
	K	°	50	50	50	50	50
	L	°	35	35	35	35	35
M	°	75	75	75	75	75	
Weight Empty	kg	136/115	245/245	330/334	455/455	660/535	
Inlet/Outlet Connections (BSPF)		RP2	RP2	RP2	RP2	RP2	
T&PR Valve Outlet Connection (BSPF)		RP1¼	RP1¼	RP1¼	RP1¼	RP1¼	
Vent Connection (BSPF)		RP1½	RP2	RP2	RP2	RP2	
Drain Connection (BSPF)		RP1¼	RP1¼	RP1¼	RP1¼	RP1¼	
Remote Thermostat Connection (1 x thermowell supplied)		RP½	RP½	RP½	RP½	RP½	
T&PR Valve Setting (stainless steel/carbon steel)	kPa	850/500	850/500	850/500	850/500	850/500	
Expansion Control Valve (ECV) ¹ Setting (stainless steel/carbon steel)	kPa	700/NA	700/NA	700/NA	700/NA	700/NA	
Maximum Water Supply Pressure							
without ECV ¹ fitted (stainless steel/carbon steel)	kPa	680/400	680/400	680/400	680/400	680/400	
with ECV ¹ fitted (stainless steel/carbon steel)	kPa	550/NA	550/NA	550/NA	550/NA	550/NA	
Maximum Stored Water Temperature	°C	90	90	90	90	90	
Manifold – Min. Centre to Centre (piping one side)	mm	1350	1550	1700	1850	2050	
Manifold – Min. Centre to Centre (piping both sides)	mm	1500	1700	1850	2000	2200	
Maintenance Rate	kWH/day	8.5	10.8	12.3	13.5	15.3	

¹ Expansion control valve not supplied with the water heater.



WATER CAPACITY ABOVE NOMINATED FITTING (Litre)						
Model number		RT1000	RT2000	RT3000	RT4000	RT5000
Storage Capacity (L)		920	2055	2960	3820	5180
Fitting	J	116	235	309	438	695
Fitting	H	345	763	1082	1408	1942
Fitting	G	575	1292	1855	2377	3188
Fitting	F	804	1820	2628	3347	4435
Upper Flange	E	299	623	861	1146	1489
Lower Flange	D	758	1732	2511	3201	4274