

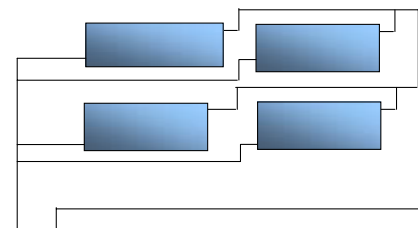
Commercial Solar Pipe Size / Pump Selection / Speed Setting																
Total Number Collectors	Combined Tank & Array Piping Length (m)*	Total Length (flow and return) Between Storage Tanks and Collector Array (m)**														
		10	20	30	40	50	60	70	80	90	100	150	200			
15	30	DN20/20-60/1		DN20/20-60/2						DN20/20-60/3		DN20/32-80/2	DN20/32-80/3			
		DN25/20-60/1												DN25/20-60/2		
30	53+	DN25/20-45						-	-	-	-	-	-			
		DN25/20-60/2		DN25/20-60/3						DN25/32-80/2		DN32/20-60/2				
	53++	DN25/20-45						-	-	-	-	-	-			
DN25/20-60/2		DN25/20-60/3						DN25/32-80/2		DN32/20-60/2						
45	63+	-	DN25/32-80/3						-	-	-	-	-			
		DN32/20-45												DN32/20-60/3	DN32/20-60/3	
45	90++	-	DN32/20-45						DN32/20-60/3						DN32/32-80/3	
		-	DN32/32-80/3						DN40/20-45						DN40/20-60/3	DN40/32-80/3
60	79+	-	DN32/32-80/3						DN40/20-45						DN40/20-60/3	DN40/32-80/3
		-	DN32/32-80/3						DN40/20-45						DN40/20-60/3	DN40/32-80/3
75	92+	-	-	DN40/20-60/3	DN40/32-80/3									-	-	
		DN50/20-45												-		
75	111++	-	-	DN40/32-80/3									-	-		
		DN50/20-45												-		
90	105+	-	-	DN40/32-80/3						DN50/20-60/3		-	-			
		DN50/20-60/3												DN50/32-80/2	DN50/32-80/2	
90	159++	-	-	DN40/32-80/3	-	-	-	-	-	-	-	-	-			
		DN50/20-60/3												DN50/32-80/2	DN50/32-80/3	
105	118+	-	-	-	DN50/32-80/3									-	-	
		-	-	-	DN50/32-80/3									-	-	
120	131+	-	-	-	DN50/32-80/3									-	-	
		-	-	-	DN50/32-80/3									-	-	

\* total length of pipe inter-connecting tanks and collector arrays

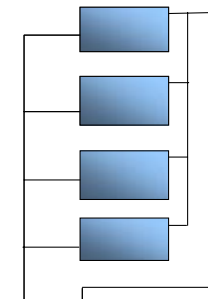
\*\* lineal length.

Notes:

1. UPS20-60B set to speed 3 can be substituted for a UP20-45, but not the reverse
2. If actual number of panels falls between an array size, use the next biggest array
3. If actual pipe length between tanks and collectors falls between the lengths shown, use the next longest length



\*\*Side by Side Array



\*Parallel Array



Rheem Australia Pty Ltd ABN 21 098 823 511