

**SERVICE CONNECTIONS PROVIDED:**

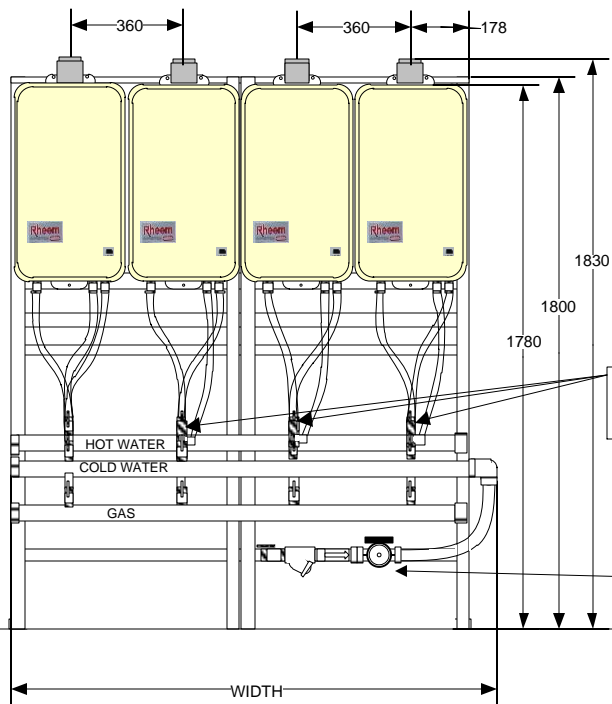
- (1) HOT WATER OUTLET  
40MM BSPT-MALE
- (2) COLD WATER INLET  
40MM BSPT-MALE
- (3) NATURAL GAS/LPG INLET  
40MM BSPT-MALE
- (4) SECONDARY HOT WATER RETURN (OPTIONAL)  
25MM BSP FEMALE

240V/1PH/50HZ  
POWER SUPPLY TO INDIVIDUAL WATER HEATERS &  
OPTIONAL CIRCULATING PUMP BY OTHERS

**NOTES:**

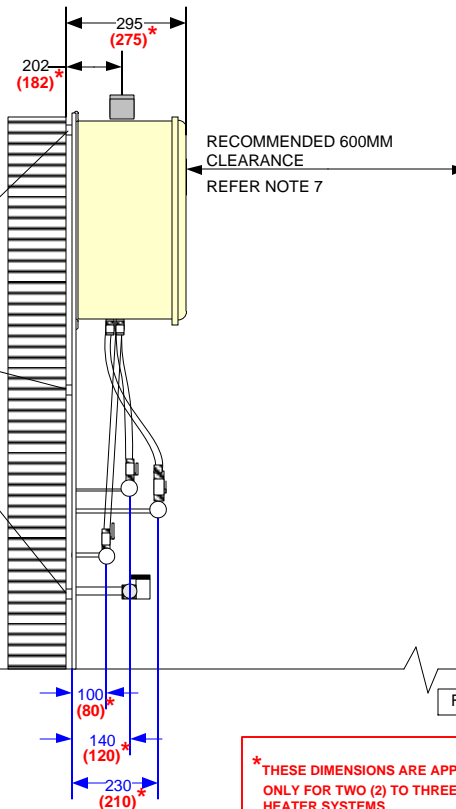
1. OPTIONAL : HOT WATER RETURN CIRCULATION PUMP & ASSEMBLY.
2. EACH WATER HEATER REQUIRES A 240VAC GENERAL PURPOSE POWER OUTLET.  
NOTE: OPTIONAL RETURN CIRCULATION PUMP (WHEN FITTED) IS TO BE AUTOMATICALLY SWITCHED OFF A MINIMUM OF FOUR (4) TIMES PER EACH DAY, WITH A MINIMUM OFF PERIOD OF FIVE (5) MINUTES.  
SUPPLY & INSTALLATION OF 240VAC POWER IS BY OTHERS & SHALL BE IN ACCORDANCE TO AS/NZS3000
3. NATURAL GAS/LPG SUPPLY & ALL PLUMBING THEREOF IS BY OTHERS & SHALL BE IN ACCORDANCE TO AS5601
4. WATER SUPPLY TO & FROM & ALL PLUMBING THEREOF IS BY OTHERS & SHALL BE IN ACCORDANCE TO AS3500
5. ALL DIMENSIONS ARE IN MM UNLESS OTHERWISE STATED.
6. HOT WATER SYSTEM IS SUITABLE FOR INTERNAL INSTALLATION ONLY.
7. SPACING: RECOMMENDED 600MM CLEARANCE FROM THE FRONT OF THE HEATER.  
REFER AS5601-2004 FIG 5.3 FOR MANDATORY REQUIREMENTS.
8. SERVICE CONNECTION SIDE IS USER SELECTABLE.
9. REFER TO SPECIFICATIONS, INSTALLATION AND OPERATING INSTRUCTION MANUAL FOR ADDITIONAL DETAILS.
10. DRAWING SUBJECT TO CHANGE WITHOUT NOTICE.

**FRONT VIEW**

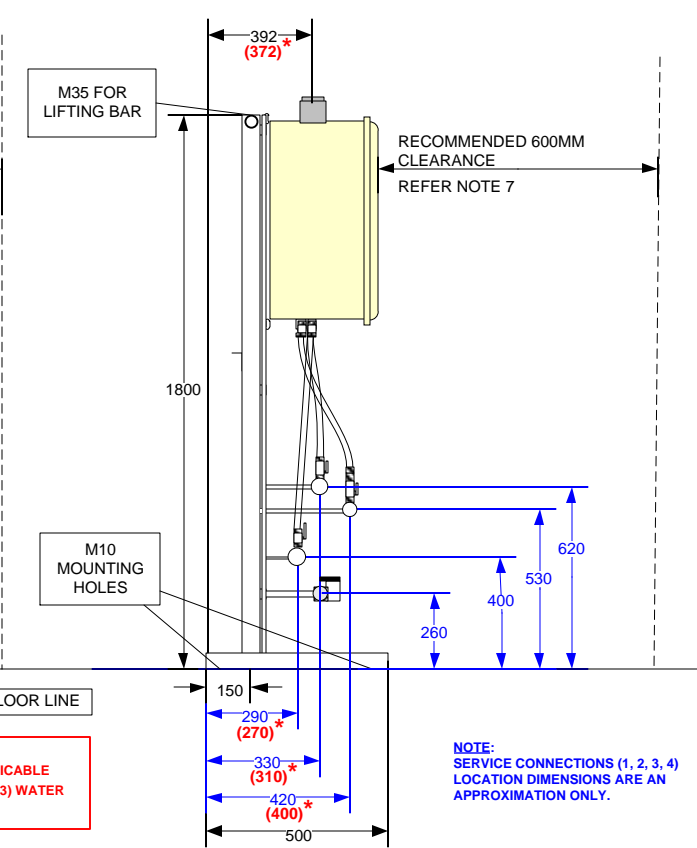


MODEL	MPI02	MPI03	MPI04	MPI05	MPI06
WIDTH	820	1180	1540	1900	2260

**SIDE VIEW WALL MOUNTING (STANDARD)**



**SIDE VIEW FLOOR MOUNTING (OPTIONAL)**



\*THESE DIMENSIONS ARE APPLICABLE ONLY FOR TWO (2) TO THREE (3) WATER HEATER SYSTEMS.

NOTE: SERVICE CONNECTIONS (1, 2, 3, 4) LOCATION DIMENSIONS ARE AN APPROXIMATION ONLY.

No	DATE	REVISION	BY	CHECKED
0	11/11	ORIGINAL ISSUE	SL	RH

Rheem Australia Pty Ltd  
1 Alan Street  
Rydalmere NSW 2116  
Email : [commercialsales@rheem.com.au](mailto:commercialsales@rheem.com.au)  
[www.rheem.com.au](http://www.rheem.com.au)

Description: Rheem Multipak – MPI02 – MPI06 Commercial Mains Pressure Internal Hot Water System					
Designed RH	Drawn SL	Date 16/11/11	Scale N.T.S	Drawing No: MPI	Revision 0