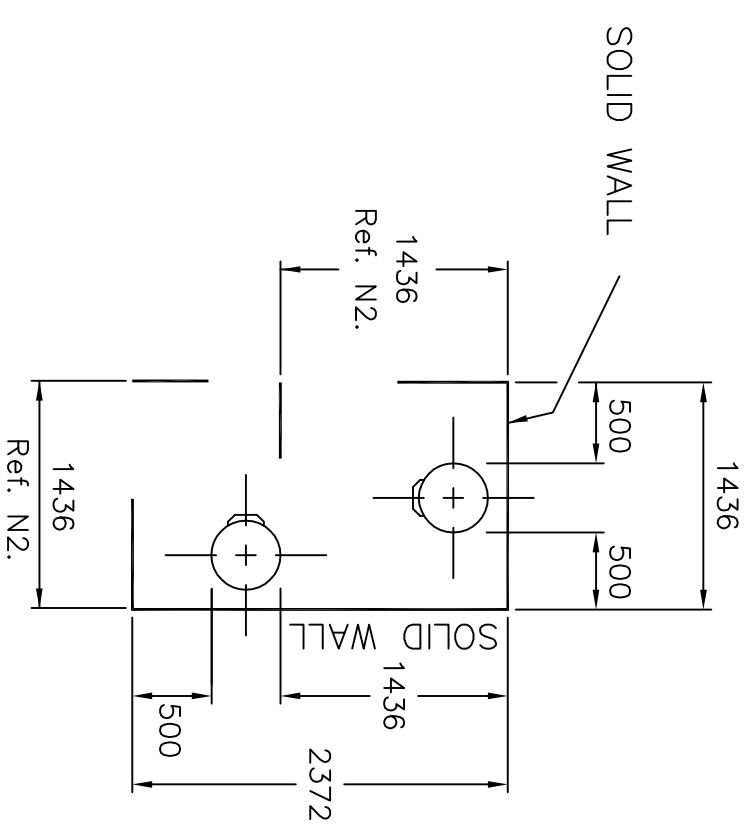
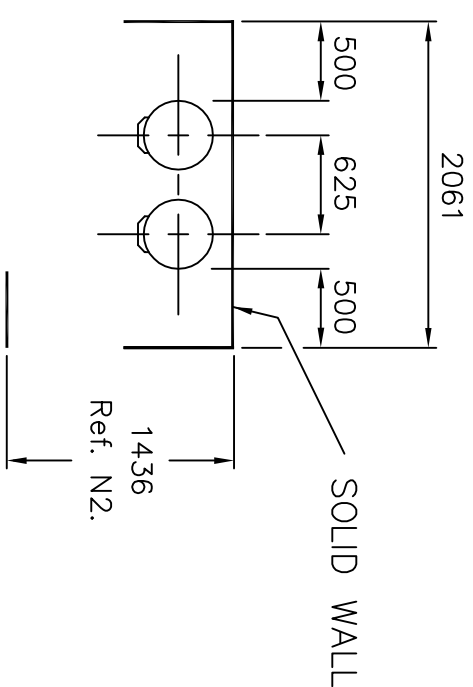
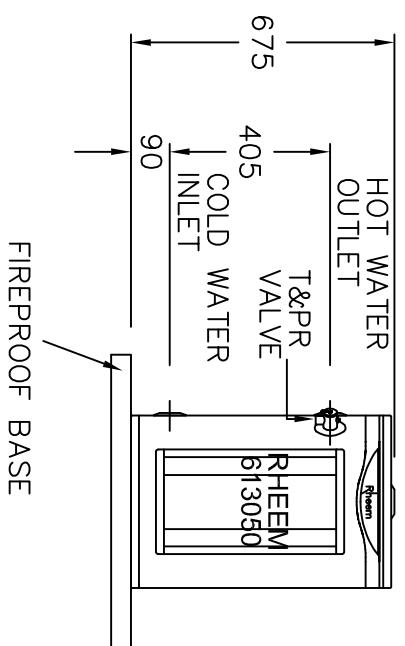
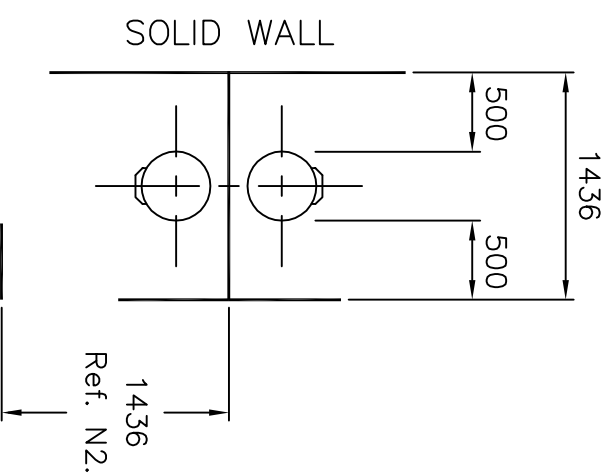
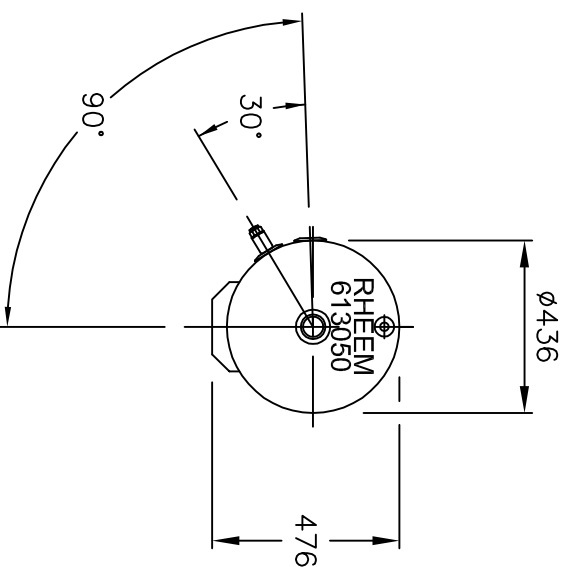


INDOOR AND
OUTDOOR MODEL



613050 x 2 12/10 REV-BD (A3)



- LEGEND**
- ⊥ STOP COCK
 - ⊘ NON RETURN VALVE
 - ⊠ PRESSURE LIMITING VALVE (IF REQUIRED)
 - ⊞ COLD WATER RELIEF VALVE
 - ⊞ GATE VALVE
 - ⊞ CIRCULATOR
 - ⊞ FIXTURES
 - DIRECTION OF FLOW
 - ≡ UNION
 - Y TUNDISH

NOTES:

- N1. MINIMUM SPACE BETWEEN WALL AND BACK OF WATER HEATER IS MM.
- N2. A MINIMUM OF 900mm SHOULD BE LEFT IN FRONT OF THE WATER HEATER FOR ACCESS, SERVICING AND WATER HEATER REMOVAL.
- N3. EXTERNAL WATER HEATERS MUST BE INSTALLED WITH THE BACK OF THE WATER HEATER AGAINST A SOLID WALL.

INLET OUTLET CONNECTIONS:-

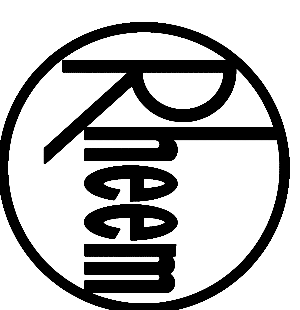
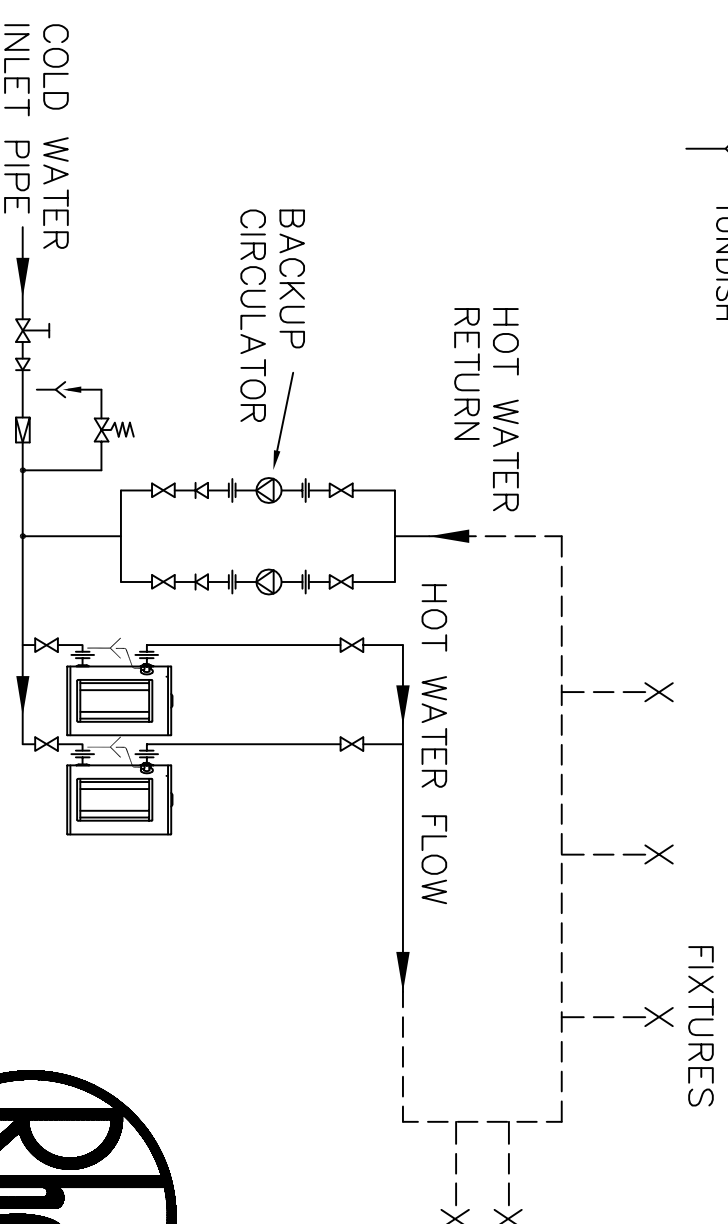
RP 1 1/4 / 32

T&PR VALVE CONNECTIONS:-

RP 3/4 / 20

T&PR VALVE SETTING:-

1000 kPa



RHEEM WATER HEATERS HEAVY DUTY ELECTRIC 2 X 613050